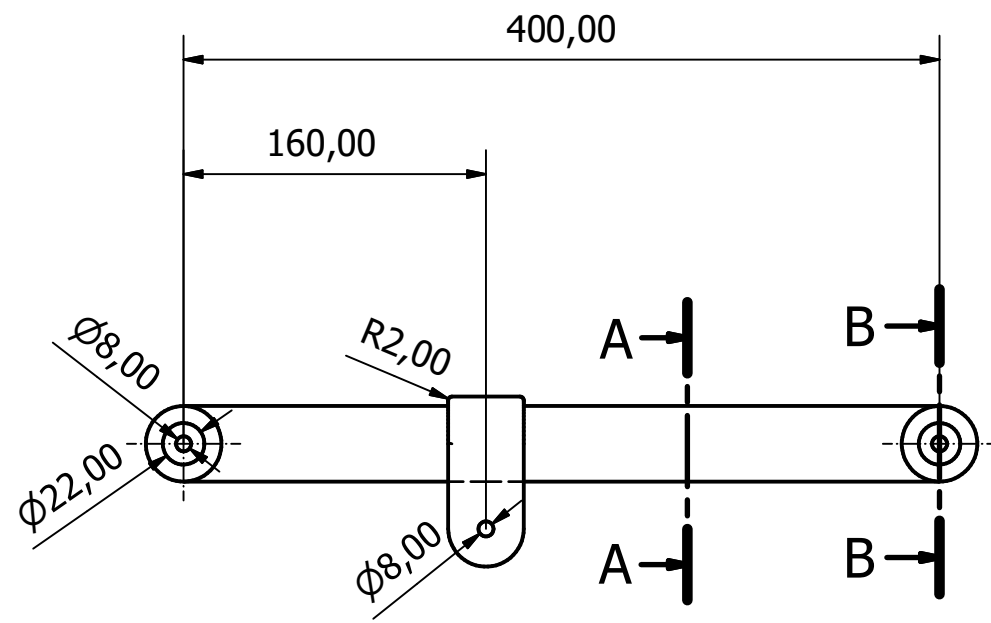
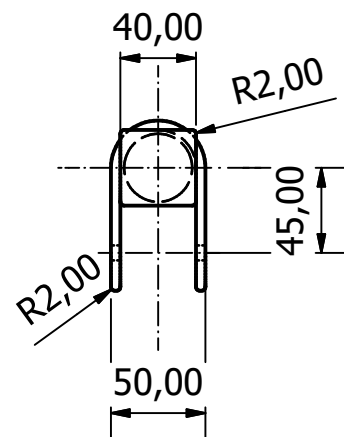
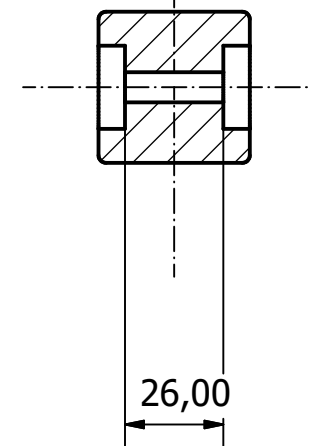
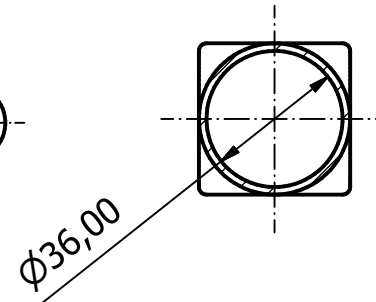


3



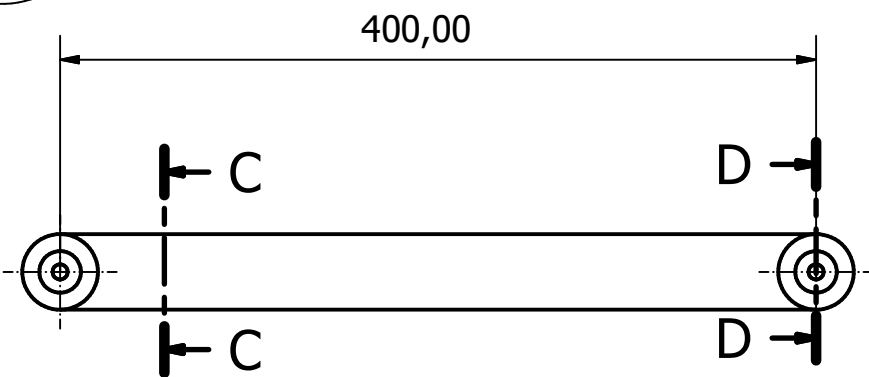
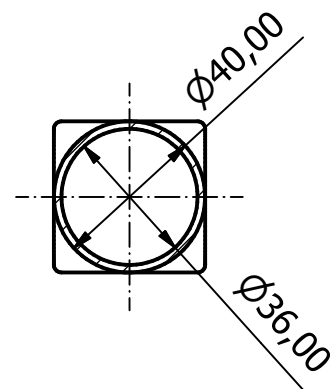
A-A (1:2)

B-B (1:2)

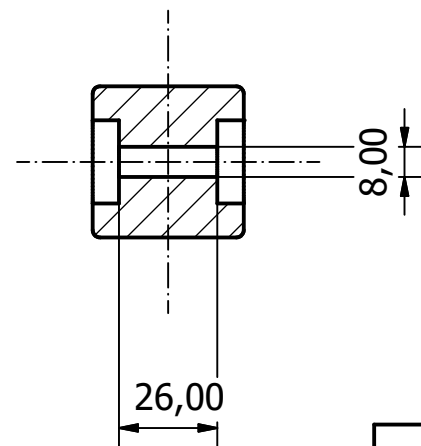


2

C-C (1:2)



D-D (1:2)



2	ESLABÓN 3	3	ACERO AISI 316
2	ESLABÓN 2	2	ACERO AISI 316
Nº PIEZAS	DENOMINACIÓN	MARCA	MATERIAL
Fecha	25/06/2019	ESCUELA DE INGENIERÍAS INDUSTRIALES	
MÁQUINA BIOSALUDABLE DE DOBLE PECTORAL HORIZONTAL		UNIVERSIDAD DE VALLADOLID	
		Diseño de MARCOS MENCÍA GRIJALVO	Escala 1:4 Hoja 4 / 7