



Can mixed forests sequester more CO₂ than pure forests in future climate scenarios? A case study of *Pinus sylvestris* combinations in Spain

Diego Rodríguez de Prado¹ · Aitor Vázquez Veloso^{1,2} · Yun Fan Quian^{1,3} · Irene Ruano^{1,2} · Felipe Bravo^{1,2} · Celia Herrero de Aza¹

Received: 19 July 2022 / Revised: 15 September 2022 / Accepted: 29 September 2022

© The Author(s) 2022

Abstract

Adapting forests to climate change is a critical issue for forest management. It requires an understanding of climate effects on forest systems and the ability to forecast how these effects may change over time. We used Spanish Second National Forest Inventory data and the SIMANFOR platform to simulate the evolution of CO₂ stock (CO₂ Mg · ha⁻¹) and accumulation rates (CO₂ Mg · ha⁻¹ · year⁻¹) for the 2000–2100 period in pure and mixed stands managed under different Shared Socioeconomic Pathways (SSPs) in Spain. We hypothesized that (1) the more optimistic climate scenarios (SSP1 > > SSP5) would have higher CO₂ stock and accumulation rates; (2) mixed stands would have higher CO₂ stock and accumulation rates than pure stands; and (3) the behavior of both variables would vary based on forest composition (conifer–conifer vs. conifer–broadleaf). We focused on *Pinus sylvestris* L., and its main mixtures with *Pinus nigra*, *Pinus pinaster*, *Fagus sylvatica* and *Quercus pyrenaica*. The SSP scenarios had correlating CO₂ stock values in which SSP1 > SSP2 > SSP3 > SSP5, ranging from the most optimistic (SSP1) to the most pessimistic (SSP5). Though pure stands had higher CO₂ stock at the beginning, differences with regard to mixed stands were drastically reduced at the end of the simulation period. We also found an increase in the aboveground CO₂ proportion compared to belowground in conifer–broadleaf mixtures, while the opposite trend occurred in conifer–conifer mixtures. Overall CO₂ accumulation rates decreased significantly from the beginning to the end of the simulation period, but our results indicated that this decline would be less drastic in mixed stands than in pure ones. At the end of the simulation period, CO₂ accumulation rates were higher in mixed stands than in pure stands for all mixtures, fractions (aboveground and belowground) and SSPs. Knowing the evolution of mixed forests in different climate scenarios is relevant for developing useful silvicultural guidelines in the Mediterranean region and optimizing forestry adaptation strategies. Better understanding can also inform the design of management measures for transitioning from pure stands to more resource efficient, resistant and resilient mixed stands, in efforts to reduce forest vulnerability in the face of climate change. This work highlights the importance and benefits of mixed stands in terms of CO₂ accumulation, stand productivity and species diversity.

Keywords Mixed forests · Simulations · Climate change · Shared Socioeconomic Pathways · Forest management

Diego Rodríguez de Prado and Aitor Vázquez Veloso have contributed equally to this work.

Communicated by Peter Biber.

✉ Diego Rodríguez de Prado
diego.rodriguezdeprado@gmail.com

Extended author information available on the last page of the article

Introduction

Global warming is altering environmental conditions around the world. In many landscapes, droughts are expected to increase in frequency and intensity, and new extreme climate events are predicted (Allen 2019). Changes in forest productivity and species distribution have also been reported (Fernandez-de-Una et al. 2015). In light of such prospects, identifying abiotic factors that can limit growth and quantifying local-scale productivity changes make it possible to develop site productivity gradients (Toïgo et al. 2015) as a

starting point for creating management guidelines. Previous studies have indicated that climate change effects are expected to be harsher in the Mediterranean region (Astigarraga et al. 2020; Martín-Benito et al. 2010). However, Mediterranean species have a wide range of water-use strategies that could play a key role in coping with more extreme conditions. Similarly, complementary mechanisms for water use in mixed forests can enhance forest resilience to extreme drought episodes (Muñoz-Gálvez et al. 2021). In recent decades, these adaptive capabilities have attracted the attention of researchers and managers (Condés et al. 2018; Del Río et al. 2016), some of whom have proposed mixed forests as an option for mitigating the effects of climate change (Toïgo et al. 2015). Research on mixed forests vs monocultures has found that mixed forests provide greater stability (Muñoz-Gálvez et al. 2021) and even higher productivity (Forrester 2014; Pretzsch 2009; Pretzsch and Schütze 2016) due complementary (Toïgo et al. 2015; Pretzsch and Schütze 2016; Del Río et al. 2017; Riofrío et al. 2017a, b) and more efficient use of resources (Pretzsch 2014; Pretzsch and Schütze 2016; Riofrío et al. 2017a, b). In addition, mixed stands have been reported to have greater resilience and resistance to biotic and abiotic disturbances compared to pure stands (Del Río et al. 2009, 2017; Pardos et al. 2021).

Scots pine (*Pinus sylvestris*) is the most widespread *Pinus* species, covering 10,000 km longitudinally from Spain to Russia (Krakau et al. 2013). There are approximately 1 000 000 ha of pure stands in Spain alone (del Río et al. 2009). This species has great commercial and ecological importance and has been studied extensively in Europe (Krakau et al. 2013). It grows throughout the continent (Durrant et al. 2016; Pretzsch et al. 2020) and into the Mediterranean area, which marks the limit of its natural distribution (Fernandez-de-Una et al. 2015). Although Scots pine often grows in natural and forested pure stands (Durrant et al. 2016), it can be found in mixed stands with diverse coniferous and broadleaf species. In this study, we focused on four different mixtures (*Pinus sylvestris* – *Pinus nigra*, *Pinus sylvestris* – *Pinus pinaster*, *Pinus sylvestris* – *Fagus sylvatica* and *Pinus sylvestris* – *Quercus pyrenaica*) to simulate CO₂ stock and accumulation rates under different climate scenarios.

Pinus sylvestris – *Pinus nigra* stands usually appear closer to the southern distribution of Scots pine, which coincides with the ecological optimum for black pine (Barbéro et al. 1998). Various growth and yield models have been fitted for Scots pine – Black pine mixed stands in Spain (Trasobares et al. 2004a, b, c), some of which even included non-wood products such as fungi (De Aragón et al. 2007; Herrero et al. 2019; Palahí et al. 2009). However, little is known about species complementarity and interactions.

Pinus sylvestris – *Pinus pinaster* mixing effects have also been studied. Crown complementarity and vertical stratification in the canopy make this mixture more productive due

to higher light interception and use compared to pure stands of either species (Riofrío et al. 2017a, b). This mix was also found to have a positive effect on understory richness and tree regeneration compared to monospecific stands (López-Marcos et al. 2020).

Pinus sylvestris – *Fagus sylvatica* stands are probably the most extensively studied mixed forests in Europe. The vast distribution of these mixed stands is due to species niche complementarity (Del Río et al. 2017; Pretzsch and Schütze 2016) in terms of space occupancy efficiency (Pretzsch and Schütze 2009), light tolerance, light use (Del Río et al. 2016; Pretzsch et al. 2015a, b), structural and vertical heterogeneity (Del Río et al. 2017; Pretzsch and Schütze 2009) and root systems (Del Río et al. 2016; Pretzsch et al. 2015a, b; Yeste et al. 2021). This generally translates into higher productivity and greater water use efficiency compared to pure stands, of either species though stand structure and climate conditions influence outcomes in complex ways (Condés et al. 2013, 2018; Del Río et al. 2017; González-de-Andrés et al., 2017, 2018; Pretzsch et al. 2015a, b).

Pinus sylvestris – *Quercus pyrenaica* stands are interesting because of their complementarity and long-term stability in average climate conditions. Pyrenean oak shows low resistance to drought with high recovery rates, while Scots pine has the opposite behavior (Muñoz-Gálvez et al. 2021). Differences in shade tolerance, leaf habits and root depth (Martín-Gómez et al. 2017) lead to higher resource use efficiency in these mixed stands compared to monocultures of either species (Forrester 2014).

Given the importance of Scots pine across Europe and the fact that the Mediterranean region is considered the ecological limit of its distribution (Fernández-de-Una et al. 2015), mixed stands of Scots pine with the aforementioned species hold great interest for the development of Spanish management guidelines. Most studies on the benefits of these four species in mixed forests with *Pinus sylvestris* have focused on the historical evolution of existing stands, using past experience to guide future forest management (Aguirre et al. 2019; Pretzsch et al. 2015a, b; Steckel et al. 2019). While this is quite reasonable, it misses the point that future climate conditions are likely to be different to those of the last 100 years. In Spain, global warming implies that the frequency and intensity of drought events are expected to increase (Kjellström 2004). Thus, empirical guidance based on past data may prove inadequate for future realities.

Forest management techniques can be adapted to respond to the need for mixed forests as a promising way to reduce forest drought stress (Pretzsch et al. 2015a, b; Steckel et al. 2019).

This study was designed to simulate the evolution of CO₂ stock and accumulation rates in pure and mixed stands under different climate change scenarios for the period spanning from the years 2000 to 2100.

We hypothesized that: (1) The more optimistic climate scenarios (SSP1 > > SSP5) would have higher CO₂ stock and accumulation rates; (2) mixed stands would have higher CO₂ stock and accumulation rates than pure stands; and (3) the behavior of both variables would vary according to forest composition (conifer–conifer vs conifer–broadleaf).

Material and methods

The simulations in this study were developed using data from the Spanish Second National Forest Inventory (SNFI2), which is the most extensive spatio-temporal forestry database in Spain, along with new climate-sensitive models and the SIMANFOR platform. In addition to these innovative and robust resources, WordClim was used, a well-recognized climate database that covers our study area.

Data

Forestry data were extracted from Spanish Second National Forest Inventory (SNFI2) plots. These consist of four concentric circles with radii of 5, 10, 15 and 25 m, in each of which multiple tree-level variables were recorded for all trees over 7.5, 12.5, 22.5 and 42.5 cm diameter at breast height (1.3 m), respectively (Alberdi et al. 2016; Herrero and Bravo 2012). Expansion factors were used to estimate stand variables from individual tree variables such as density (N), quadratic mean diameter (Dq), dominant height (Ho), and aboveground (Wa) and belowground (Wr) biomass. Although this study focuses on mixed forest stands, we selected both pure and mixed SNFI2 plots to look at how mixing effects influence tree and stand dynamics. SNFI2 plots (composed of two main species) were considered mixed when the combined proportion of both species (based on basal area) was greater than 90% and the proportion of either species was over 15%. Pure SNFI2 plots (basal area of the main species 90% or higher) found close to the mixed plots were also selected to create triplets for comparison, consisting of the mixed plot and one pure plot of each of its constituent species. Table 1 presents the main tree and stand variables for the selected SNFI2 pure and mixed plots, and Fig. 1 shows their location. The selection criteria prioritized finding mixed plots for each of the four mixtures in the study that also had some pure stands of the constituent species nearby for comparison. Accordingly, useful plots were located in areas where climate and soil conditions allowed for the presence of both species.

Data were taken from the WorldClim2 (Fick and Hijmans 2017) CMIP6 downscaled future climate projections. Mean annual temperature (T) and total precipitation (P) values from five global climate models (BCC-CSM2-MR, CanESM5, CNRM-CM6-1, IPSL-CM6A-LR, MIROC6)

Table 1 Mean values (standard error in brackets) of the main variables for individual and paired species

Species	Plots	d	h	N	dq	Ho	BA	BA _{intra}	BA _{inter}	BAL	BAL _{intra}	BAL _{inter}	M
<i>P. sylvestris</i>	903	20.6 (8.2)	10.0 (3.4)	1036 (617)	18.4 (5.3)	10.4 (3.1)	23.4 (10.3)	19.8 (10.8)	3.5 (5.6)	13.3 (9.3)	11.2 (9.0)	2.1 (3.8)	37 (8)
<i>P. nigra</i>	832	21.3 (9.5)	10.1 (3.8)	969 (591)	18.7 (6.0)	10.5 (3.3)	21.9 (10.0)	17.4 (9.8)	4.5 (6.2)	12.4 (9.1)	9.8 (8.1)	2.6 (4.4)	33 (6)
<i>P. sylvestris</i>	409	25.8 (10.9)	13.4 (4.9)	912 (572)	23.8 (8.0)	13.9 (4.7)	32.9 (13.6)	29.3 (14.9)	3.7 (7.3)	19.0 (12.7)	16.6 (12.6)	2.5 (5.5)	32 (9)
<i>P. pinaster</i>	360	26.8 (10.1)	11.6 (3.9)	952 (569)	23.0 (7.1)	12.1 (3.5)	33.5 (14.6)	29.5 (15.3)	3.9 (6.4)	18.3 (13.2)	16.4 (12.8)	1.8 (3.8)	32 (11)
<i>P. sylvestris</i>	401	27.1 (11.3)	13.7 (4.5)	885 (547)	23.8 (7.9)	14.2 (4.2)	32.6 (14.0)	31.0 (14.6)	1.5 (3.8)	18.3 (12.9)	17.5 (12.8)	0.8 (2.2)	44 (8)
<i>F. sylvatica</i>	169	24.6 (12.4)	15.1 (4.8)	943 (568)	21.4 (7.0)	16.1 (4.0)	27.1 (9.3)	22.2 (10.2)	4.9 (7.9)	16.1 (10.1)	12.8 (9.3)	3.3 (6.1)	44 (8)
<i>P. sylvestris</i>	403	27.0 (12.6)	13.4 (5.3)	995 (628)	23.7 (9.3)	13.9 (5.1)	33.7 (14.1)	32.4 (15.0)	1.3 (3.4)	19.2 (13.1)	18.4 (13.3)	0.8 (2.3)	36 (9)
<i>Q. pyrenaica</i>	199	17.2 (9.3)	9.5 (3.1)	1320 (674)	15.5 (6.0)	10.2 (3.0)	20.8 (8.7)	16.1 (8.2)	4.6 (7.5)	12.4 (8.6)	9.4 (7.4)	2.9 (5.6)	34 (7)

d diameter at breast height (cm), h total tree height (m), N density (trees · ha⁻¹), dq mean quadratic diameter (cm), Ho dominant height (m), BA Basal area (m² · ha⁻¹), BA_{intra} intraspecific basal area (m² · ha⁻¹), BA_{inter} interspecific basal area (m² · ha⁻¹), BAL basal area of larger trees (m² · ha⁻¹), BAL_{intra} intraspecific BAL (m² · ha⁻¹), BAL_{inter} interspecific BAL (m² · ha⁻¹), M De Martonne Index (mm · °C⁻¹)

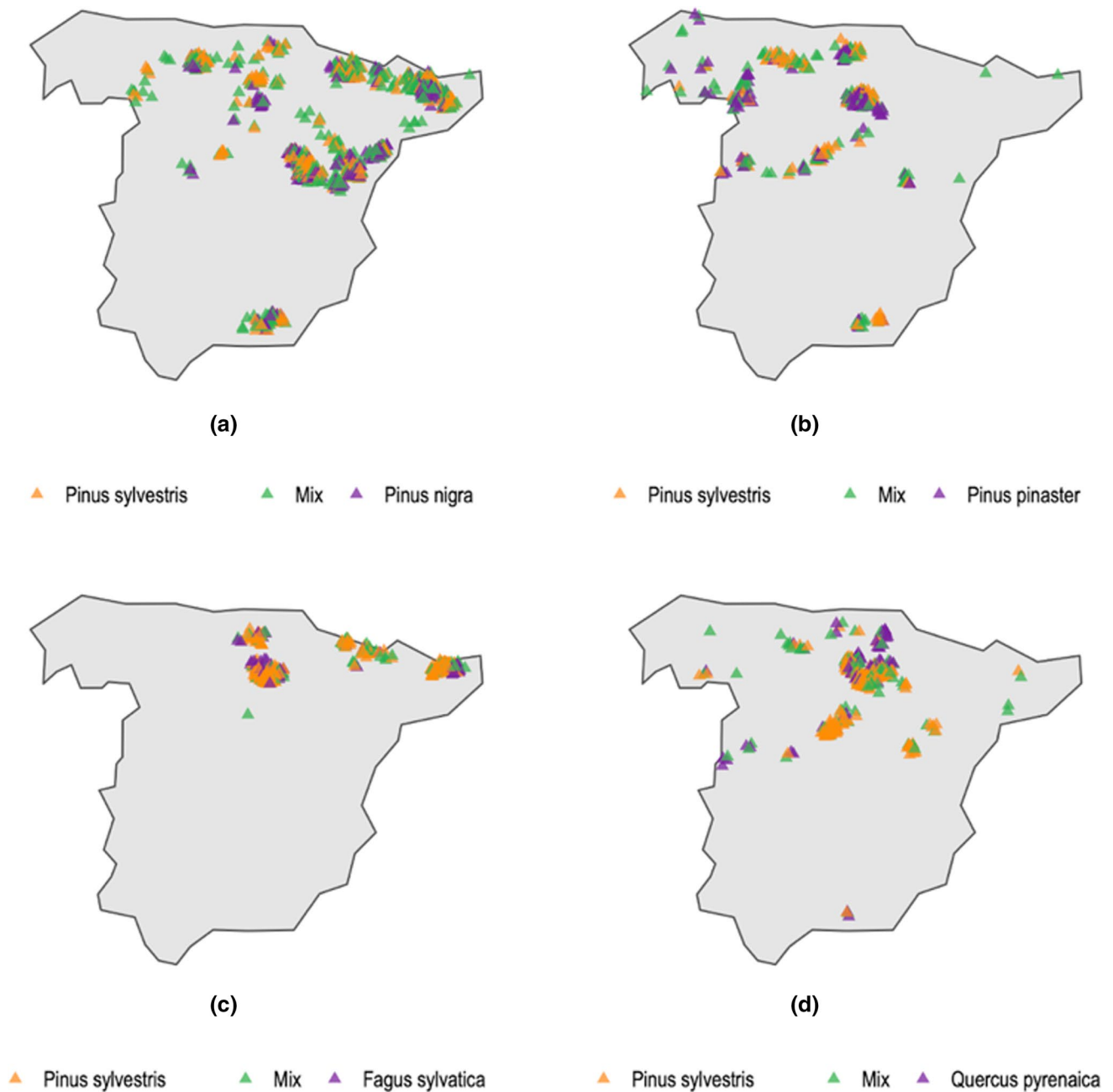


Fig. 1 SNFI2 plot distribution of the four mixtures in Spain. **a** *Pinus sylvestris* – *Pinus nigra*, **b** *Pinus sylvestris* – *Pinus pinaster*, **c** *Pinus sylvestris* – *Fagus sylvatica*, **d** *Pinus sylvestris* – *Quercus pyrenaica*

under four Shared Socioeconomic Pathways (SSP1, SSP2, SSP3 and SSP5) at four different periods (2021–2040, 2041–2060, 2061–2080, 2081–2100) were calculated and derived for selected SNFI2 plots using R programming (R Core Team 2020) and QGIS software (QGIS.org 2021). Data from period 2000–2020 were obtained from the same source, corresponding to real data collected instead of projections.

CO₂ stock and accumulation rate simulation in Spanish mixed forests

In this study, using the SIMANFOR platform (Bravo et al. 2012), CO₂ stock was estimated for five-year periods from 2000 to 2100 under four different SSPs (SSP1, SSP2, SSP3 and SSP5). SIMANFOR was developed to simulate sustainable forest management alternatives. It allows users

Table 2 Tree growth equations model for individual and paired species

Species composition	Species	Equation	RMSE	Marginal R ²	Conditional R ²
<i>Pinus sylvestris</i> - <i>Pinus nigra</i>	<i>Pinus sylvestris</i>	$BAI = e^{(-1.3287 - 0.044 \cdot d + 2.2713 \cdot \ln(d) - 0.0382 \cdot Dg - 0.018 \cdot BA_{intra} - 0.0218 \cdot BA_{inter} - 0.0018 \cdot BAL_{intra} - 0.008 \cdot BAL_{inter} + 0.0081 \cdot M)}$	0.5841	0.5642	0.2596
	<i>Pinus nigra</i>	$BAI = e^{(-1.7176 - 0.0495 \cdot d + 2.3873 \cdot \ln(d) + 0.0187 \cdot h - 0.0464 \cdot Dg - 0.0255 \cdot BA_{intra} - 0.0095 \cdot BA_{inter} - 0.0087 \cdot BAL_{inter} + 0.0158 \cdot M)}$	0.5474	0.6150	0.3310
<i>Pinus sylvestris</i> - <i>Pinus pinaster</i>	<i>Pinus sylvestris</i>	$BAI = e^{(-1.4576 - 0.0393 \cdot d + 2.3275 \cdot \ln(d) + 0.0225 \cdot h - 0.0441 \cdot Dg - 0.0205 \cdot BA_{intra} - 0.013 \cdot BA_{inter} - 0.0016 \cdot BAL_{intra} + 0.01 \cdot M)}$	0.6040	0.5059	0.2909
	<i>Pinus pinaster</i>	$BAI = e^{(-0.6012 - 0.0249 \cdot d + 2.1674 \cdot \ln(d) - 0.0419 \cdot Dg - 0.0149 \cdot BA - 0.0033 \cdot BAL_{intra})}$	0.6026	0.5378	0.2891
<i>Pinus sylvestris</i> - <i>Fagus sylvatica</i>	<i>Pinus sylvestris</i>	$BAI = e^{(-1.9087 - 0.0366 \cdot d + 2.2551 \cdot \ln(d) + 0.0173 \cdot h - 0.0224 \cdot Dg - 0.0102 \cdot BA_{intra} - 0.0305 \cdot BA_{inter} + 0.0083 \cdot M)}$	0.6450	0.5009	0.2975
	<i>Fagus sylvatica</i>	$BAI = e^{(-3.0448 - 0.0378 \cdot d + 2.3552 \cdot \ln(d) + 0.0421 \cdot h - 0.0159 \cdot Dg - 0.0361 \cdot BA_{intra} - 0.0214 \cdot BA_{inter} + 0.0178 \cdot M)}$	0.6885	0.6161	0.4949
<i>Pinus sylvestris</i> - <i>Quercus pyrenaica</i>	<i>Pinus sylvestris</i>	$BAI = e^{(-1.1121 - 0.0374 \cdot d + 2.2161 \cdot \ln(d) + 0.0191 \cdot h - 0.0447 \cdot Dg - 0.0206 \cdot BA_{intra} - 0.0024 \cdot BAL_{intra} + 0.0133 \cdot M)}$	0.6268	0.5305	0.3006
	<i>Quercus pyrenaica</i>	$BAI = e^{(-2.2915 - 0.0568 \cdot d + 2.2302 \cdot \ln(d) + 0.0671 \cdot h - 0.0258 \cdot BA_{intra} - 0.0174 \cdot BA_{inter} - 0.0132 \cdot BAL_{inter})}$	0.6286	0.5703	0.4166

d diameter at breast height (cm), *h* total tree height (m), *dq* quadratic mean diameter (cm), *BA* stand basal area (m²·ha⁻¹), *BAL* basal area of larger trees (m²·ha⁻¹), subscripts inter and intra designate interspecific and intraspecific BA or BAL, *M* De Martonne Aridity Index (mm·°C⁻¹), *RMSE* root mean square error

to compare different silvicultural scenarios and choose one that best fits their management objectives. From forest inventory and silvicultural scenario inputs, inventory data are processed using equations for the selected model. Successive steps provide the user with output information about individual tree and stand evolution at every stage of the planned scenario. Until now, the SIMANFOR simulator has only worked for pure stand models without climate influence. For this study, new tree growth and allometric functions were added to the SIMANFOR platform, making it possible to simulate dynamics in mixed forest stands under various climate conditions. Tree growth was characterized by tree basal area increment (BAI) and estimated using the distance-independent climate-dependent mixed models fitted by Rodríguez-de-Prado et al. (2022a), which are presented in Table 2.

Diameter at breast height was then derived from BAI estimates and used to predict total tree height using h–d models (Rodríguez-de-Prado et al. 2022b), as shown in Table 3.

We controlled for mortality based on the maximum stand carrying capacity (SDI_{max}), which defines the maximum number of trees per hectare where natural mortality occurs in a forest stand. At each iteration, the Stand Density Index (SDI) (Reineke 1933) and SDI_{max} were estimated using the climate-dependent MSDR models found in Rodríguez-de-Prado et al. (2020) for each species in each SNFI2 sample plot. Thus, while SDI_{max} ≥ SDI, mortality does not occur in a specific plot for a given species, when SDI_{max} < SDI, the expansion factor for all the trees of that species decreases by 2%. As a consequence, the stand density value (trees · ha⁻¹) of the species decreases by 2% and the simulation assumes that change going forward. Biomass compartments (root, stem, leaves, crown) were calculated for each tree using equations from Ruiz-Peinado et al. (2011, 2012). Biomass estimates were grouped into above- and belowground biomass and then transformed into C values using the corresponding conversion factors for each species: *Fagus sylvatica* (0.486), *Pinus nigra* (0.464), *Pinus pinaster* (0.468), *Pinus sylvestris* (0.459) and *Quercus pyrenaica* (0.457). Finally, the C values were multiplied by 3.67 to obtain CO₂ values. The simulations assumed null incorporated forest mass or regeneration processes. All the SIMANFOR simulations were done using the supercomputing services of a regional Scientific Computing Center known as SCAYLE (SCAYLE 2021). Its higher computational capacity compared to desktop and web versions increased the velocity of the simulation process. After that, all the generated outputs (at tree and plot level) were combined, re-structured and analyzed using R language programming (R Core Team 2020).

Table 3 Tree height-diameter equations for individual and paired species

Species composition	Species	Equation	RMSE
<i>Pinus sylvestris</i> – <i>Pinus nigra</i>	<i>Pinus sylvestris</i>	$h = 1.3 + \left(\beta_0 \left(\frac{1}{d} - \frac{1}{d_0} \right) + \left(\frac{1}{H_0 - 1.3} \right)^{1/3} \right)^{-3}$ $\beta_0 = (0.8792 - 0.0068 \cdot BAL + 0.0465 \cdot dq)$	0.5841
	<i>Pinus nigra</i>	$h = 1.3 + \left(\beta_0 \left(\frac{1}{d} - \frac{1}{d_0} \right) + \left(\frac{1}{H_0 - 1.3} \right)^{1/2} \right)^{-2}$ $\beta_0 = (1.4454 - 0.0136 \cdot BAL + 0.04743 \cdot dq)$	0.5474
<i>Pinus sylvestris</i> – <i>Pinus pinaster</i>	<i>Pinus sylvestris</i>	$h = 1.3 + (H_0 - 1.3) e^{\beta_0 \left(1 - \frac{d_0}{d} \right) + \beta_1 \left(\frac{1}{d_0} - \frac{1}{d} \right)}$ $\beta_0 = (0.1674 - 0.0846 \cdot Pi); \beta_1 = 5.7848$	0.6040
	<i>Pinus pinaster</i>	$h = 1.3 + \left(\beta_0 \left(\frac{1}{d} - \frac{1}{d_0} \right) + \left(\frac{1}{H_0 - 1.3} \right)^{1/2} \right)^{-2}$ $\beta_0 = (2.7801 - 0.0132 \cdot BAL - 0.0203 \cdot dq)$	0.6026
<i>Pinus sylvestris</i> – <i>Fagus sylvatica</i>	<i>Pinus sylvestris</i>	$h = 1.3 + (H_0 - 1.3) e^{\beta_0 \left(1 - \frac{d_0}{d} \right) + \beta_1 \left(\frac{1}{d_0} - \frac{1}{d} \right)}$ $\beta_0 = (-0.1063 + 0.0037 \cdot M); \beta_1 = 7.1987$	0.6450
	<i>Fagus sylvatica</i>	$h = 1.3 + \left(\beta_0 \left(\frac{1}{d} - \frac{1}{d_0} \right) + \left(\frac{1}{H_0 - 1.3} \right)^{1/3} \right)^{-3}$ $\beta_0 = (-0.0049) \cdot BAL + 0.02429 \cdot dq_i + 0.6819 \cdot P_i)$	0.6885
<i>Pinus sylvestris</i> – <i>Quercus pyrenaica</i>	<i>Pinus sylvestris</i>	$h = 1.3 + (H_0 - 1.3) e^{\beta_0 \left(1 - \frac{d_0}{d} \right) + \beta_1 \left(\frac{1}{d_0} - \frac{1}{d} \right)}$ $\beta_0 = 0.0038 \cdot M; \beta_1 = 4.3652$	0.6268
	<i>Quercus pyrenaica</i>	$h = 1.3 + \left(\beta_0 \left(\frac{1}{d} - \frac{1}{d_0} \right) + \left(\frac{1}{H_0 - 1.3} \right)^{1/2} \right)^{-2}$ $\beta_0 = (-0.0091 \cdot BAL + 0.0163 \cdot dq_i + 1.2693 \cdot P_i)$	0.6286

h total tree height (m), d diameter at breast height (cm), d_0 dominant diameter (cm), H_0 dominant height (m), dq quadratic mean diameter (cm), dq_i quadratic mean diameter of the species i (cm), BAL basal area of larger trees ($m^2 \cdot ha^{-1}$), P_i species proportion by area, M De Martonne Aridity Index ($mm \cdot ^\circ C^{-1}$), β_0 and β_1 model parameters to be estimated, $RMSE$ root mean square error

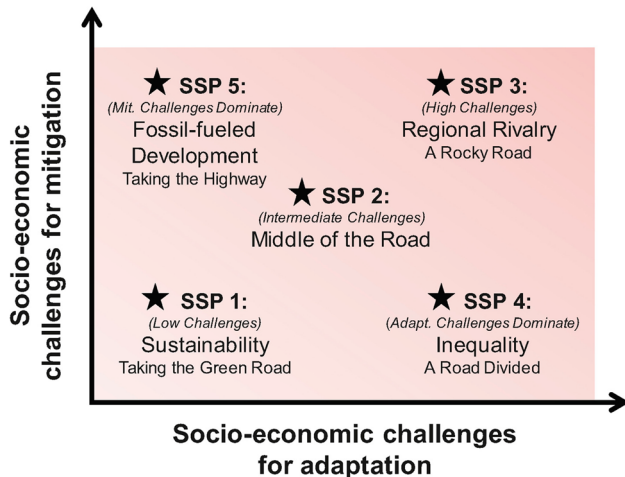


Fig. 2 Overview of Shared Socioeconomic Pathways (SSPs) representing combinations of mitigation and adaptation challenges related to climate change [Figure extracted from O'Neill et al. (2017)]

Shared socioeconomic pathways (SSPs)

Four different Shared Socioeconomic Pathways scenarios (SSPs) were considered in this paper. Shared Socioeconomic Pathways are scenarios describing how the world would look in the absence of climate policy. They allow researchers to examine barriers and opportunities related to climate mitigation and adaptation by combining possible future scenarios with mitigation targets (Meinshausen et al. 2020; Riahi et al. 2017). SSPs are based on five narratives (Fig. 2) representing distinct future socioeconomic projections and political environments that span the range of plausible futures:

SSP1 and SSP5 anticipate reasonably positive patterns in human development, including “significant investments in education and health, robust economic growth, and well-functioning institutions.” However, they differ in that SSP5 assumes this would be powered by an energy-intensive, fossil-fuel economy, while SSP1 assumes a gradual transition toward sustainable practices. SSP3 and SSP4 are more negative about the economic and social growth potential of their nations; they reflect low investment in education and health in poorer countries along

with rapidly rising population and growth disparities. SSP2 is a “middle of the road” scenario in which historical growth trends are maintained in the twenty-first century. Data from SSP4 were not available in WorldClim, so this scenario was not analyzed in our study.

The De Martonne aridity index (De Martonne 1926) calculated as $P/(T + 10)$ (where P is the total annual precipitation in mm, and T the mean annual temperature in °C) is a climate index commonly still used to describe the aridity gradient or drought in a given area (Aguirre et al. 2018; Bielak et al. 2014; Condés et al. 2017). In this study, the De Martonne Index was one of the variables selected to predict mortality in the SDI and SDI_{max}

models (Rodríguez-de-Prado et al. 2021) as well as tree growth for BAI productivity and h–d models (Tables 2 and 3). The climate scenarios described above were used to predict four different De Martonne aridity indexes in each SFN12 plot. Each plot was simulated four times (one per SSP scenario), and four De Martonne aridity indexes were calculated for each plot, based on the climate predictions for four time periods: 2000–2020, 2020–2040, 2040–2060 and 2060–2100.

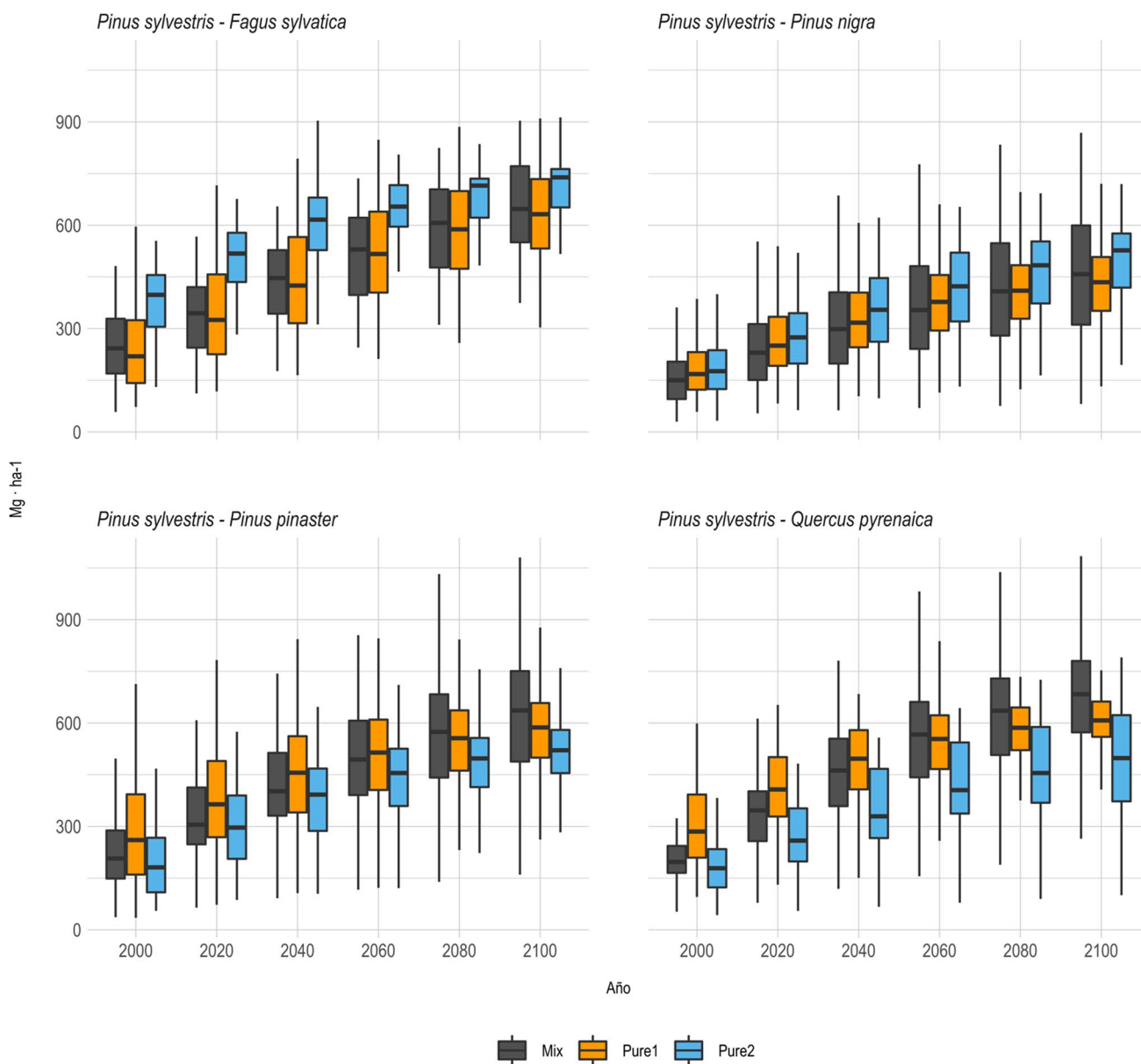


Fig. 3 Total CO₂ stock (Mg · ha⁻¹) simulation for the 2000–2100 period in the most realistic SSP scenario (SSP2)

Results

Forest CO₂ stock simulation for *Pinus sylvestris* mixtures during the 2000–2100 period

Simulated CO₂ stock with different *Pinus sylvestris* mixtures and SSPs for the 2000–2100 period is shown in Supplementary Table 4. We found a common SSP1 > SSP2 > SSP3 > SSP5 trend with higher stock values in the most optimistic scenario (SSP1) and lower values in the most pessimistic scenario (SSP5). The results also show that CO₂ stock patterns evolved differently in pure and mixed stands. Early in the simulation period, mixed stands generally had less stock capacity than their respective pure stands. However, our findings indicate that the differences reduced drastically as time progressed and that by the end of the simulation period mixed stands had greater CO₂ stock capacity than pure stands.

Based on SSP2 as an intermediate future scenario, *Pinus sylvestris*-*Fagus sylvatica* mixed stands had less stock capacity than *Pinus sylvestris* (1.0%) and *Fagus sylvatica* (57.5%) pure stands in the year 2000 (Fig. 3). By the year 2100, these differences had changed to 3.6% and 9.8%, respectively. Similarly, *Pinus sylvestris* and *Pinus nigra* pure stands both had ~ 17.5% higher stock rates than their mixture early on. By the end of the simulation period, stock in the mixed stands was 6.4% higher than in *Pinus sylvestris* pure stands and the difference with respect to *Pinus nigra* monocultures had decreased by ~ 10.0%. In the *Pinus sylvestris*-*Pinus pinaster* mixture, the mixed stands initially presented greater stock capacity (11.0%) than *Pinus pinaster* pure stands but less than *Pinus sylvestris* pure stands (27.8%). By the year 2100, the mixed stands had greater stock capacity (15.9% and 8.1%) than *Pinus pinaster* and *Pinus sylvestris* pure stands, respectively. A similar trend was found in *Pinus sylvestris*-*Quercus pyrenaica* mixtures, with initially higher CO₂ stock in the mixed stands compared to *Quercus pyrenaica* pure stands (9.7%) and lower CO₂ stock compared to *Pinus sylvestris* pure stands (47.5%). Differences with the latter reduced in successive timespans to the point that CO₂ stock in mixed stands surpassed that of pure stands. At the end of the simulation period, the mixed stands had 25.7% and 11.7% more stock capacity than *Quercus pyrenaica* and *Pinus sylvestris* pure stands, respectively.

Aboveground and belowground CO₂ were also simulated in our study (Supplementary Table 4), and several trends were observed based on species traits in the mixtures analyzed. In conifer–broadleaf mixtures, we found that the aboveground proportion of stored CO₂ tended to increase in successive simulation periods in both pure and mixed stands. For these mixtures, aboveground biomass increased by 1.1% in *Pinus sylvestris*-*Fagus sylvatica* mixed stands

and by 2.2% in *Pinus sylvestris*-*Quercus pyrenaica* mixed stands during the study period.

The opposite trend occurred for conifer–conifer mixtures, both of which experienced a small but steady decrease in aboveground biomass proportion between 2000 and 2100 in all SSPs. However, differences were found between pure and mixed stands of *Pinus sylvestris*-*Pinus nigra* and *Pinus sylvestris*-*Pinus pinaster*. In the first, the aboveground stored CO₂ proportion for *Pinus sylvestris* pure stands decreased over time (2.0%), while *Pinus nigra* pure stands increased by the same amount. In the second, the aboveground stored CO₂ proportion for *Pinus pinaster* pure stands decreased notably (3.7%) but increased for *Pinus sylvestris* pure stands as time progressed.

The results presented in this section are also available in terms of biomass (Mg · ha⁻¹) in Supplementary Table 5.

Forest CO₂ accumulation rate simulation for the 2000–2100 period

Based on simulated CO₂ stock values, accumulation rate in terms of megagrams of CO₂ and biomass (above- and belowground) per hectare and year was determined for successive periods from 2000 to 2100 (Supplementary Tables 6 and 7).

In the initial period, total biomass accumulation rates for *Pinus sylvestris* in mixed stands ranged from 4.0–6.6 Mg · ha⁻¹ · yr⁻¹. Differences were observed between pure stands and mixtures. *Pinus sylvestris* – *Pinus nigra* had similar accumulation rates (4–4.5 Mg · ha⁻¹ · yr⁻¹) for mixed and pure stands. Mixed stands of *Pinus sylvestris*-*Fagus sylvatica* presented higher accumulation rates than *Pinus sylvestris* pure stands (23.9%), but slightly lower rates (5.4%) than *Fagus sylvatica* pure stands. However, *Pinus sylvestris* mixtures with *Pinus pinaster* or *Quercus pyrenaica* presented higher accumulation rates than their respective pure stands (~ 2 Mg · ha⁻¹ · yr⁻¹). Similar patterns were found for the aboveground and belowground fractions also, with two exceptions: The accumulation rate in *Pinus sylvestris* pure stands was initially lower than in *Fagus sylvatica* and their mixed stands in the aboveground fraction (64.1% and 46.2%, respectively), but the belowground accumulation rate was higher (25.0% and 3.8%, respectively) and *Pinus sylvestris* pure stands showed slightly higher aboveground accumulation rates than *Pinus nigra* pure stands and their mixed stands (3.4% and 5.3%, respectively), but the opposite occurred in belowground accumulation rates (68.7% and 20.0%, respectively).

For all analyzed mixtures, accumulation rates for both pure and mixed stands decreased significantly from the beginning to the end of the simulation period under all SSPs included in the study (Supplementary Table 6). Our results indicate that these reductions would be less drastic in mixed stands than in pure ones. Here, it is important to highlight

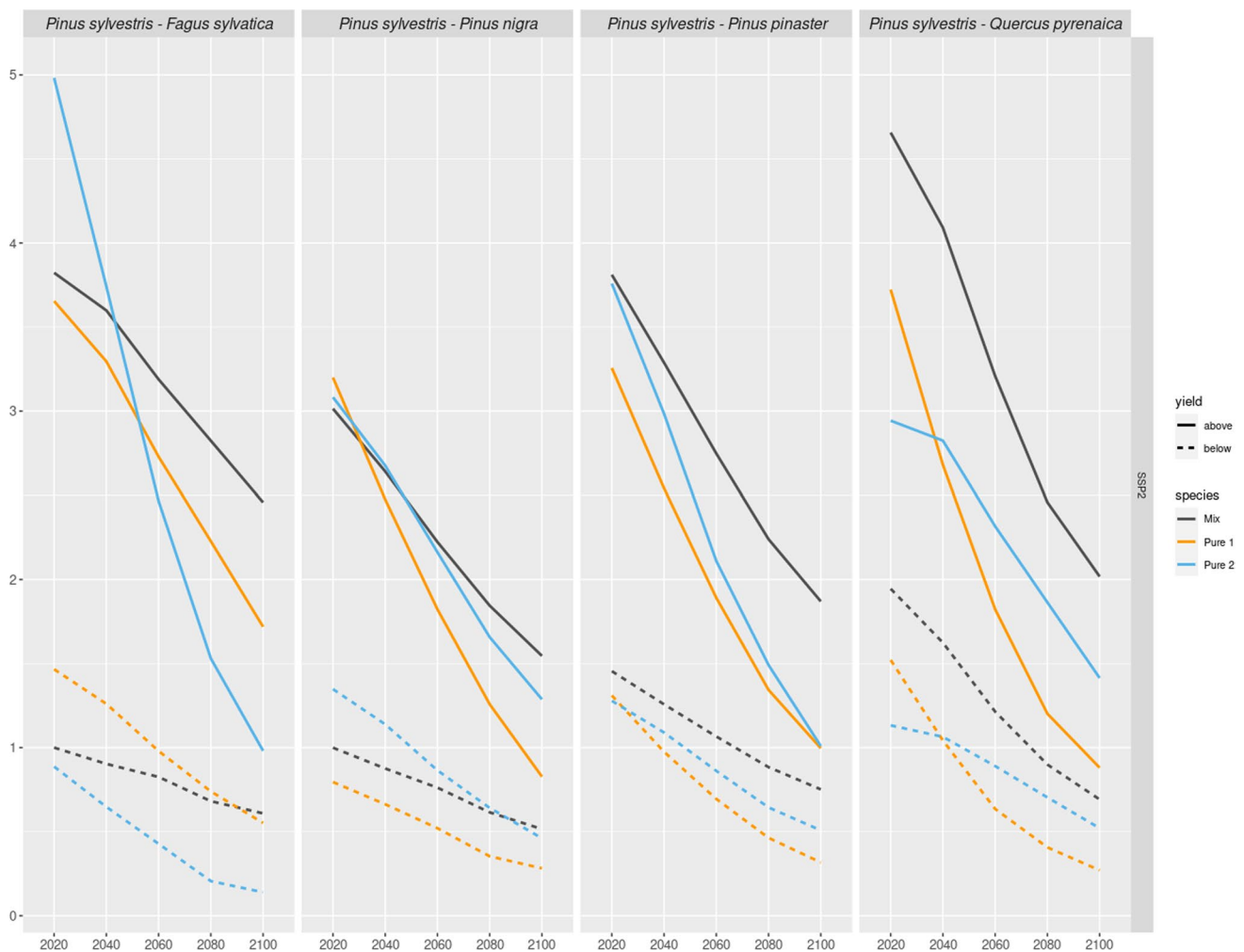


Fig. 4 Mean CO₂ accumulation rates (Mg · ha⁻¹ · year⁻¹) for the different studied mixtures and tree fractions for the 2000–2100 period based on the intermediate scenario (SSP2)

that accumulation rates in all mixed stands, fractions (above-ground and belowground) and SSPs were higher than in pure stands at the end of the simulation period.

Using SSP2 as the “middle-of-the-road” future scenario, differences in accumulation rates between 2000 and 2100 ranged from 30 to 50% in mixed stands and from 50 to 80% in pure stands. Conifer–conifer mixed stands experienced a similar accumulation rate decrease of ~50%. In conifer–broadleaf mixtures, accumulation rates decreased by 36.3% in *Pinus sylvestris*–*Fagus sylvatica* and by nearly 60.0% in *Pinus sylvestris*–*Quercus pyrenaica* mixtures. Our results for CO₂ stock simulations (Supplementary Table 4) were also consistent with the SSP1 > SSP2 > SSP3 > SSP5 pattern of higher accumulation rates under the most optimistic scenario (SSP1) and lower values under the most pessimistic scenario (SSP5).

In comparing accumulation rate decreases between SSP5 and SSP1, we found that in the *Pinus sylvestris*–*Fagus*

sylvatica mixture, the *Pinus sylvestris* accumulation rate decreased by 6.0% and *Fagus sylvatica* by 7.9%, compared to a 19.1% reduction in their mixed stand. In the *Pinus sylvestris*–*Quercus pyrenaica* group, the accumulation rate decreased by 3.5% in *Pinus sylvestris* and by 2.3% in *Fagus sylvatica*, compared to a 3.4% reduction in their mixed stand. Figure 4 shows the simulated accumulation rates of the various mixtures and forest types (pure and mixed) for the 2000–2100 period. Though conifer–broadleaf mixed stand species had different initial growth trends, the outcomes were quite similar. *Fagus sylvatica* pure stand accumulation rates for CO₂ were initially higher than *Pinus sylvestris* and *Pinus*–*Fagus* mixed stands for aboveground production (35.3% and 9.1%, respectively) and lower for belowground production (40.9% and 31.2%, respectively). Nevertheless, their accumulation rates decreased faster than the other cases and fell below *Pinus sylvestris* and mixed stand values for above- and belowground CO₂ production at around 2050 and

2090, respectively. Additionally, mixed stand production was higher than *Pinus sylvestris* pure stands during the entire study period and accumulation rate reduction over time had a shallower slope. At the end of the simulation (using SSP2 as reference), total CO₂ accumulation rate reductions in mixed stands were lower (36.1%) than in pure *Fagus sylvatica* (80.0%) or *Pinus sylvestris* (54.8%) stands. The initial accumulation rate in *Pinus sylvestris* pure stands was higher (22.1%) than in *Quercus pyrenaica* monocultures, but by the end of the study period, *Quercus pyrenaica* pure stands were more productive (41.4%) than *Pinus sylvestris* stands, as reflected in both the above- (38.1%) and belowground (50.0%) accumulation rates. Nonetheless, *Pinus-Quercus* mixed-stand accumulation rates were higher than those of their pure stands throughout the studied period, with dramatic differences of 56.7% and 30.0% for aboveground and 61.0% and 21.9% for belowground accumulation rates, respectively, by the year 2100.

The CO₂ accumulation rates in conifer–conifer mixtures led to similar stock results. *Pinus nigra* had lower accumulation rate reduction (60.8%) than *Pinus sylvestris* (72.3%) in pure stands, except for the aboveground accumulation rate during the first period. The accumulation rate for *Pinus nigra* pure stands was 8.5% higher than in mixed stands during the early periods, but mixed stands eventually surpassed them by as much as 15.7% (in the *Fagus sylvatica* mixture, aboveground fraction). In the other conifer mixture, *Pinus pinaster* pure stands were more productive than *Pinus sylvestris* pure stands for aboveground, belowground and total production from the beginning (21.1% of total production) to the end (22.2% of total production) of the study period. However, mixed-stand accumulation rates were always higher than those of the respective pure stands, and the accumulation rate reduction over time was also smaller (50.2% CO₂ accumulation rate reduction). Comparatively, although the initial accumulation rates were different in the two mixtures, the trends described in both cases were quite similar and the aboveground accumulation rate decreased remarkably more than the belowground rate.

While in some cases, initial production was higher in pure stands than in their respective mixtures, the slope for all mixed stands tended to be shallower compared to pure stands (49.2% and 50.1% growth reduction, respectively). Mixed-stand above- and belowground productivity surpassed that of the corresponding pure stands at the end of the study period. Additionally, broadleaf–conifer mixtures showed more drastic reductions in belowground (35.6% with *Fagus sylvatica* and 56.5% with *Quercus pyrenaica*) than aboveground (39.6% with *Fagus sylvatica* and 64.4% with *Quercus pyrenaica*) CO₂ accumulation rate. For conifer–conifer mixtures, however, the opposite occurred in both belowground (49.4% for *Pinus nigra* and 51.1% for *Pinus pinaster*) and aboveground (46.5% for *Pinus nigra* and 48.8% for *Pinus*

pinaster) results. Differences in total CO₂ accumulation rates between the extreme SSPs for mixtures ranged from 1.54% to 10.73%. The latter number corresponds to the mixture with *Fagus sylvatica*, which proved to be the most extreme case in this study.

Discussion

This study analyzed the simulated evolution of CO₂ stock and accumulation rates in Mediterranean pure and mixed tree stands in four climate scenarios for time period of the year 2000 to 2100. Results showed consistent differences among climate scenarios in CO₂ stock and accumulation rates in the forests studied. Though species mixtures were found to influence stand behavior, the results revealed a common trend of higher CO₂ stock and accumulation rates in mixed vs pure stands.

Our findings also indicated higher CO₂ stock and accumulation rates in the most optimistic climate scenario (SSP1) compared to the most pessimistic one (SSP5). Contrary findings were reported previously for Swedish boreal forests by Poudel et al. (2011), with higher production in the climate change scenarios than under control conditions. Given the initial local climate conditions in those forests, results from that study may support the idea that climate change effects could be favorable there due to low or null rainfall reduction and increased temperatures. In Mediterranean forests, however, the results would indicate a situation of increasing drought stress that decreases CO₂ accumulation rates and subsequent stock capacity. Looking at other factors, Morán-Ordóñez et al. (2020) simulated future carbon stock capacity and other ecosystem services in a Mediterranean forest. They concluded that management policies would be more decisive than climate in providing ecosystem services. In the present work, not applying silviculture, the CO₂ accumulation rate decreased on each period, consistently in all SSPs, due to the increase on climate conditions severity, as it was found by (Ma et al. 2014; Steenberg et al. 2011).

Our findings showed that CO₂ stock was higher in pure stands at the start of the study period, but the differences diminished over time and mixed stands even surpassed them in the end. Although species mixtures were found to influence stand responses, a clear tendency toward higher CO₂ stocks in mixed stands emerged over long simulation periods, which is consistent with previous studies, Dai et al. (2016) reported similar findings for subtropical coniferous plantations in China. Muñoz-Gálvez et al. (2021) and Pardo et al. (2021), associated higher CO₂ storage in mixed stands with higher resistance and resilience in mixed vs. pure stands, with very similar fluctuations in all the climate scenarios studied.

The complementary effects hypothesis links tree species diversity and stand productivity to explain the advantages of mixed stands over monocultures (Aarssen 1997; Loreau 2000; Steckel et al. 2019; Van de Peer et al. 2018). According to this hypothesis, mixed forests with varying leaf areas, canopy heights and growth rates can obtain and utilize resources more effectively, thus improving stand productivity (Tilman et al. 1997). Jucker et al. (2014) argue that *Pinus sylvestris* stands let enough light pass through the canopy to allow broadleaf plants to grow below. Similarly, morphological differences in the canopies of *Pinus sylvestris* and oak complement each other and increase light utilization throughout the forest (Pretzsch et al. 2015a, b). For the mixed coniferous forests analyzed in the present work, the pure-stand accumulation rate of *Pinus sylvestris*, *Pinus pinaster*, and *Pinus nigra* was very similar (Fig. 4), and their accumulation rate curves ran almost parallel to each other. Mixed stands of *Pinus sylvestris* with either of the other two conifer species also showed a relatively similar accumulation rate that decreased by nearly the same value (about 50%) by the end of the simulation, indicating overyielding of about 28% compared to pure *Pinus sylvestris* stands.

Of the combinations studied, our results indicated that *Pinus sylvestris*–*Fagus sylvatica* and *Pinus sylvestris*–*Pinus nigra* mixed stands had smaller differences with respect to pure stands of *Pinus sylvestris*, *Fagus sylvatica* and *Pinus nigra*. Previous studies have reported higher accumulation rates for *Fagus sylvatica* in mixed stands compared to pure stands (Del Río et al. 2016). This was expressed in terms of overyielding (Condés et al. 2013) and even transgressive overyielding (Pretzsch and Schütze 2009) and attributed to species niche complementarity (Del . 2017). Our results for *Pinus nigra* were quite similar, although differences between pure and mixed stands were lower during all the periods. Specific studies for *Pinus sylvestris*–*Pinus nigra* interactions are lacking in the literature, but since *P. nigra* is a close relative of *P. sylvestris* (Gernandt et al. 2005), the similar behavior and niches of both species could explain the scant differences between pure and mixed stands. In a recent study, Aguirre et al. (2019) found that mixed stands of two *Pinus* species generally had a neutral or negative effect on each other, resulting in similar or lower productivity than in pure stands. Toigo et al. (2015) also suggested that overyielding would occur in some cases and underyielding in others, depending on the degree of complementarity and competition between the two but also on abiotic conditions. They also observed that combining two conifers does usually not lead to significant overyielding, which is broadly in line with our simulation results.

In contrast, overyielding was seen in *Quercus pyrenaica* – *Pinus sylvestris* mixtures at the end of the study period. This result is consistent with previous studies of *Pinus sylvestris* – *Pinus pinaster* (Riof. 2017a, b) and *Pinus sylvestris*

– *Quercus pyrenaica* mixtures (Muñoz-Gálvez et al. 2021). In conifer–conifer mixtures, vertical structure complementarity due to differences in growth velocity could lead to higher light-use efficiency, while in the conifer–broadleaf mixtures, complementarity in crown and root systems may imply higher belowground resource efficiency (Forrester et al. 2014; Forrester and Bauhus 2016). However, although the results for the two mixtures indicated overyielding, both were found to benefit stand regeneration in prior studies (Del . 2009; López-Marcos et al., 2020). This suggests a positive effect on long-term stand stability.

One of the main findings of the present work is that the mixed stands in the study showed a smaller decline over time. In the trend that emerged, mixed stands eventually outperformed or widened the gap in relation to pure stands. In the first stage, the CO₂ accumulation rate remained high and stable or increased slightly in all four mixtures (Fig. 4). This may have been related to initial forest conditions. (SDI was not at maximum, competition between trees was less intense, and forests were growing faster.) In our simulations, we established a 2% reduction for all trees when SDI reached a constant SDI_{max}. Theoretically, this would allow for relatively high growth until the forest reached SDI_{max}. Then, after SDI > SDI_{max}, in pure stands, CO₂ growth would enter a multi-year cycle featuring a short sudden increase followed by a decrease, and then stability [regardless of climate, i.e., De Martonne aridity index (M)]. In mixed stands, each 2% reduction had the potential to change the species composition, driving the forest to the most stable species ratio. In this scenario, the growth rate in mixed stands would moderately exceed that of the stable period for pure stands. We did not reach this stage in the 100-year timeframe of the simulation. However, the curve for mixed forest CO₂ production rate presented a small, sudden fluctuation at the horizontal coordinate of the year 2020 due to the fact that M did not vary continuously in our simulations but is updated every 20 years (Fig. 4).

Our results may also suggest that the various combinations of tree species analyzed may respond differently to harsh living conditions in future. In the simulations, M decreased with SSP, so that higher M values were found in SSP 1 (most optimistic scenario) than in SSP 5 (least optimistic scenario). Similarly, the total CO₂ stock for all pure and mixed stands decreased as SSP became more severe (decreasing M), and M began to act on growth and mortality. However, mixed-stand accumulation rates were significantly higher than those of their respective pure stands under the studied scenarios.

In our findings, overyielding in terms of CO₂ accumulation rates appeared in all four species mixtures. However, there was a clear difference between the results obtained for the mixture of *Pinus sylvestris* with the two broadleaf species. The CO₂ accumulation rates in the *Pinus sylvestris*

– *Fagus* mix were 30–37% higher than in a pure *Pinus sylvestris* stand. In contrast, *Pinus sylvestris* – *Quercus* mixes produced only 24% overyielding relative to pure *Pinus sylvestris* stands, which was the lowest result of the four groups. Although the accumulation rate of pure *Fagus* stands declined rapidly as the study progressed, its high initial value may suggest that it could rapidly occupy a portion of the mixed stands. This means that the mixed forest would not be dominated by either species and both would contribute to overproduction. The same would apply to the *Pinus sylvestris* – *Quercus* mixture. The simulations clearly indicate that *Fagus sylvatica* is well suited for mixing with *Pinus sylvestris*. Reality also bears this out, as the two species are complementary in the shape of their canopies and the spatial use of their root systems (Pretzsch et al. 2015a, b). *Pinus sylvestris* roots usually occupy only the upper 0–40 cm of soil, whereas *Fagus sylvatica* roots can reach depths of 40–80 cm and can help *Pinus* bring water from deeper to shallower layers. *Fagus* also brings minerals from the deeper layers to the surface through its own growth cycle, in the form of leaf litter, etc. This improves the humus layer (Pretzsch et al. 2015a, b) and upper soil minerals, optimizing the soil environment for *Pinus*. However, drought tolerance in *Pinus–Fagus* stands is a concern that may limit future viability. Martín-Gómez et al. (2017) have indicated that *Quercus* trees may have a significant survival advantage over *Pinus* trees under prolonged drought conditions. The decline of *Pinus* forests and their subsequent conversion to *Quercus* forests has been observed in many locations. The same was observed in our simulation results, where the CO₂ accumulation rate for *Quercus* declined only moderately between SSP1 and the more arid SSP5. The *Pinus–Quercus* mixture could therefore be much more drought tolerant than the *Pinus–Fagus* mixture.

Conclusions

Innovative simulations of the evolution of CO₂ sequestration capacity in Mediterranean pure and mixed stands were developed and presented in this work using the SIMANFOR platform and data from the Spanish National Forest Inventory. These simulations predicted the evolution of various pure and mixed forests under four climate scenarios. Higher CO₂ stock and accumulation rate values accompanied the most optimistic climate change scenario (SSP1) and lower values were detected in the most pessimistic scenario (SSP5).

Pure and mixed stands differed in terms of CO₂ stock and CO₂ accumulation rate over time. At the beginning of the simulation period, mixed stands generally presented lower CO₂ stock than their respective pure stands, but the

differences were drastically reduced by the end of the simulation period in favor of the mixed forests, as reflected in the CO₂ accumulation rate.

Interest in conifer–broadleaf mixed stands has increased in recent years, and forestry policies can be designed to support species mixtures in the effort to create more resilient stands. Our results showed similar behavior in the conifer–conifer combinations, but the conifer–broadleaf mixtures exhibited opposite trends. While *Pinus sylvestris* – *Fagus sylvatica* had the lowest accumulation rate reduction, *Pinus sylvestris–Quercus pyrenaica* had the highest. Mixed forests in the study exhibited overyielding compared to pure forests, which highlights the importance of mixing species that will yield higher CO₂ values at the end of the simulation period.

Further research is needed to reduce vulnerability in Mediterranean forests through better understanding of how mixed stands evolve under different management options. Replicating simulations of this kind can inform the development of silvicultural guidelines and measures that will help forest ecosystems adapt to climate change.

Supplementary Information The online version contains supplementary material available at <https://doi.org/10.1007/s10342-022-01507-y>.

Acknowledgments This study was subsidized by the Junta de Castilla y León through the project “Internationalisation of research structures of excellence (CL-EI-2021-05)” linked to “CLU-2019-01—iuFOR Institute Unit of Excellence” of the University of Valladolid and co-financed by the European Regional Development Fund (ERDF “Europe drives our growth”). The authors would like to thank the Spanish Ministry of Economy and Competitiveness for funding this research through the Industrial PhD project [Grant DI-15-07722] and the Torres Quevedo programme [Grant PTQ-12-05409]. The authors are also grateful to the Ministry for Ecological Transition and the WorldClim team for sharing and providing data for this study. We acknowledge the World Climate Research Programme and its Working Group on Coupled Modelling, which coordinated and promoted CMIP6. We thank the climate modeling groups for producing and sharing their model output, the Earth System Grid Federation (ESGF) for archiving the data and providing access, and the multiple funding agencies that support CMIP6 and ESGF. Also, this study used resources from the Centro de Supercomputación de Castilla y León (SCAYLE, <https://www.scayle.es/>), which is financed by the European Regional Development Fund (ERDF).

Author’s contributions DRdP was involved in conceptualization, methodology, formal analysis, research, data curation, visualization, writing—original draft, writing — review and editing. AVV contributed to formal analysis, research, data curation, writing—original draft, writing — review and editing. YFQ was involved in research, writing—original draft. IR contributed to writing — review and editing. FB was involved in conceptualization, writing — review and editing, supervision. CHdA contributed to conceptualization, writing — review and editing, supervision, project administration.

Funding Open Access funding provided thanks to the CRUE-CSIC agreement with Springer Nature. This work was made possible through the funding of the Spanish Ministry of Economy and Competitiveness research Industrial PhD project [Grant DI-15–07722] and the Torres Quevedo programme [Grant PTQ-12–05409].

Availability of data and material This work used data from the Ministry for Ecological Transition and the WorldClim team, the Earth System Grid Federation (ESGF), and the National Forest Inventory of Spain. Also, this study used the resources of the Centro de Supercomputación de Castilla y León (SCAYLE, www.scayle.es), financed by the European Regional Development Fund (ERDF).

Code availability The SIMANFOR forest simulator platform was used for this work and is available at <http://www.simanfor.es/>.

Declarations

Conflict of interest The authors have no conflicts of interest to declare. All co-authors have seen and agree with the contents of the manuscript and there is no financial interest to report. We certify that the submission is original work and is not under review by any other publication.

Open Access This article is licensed under a Creative Commons Attribution 4.0 International License, which permits use, sharing, adaptation, distribution and reproduction in any medium or format, as long as you give appropriate credit to the original author(s) and the source, provide a link to the Creative Commons licence, and indicate if changes were made. The images or other third party material in this article are included in the article's Creative Commons licence, unless indicated otherwise in a credit line to the material. If material is not included in the article's Creative Commons licence and your intended use is not permitted by statutory regulation or exceeds the permitted use, you will need to obtain permission directly from the copyright holder. To view a copy of this licence, visit <http://creativecommons.org/licenses/by/4.0/>.

References

- Aarssen LW (1997) High productivity in grassland ecosystems: effected by species diversity or productive species? *Oikos* 80(1):183–184
- Aguirre A, Del Río M, Condés S (2019) Productivity estimations for monospecific and mixed pine forests along the Iberian Peninsula aridity gradient. *Forests* 10(5):430. <https://doi.org/10.3390/f10050430>
- Alberdi I, Sandoval V, Condés S, Cañellas I, Vallejo R (2016) El Inventario Forestal Español, una herramienta para el conocimiento, la gestión y la conservación de los ecosistemas forestales arbolados. *Ecosistemas* 25:88–96. <https://doi.org/10.7818/ECOS.2016.25-3.10>
- Allen M, Antwi-Agyei P, Aragon-Durand F, Babiker M, Bertoldi P, Bind M et al (2019) Technical Summary: Global warming of 1.5 C. An IPCC Special Report on the impacts of global warming of 1.5 C above pre-industrial levels and related global greenhouse gas emission pathways, in the context of strengthening the global response to the threat of climate change, sustainable development, and efforts to eradicate poverty. <http://pure.iiasa.ac.at/15716>
- Álvarez S, Ortiz C, Díaz-Pinés E, Rubio A (2016) Influence of tree species composition, thinning intensity and climate change on carbon sequestration in Mediterranean mountain forests: a case study using the CO2Fix model. *Mitig Adapt Strateg Glob Change* 21:1045–1058. <https://doi.org/10.1007/s11027-014-9565-4>
- Aranda I, Gil L, Pardos J (2004) Improvement of growth conditions and gas exchange of *Fagus sylvatica* L. seedlings planted below a recently thinned *Pinus sylvestris* L. stand. *Trees* 18(2):211–220. <https://doi.org/10.1007/s00468-003-0296-5>
- Astigarraga J, Andivia E, Zavala MA, Gazol A, Cruz-Alonso V, Vicente-Serrano S, Ruiz-Benito P (2020) Evidence of non-stationary relationships between climate and forest responses: increased sensitivity to climate change in Iberian forests. *Glob Change Biol* 26:5063–5076. <https://doi.org/10.1111/gcb.15198>
- Barbéro M, Losiel R, Queézel P, Richardson DM (1998) Pines of the mediterranean basin. In: Richardson DM (ed) *Ecology and biogeography of pinus*. Cambridge University Press, Cambridge
- Bravo F, Rodríguez F, Ordóñez C (2012) A web-based application to simulate alternatives for sustainable forest management: SIMANFOR. *For Syst* 21(1):4–8. <https://doi.org/10.5424/fs/2112211-01953>
- Carrión JS, Fernández S, Jiménez-Moreno G, Fauquette S, Gil-Romera G, González-Sampériz P, Finlayson C (2010) The historical origins of aridity and vegetation degradation in southeastern Spain. *J Arid Environ* 74:731–736. <https://doi.org/10.1016/j.jaridenv.2008.11.014>
- Condés S, Del Río M, Sterba H (2013) Mixing effect on volume growth of *Fagus sylvatica* and *Pinus sylvestris* is modulated by stand density. *For Ecol Manage* 292:86–95. <https://doi.org/10.1016/j.foreco.2012.12.013>
- Condés S, Sterba H, Aguirre A, Bielak K, Bravo-Oviedo A, Coll L et al (2018) Estimation and uncertainty of the mixing effects on scots pine—European beech productivity from national forest inventories data. *Forests* 9(9):518. <https://doi.org/10.3390/f9090518>
- Dai E, Wu Z, Ge Q, Xi W, Wang X (2016) Predicting the responses of forest distribution and aboveground biomass to climate change under RCP scenarios in southern China. *Glob Change Biol* 22(11):3642–3661. <https://doi.org/10.1111/gcb.13307>
- De Aragón JM, Bonet JA, Fischer CR, Colinas C (2007) Productivity of ectomycorrhizal and selected edible saprotrophic fungi in pine forests of the pre-Pyrenees mountains, Spain: predictive equations for forest management of mycological resources. *For Ecol Manage* 252(1–3):239–256. <https://doi.org/10.1016/j.foreco.2007.06.040>
- De Martonne E (1926) L'indice d'aridité. *Bulletin De L'association De Géographes Français* 3(9):3–5
- De Rigo D, Caudullo G, Houston Durrant T, San-Miguel-Ayanz J (2016) The European atlas of forest tree species: modelling, data and information on forest tree species. In: San-Miguel-Ayanz J, De Rigo D, Caudullo G, Houston Durrant T, Mauri A (eds) *European Atlas of Forest Tree Species*. Publications Office of the European Union, Luxembourg, pp e01aa69+. <https://w3id.org/mtv/FISE-Comm/v01/e01aa69>
- Del Río M, Sterba H (2009) Comparing volume growth in pure and mixed stands of *Pinus sylvestris* and *Quercus pyrenaica*. *Ann For Sci* 66(5):1–11. <https://doi.org/10.1051/forest/2009035>
- Del Río M, Pretzsch H, Alberdi I, Bielak K, Bravo F, Brunner A, Condés S, Ducey MJ, Fonseca T, Von Lüpke N et al (2016) Characterization of the structure, dynamics, and productivity of mixed-species stands: Review and perspectives. *Eur J for Res* 135:23–49. <https://doi.org/10.1007/s10342-015-0927-6>
- Del Río M, Pretzsch H, Ruíz-Peinado R, Ampoorter E, Annighöfer P, Barbeito I et al (2017) Species interactions increase the temporal stability of community productivity in *Pinus sylvestris*–*Fagus sylvatica* mixtures across Europe. *J Ecol* 105(4):1032–1043. <https://doi.org/10.1111/1365-2745.12727>
- Durrant HT, De Rigo D, Caudullo G (2016) *Pinus sylvestris* in Europe: distribution, habitat, usage and threats. In: San-Miguel-Ayanz J, De Rigo D, Caudullo G, Durrant T, Mauri A (ed) *European Atlas of Forest Tree Species*. Publ. Off. EU, Luxembourg, p e016b94+
- Fernández-de-Una L, Cañellas I, Gea-Izquierdo G (2015) Stand competition determines how different tree species will cope with a warming climate. *PLoS ONE* 10(3):e0122255. <https://doi.org/10.1371/journal.pone.0137932>
- Fick SE, Hijmans RJ (2017) Worldclim 2: New 1-km spatial resolution climate surfaces for global land areas. *Int J Climatol* 37:4302–4315. <https://doi.org/10.1002/joc.5086>

- Forrester DI (2014) The spatial and temporal dynamics of species interactions in mixed-species forests: From pattern to process. *For Ecol Manage* 312:282–292. <https://doi.org/10.1016/j.foreco.2013.10.003>
- Forrester DI, Bauhus J (2016) A Review of Processes Behind Diversity—Productivity Relationships in Forests. *Current Forestry Reports* 2:45–61. <https://doi.org/10.1007/s40725-016-0031-2>
- Gernandt DS, López GG, García SO, Liston A (2005) *Taxon* 54(1):29–42. <https://doi.org/10.2307/25065300>
- González-de-Andrés E, Seely B, Blanco JA, Imbert JB, Lo YH, Castillo FJ (2017) Increased complementarity in water-limited environments in Scots pine and European beech mixtures under climate change. *Ecohydrology* 10(2):e1810. <https://doi.org/10.1002/eco.1810>
- González-de-Andrés E, Camarero JJ, Blanco JA, Imbert JB, Lo YH, Sangüesa-Barreda G, Castillo FJ (2018) Tree-to-tree competition in mixed European beech–Scots pine forests has different impacts on growth and water-use efficiency depending on site conditions. *J Ecol* 106(1):59–75. <https://doi.org/10.1111/1365-2745.12813>
- Herrero C, Bravo F (2012) Can we get an operational indicator of forest carbon sequestration? A case study from two forest regions in Spain. *Ecol Indicators* 17:120–126. <https://doi.org/10.1016/j.ecolind.2011.04.021>
- Herrero C, Berraondo I, Bravo F, Pando V, Olaizola JA, Ordóñez AC, Martín-Pinto P, Oria de Rueda JA (2019) Predicting mushroom productivity from long-term field-data series in mediterranean *Pinus pinaster*. Ait forests in the context of climate change. *Forests* 10:206. <https://doi.org/10.3390/f10030206>
- Jucker T, Bouriaud O, Avacaritei D, Dănilă I, Duduman G, Valladares F, Coomes DA (2014) Competition for light and water play contrasting roles in driving diversity–productivity relationships in Iberian forests. *J Ecol* 102(5):1202–1213. <https://doi.org/10.1111/1365-2745.12276>
- Kjellström E (2004) Recent and future signatures of climate change in Europe. *AMBIO J Hum Environ* 33(4):193–198. <https://doi.org/10.1579/0044-7447-33.4.193>
- Krakau UK, Liesebach M, Aronen T, Lelu-Walter MA, Schneck V (2013). Scots pine (*Pinus sylvestris* L.). In: *Forest tree breeding in Europe*. Springer, Dordrecht, Netherlands, pp 267–323. https://doi.org/10.1007/978-94-007-6146-9_6
- López-Marcos D, Turrión MB, Bravo F, Martínez-Ruiz C (2020) Can mixed pine forests conserve understory richness by improving the establishment of understory species typical of native oak forests? *Ann for Sci* 77(1):1–13. <https://doi.org/10.1007/s13595-020-0919-7>
- Loreau M (2000) Biodiversity and ecosystem functioning: recent theoretical advances. *Oikos* 91:3–17. <https://doi.org/10.1034/j.1600-0706.2000.910101.x>
- Ma J, Hu Y, Bu R, Chang Y, Deng H, Qin Q (2014) Predicting impacts of climate change on the aboveground carbon sequestration rate of a temperate forest in northeastern China. *PLoS ONE* 9(4):e96157. <https://doi.org/10.1371/journal.pone.0096157>
- Martín-Benito D, Del Río M, Cañellas I (2010) Black pine (*Pinus nigra* Arn.) growth divergence along a latitudinal gradient in Western Mediterranean mountains. *Ann for Sci* 67:401. <https://doi.org/10.1051/forest/2009121>
- Martín-Benito D, Kint V, Del Río M, Muys B, Cañellas I (2011) Growth responses of West-Mediterranean *Pinus nigra* to climate change are modulated by competition and productivity: Past trends and future perspectives. *For Ecol Manage* 262(6):1030–1040. <https://doi.org/10.1016/j.foreco.2011.05.038>
- Martín-Benito D, Beeckman H, Cañellas I (2013) Influence of drought on tree rings and tracheid features of *Pinus nigra* and *Pinus sylvestris* in a mesic Mediterranean forest. *Eur J Forest Res* 132(1):33–45. <https://doi.org/10.1007/s10342-012-0652-3>
- Martín-Gómez P, Aguilera M, Pemán J, Gil-Pelegrín E, Ferrio JP (2017) Contrasting ecophysiological strategies related to drought: the case of a mixed stand of Scots pine (*Pinus sylvestris*) and a submediterranean oak (*Quercus subpyrenaica*). *Tree Physiol* 37:1478–1492. <https://doi.org/10.1093/treephys/tpx101>
- Morán-Ordóñez A, Ameztegui A, De Cáceres M, De-Miguel S, Lefèvre F, Brotons L, Coll L (2020) Future trade-offs and synergies among ecosystem services in Mediterranean forests under global change scenarios. *Ecosyst Serv* 45:101174. <https://doi.org/10.1016/j.ecoser.2020.101174>
- Muñoz-Gálvez F, Herrero A, Pérez-Corona M, Andivia E (2021) Are pine-oak mixed stands in Mediterranean mountains more resilient to drought than their monospecific counterparts? *For Ecol Manage* 484:118955. <https://doi.org/10.1016/j.foreco.2021.118955>
- O'Neill BC, Kriegler E, Ebi KL, Kemp-Benedict E, Riahi K, Rothman DS, Solecki W (2017) The roads ahead: Narratives for shared socioeconomic pathways describing world futures in the 21st century. *Glob Environ Chang* 42:169–180. <https://doi.org/10.1016/j.gloenvcha.2015.01.004>
- Palahí M, Pukkala T, Bonet JA, Colinas C, Fischer CR, Martínez de Aragón JR (2009) Effect of the inclusion of mushroom values on the optimal management of even-aged pine stands of Catalonia. *For Sci* 55(6):503–511. <https://doi.org/10.1093/forestscience/55.6.503>
- Pardos M, Del Río M, Pretzsch H, Jactel H, Bielak K, Bravo F, Brazaitis G, Defosse E, Engel M, Godvod K et al (2021) The greater resilience of mixed forests to drought mainly depends on their composition: Analysis along a climate gradient across Europe. *For Ecol Manage* 481:118687. <https://doi.org/10.1016/j.foreco.2020.118687>
- Poudel BC, Sathre R, Gustavsson L, Bergh J, Lundström A, Hyvönen R (2011) Effects of climate change on biomass production and substitution in north-central Sweden. *Biomass Bioenerg* 35:4340–4355. <https://doi.org/10.1016/j.biombioe.2011.08.005>
- Pretzsch H (2014) Canopy space filling and tree crown morphology in mixed-species stands compared with monocultures. *For Ecol Manage* 327:251–264. <https://doi.org/10.1016/j.foreco.2014.04.027>
- Pretzsch H, Schütze G (2009) Transgressive overyielding in mixed compared with pure stands of Norway spruce and European beech in Central Europe: evidence on stand level and explanation on individual tree level. *Eur J Forest Res* 128(2):183–204. <https://doi.org/10.1007/s10342-008-0215-9>
- Pretzsch H, Schütze G (2016) Effect of tree species mixing on the size structure, density, and yield of forest stands. *Eur J for Res* 135:1–22. <https://doi.org/10.1007/s10342-015-0913-z>
- Pretzsch H, Del Río M, Ammer C, Avdagic A, Barbeito I, Bielak K, Brazaitis G, Coll L, Dirnberger G, Drössler L, Fabrika M, Forrester DI, Godvod K, Heym M, Hurt V, Kurylyak V, Löf M, Lombardi F, Matović B et al (2015a) Growth and yield of mixed versus pure stands of Scots pine (*Pinus sylvestris* L.) and European beech (*Fagus sylvatica* L.) analysed along a productivity gradient through Europe. *Eur J for Res* 134(5):927–947. <https://doi.org/10.1007/s10342-015-0900-4>
- Pretzsch H, Forrester DI, Rötzer T (2015b) Representation of species mixing in forest growth models. A review and perspective. *Ecol Model* 313:276–292. <https://doi.org/10.1016/j.ecolmodel.2015.06.044>
- Pretzsch H, Del Río M, Schütze G, Ammer C, Annighöfer P et al (2016) Mixing of Scots pine (*Pinus sylvestris* L.) and European beech (*Fagus sylvatica* L.) enhances structural heterogeneity, and the effect increases with water availability. *For Ecol Manage* 373:149–166. <https://doi.org/10.1016/j.foreco.2016.04.043>
- Pretzsch H, Steckel M, Heym M, Biber P, Ammer C, Ehbrecht M, Bielak K, Bravo F, Ordóñez C, Collet C, Vast F, Drössler L et al

- (2020) Stand growth and structure of mixed-species and monospecific stands of Scots pine (*Pinus sylvestris* L.) and oak (*Q. robur* L., *Quercus petraea* (Matt.) Liebl.) analysed along a productivity gradient through Europe. *Eur J for Res* 139(3):349–367. <https://doi.org/10.1007/s10342-019-01233-y>
- QGIS.org (2021) QGIS Geographic Information System. QGIS Association
- R Core Team (2020) R: A language and environment for statistical computing. R Foundation for Statistical Computing, Vienna, Austria. <https://www.R-project.org/>
- Reineke LH (1933) Perfecting a stand-density index for even-aged forests. *J Agric Res* 46:627–638
- Riofrío J, Del Río M, Bravo F (2017a) Mixing effects on growth efficiency in mixed pine forests. *For Int J for Res* 90(3):381–392. <https://doi.org/10.1093/forestry/cpw056>
- Riofrío J, Del Río M, Pretsch H, Bravo F (2017b) Changes in structural heterogeneity and stand productivity by mixing Scots pine and Maritime pine. *For Ecol Manage* 405:219–228. <https://doi.org/10.1016/j.foreco.2017.09.036>
- Riofrío J, Del Río M, Maguire D, Bravo F (2019) Species mixing effects on height–diameter and basal area increment models for scots pine and maritime pine. *Forests* 10(3):249. <https://doi.org/10.3390/f10030249>
- Rodríguez-de-Prado D, San-Martín R, Bravo F, Herrero C (2020) Potential climate influence on maximum stand carrying capacity for 15 Mediterranean coniferous and broadleaf species. *For Ecol Manage* 460:117824. <https://doi.org/10.1016/j.foreco.2019.117824>
- Rodríguez-de-Prado D, Riofrío J, Aldea J, Bravo F, Herrero C (2022a) Competition and climate influence in the basal area increment models for Mediterranean mixed forests. *For Ecol Manage* 506:119955. <https://doi.org/10.1016/j.foreco.2021.119955>
- Rodríguez-de-Prado D, Riofrío J, Aldea J, McDermott J, Bravo F, Herrero C (2022b) Species mixing proportion and aridity influence in the height-diameter relationship for different species mixtures in mediterranean forests. *Forests* 13(1):119. <https://doi.org/10.3390/f13010119>
- Ruiz-Peinado R, Del Río M, Montero G (2011) New models for estimating the carbon sink capacity of Spanish softwood species. *For Syst* 20(1):176–188. <https://doi.org/10.5424/fs/2011201-11643>
- Ruiz-Peinado R, Montero G, Del Río M (2012) Biomass models to estimate carbon stocks for hardwood tree species. *For Syst* 21(1):42–52. <https://doi.org/10.5424/fs/2112211-02193>
- SCAYLE (2021) Supercomputación Castilla y León. Accessed: 09 May 2021
- Serrada R, Montero G, Reque JA (2008) Compendio de selvicultura aplicada en España (No. 634.95 C737). Instituto Nacional de Investigación y Tecnología Agraria y Alimentaria, Madrid (España) Ministerio de Educación y Ciencia, Madrid (España)
- Steckel M, Heym M, Wolff B, Reventlow D, Pretsch H (2019) Transgressive overyielding in mixed compared with monospecific Scots pine (*Pinus sylvestris* L.) and oak (*Quercus robur* L., *Quercus petraea* (Matt.) Liebl.) stands—Productivity gains increase with annual water supply. *For Ecol Manage* 439:81–96. <https://doi.org/10.1016/j.foreco.2019.02.038>
- Steenberg JW, Duinker PN, Bush PG (2011) Exploring adaptation to climate change in the forests of central Nova Scotia Canada. *For Ecol Manage* 262(12):2316–2327. <https://doi.org/10.1016/j.foreco.2011.08.027>
- Tilman D, Knops J, Wedin D, Reich P, Ritchie M, Siemann E (1997) The influence of functional diversity and composition on ecosystem processes. *Science* 277:1300–1302. <https://doi.org/10.1126/science.277.5330.1300>
- Toigo M, Vallet P, Perot T, Bontemps JD, Piedallu C, Courbaud B (2015) Overyielding in mixed forests decreases with site productivity. *J Ecol* 103:502–512. <https://doi.org/10.1111/1365-2745.12353>
- Trasobares A, Pukkala T (2004a) Optimising the management of uneven-aged *Pinus sylvestris* L. and *Pinus nigra* Arn. mixed stands in Catalonia, north-east Spain. *Ann for Sci* 61(8):747–758. <https://doi.org/10.1051/forest:2004a071>
- Trasobares A, Pukkala T (2004b) Using past growth to improve individual-tree diameter growth models for uneven-aged mixtures of *Pinus sylvestris* L. and *Pinus nigra* Arn. in Catalonia, north-east Spain. *Ann for Sci* 61(5):409–417. <https://doi.org/10.1051/forest:2004034>
- Trasobares A, Tomé M, Mina J (2004) Growth and yield model for *Pinus halepensis* Mill in Catalonia, north-east Spain. *For Ecol Manage* 203(1–3):49–62. <https://doi.org/10.1016/j.foreco.2004.07.060>
- Vadell E, De-Miguel S, Pemán J (2016) Large-scale reforestation and afforestation policy in Spain: a historical review of its underlying ecological, socioeconomic and political dynamics. *Land Use Policy* 55:37–48. <https://doi.org/10.1016/j.landusepol.2016.03.017>
- Van de Peer T, Verheyen K, Ponette Q, Setiawan NN, Muys B (2018) Overyielding in young tree plantations is driven by local complementarity and selection effects related to shade tolerance. *J Ecol* 106:1096–1105. <https://doi.org/10.1111/1365-2745.12839>
- Yeste A, Blanco J, Imbert J, Zozaya-Vela H, Elizalde-Arbilla M (2021) *Pinus sylvestris* L. and *Fagus sylvatica* L. effects on soil and root properties and their interactions in a mixed forest on the South-western Pyrenees. *For Ecol Manage* 481:118726. <https://doi.org/10.1016/j.foreco.2020.118726>

Publisher's Note Springer Nature remains neutral with regard to jurisdictional claims in published maps and institutional affiliations.

Authors and Affiliations

Diego Rodríguez de Prado¹ · Aitor Vázquez Veloso^{1,2} · Yun Fan Quian^{1,3} · Irene Ruano^{1,2} · Felipe Bravo^{1,2} · Celia Herrero de Aza¹

¹ Instituto Universitario de Investigación en Gestión Forestal Sostenible (iuFOR), Universidad de Valladolid, Avda. Madrid 44, 34004 Palencia, Spain

² Departamento de Producción Vegetal y Recursos Forestales. ETS de Ingenierías Agrarias, Universidad de Valladolid, Avda. Madrid S/N, 34004 Palencia, Spain

³ ECM Ingeniería Ambiental, S.L., Calle Curtidores 17, 34004 Palencia, Spain