

Transplantation. 2013 Jun 27;95(12):1535-1541

## Treatment of Knee Osteoarthritis with Autologous Mesenchymal Stem Cells: A Pilot Study

Lluís Orozco,<sup>1</sup> Anna Munar,<sup>1</sup> Robert Soler,<sup>1</sup> Mercedes Alberca,<sup>2</sup> Francesc Soler,<sup>3</sup> Marina Huguet,<sup>4</sup> Joan Sentís,<sup>5</sup> Ana Sánchez,<sup>2</sup> and Javier García-Sancho<sup>2,6</sup>

**Background.** Osteoarthritis is the most prevalent joint disease and a frequent cause of joint pain, functional loss, and disability. Osteoarthritis often becomes chronic, and conventional treatments have demonstrated only modest clinical benefits without lesion reversal. Cell-based therapies have shown encouraging results in both animal studies and a few human case reports. We designed a pilot study to assess the feasibility and safety of osteoarthritis treatment with mesenchymal stromal cells (MSCs) in humans and to obtain early efficacy information for this treatment.

**Methods.** Twelve patients with chronic knee pain unresponsive to conservative treatments and radiologic evidence of osteoarthritis were treated with autologous expanded bone marrow MSCs by intra-articular injection ( $40 \times 10^6$  cells). Clinical outcomes were followed for 1 year and included evaluations of pain, disability, and quality of life. Articular cartilage quality was assessed by quantitative magnetic resonance imaging T2 mapping.

**Results.** Feasibility and safety were confirmed, and strong indications of clinical efficacy were identified. Patients exhibited rapid and progressive improvement of algofunctional indices that approached 65% to 78% by 1 year. This outcome compares favorably with the results of conventional treatments. Additionally, quantification of cartilage quality by T2 relaxation measurements demonstrated a highly significant decrease of poor cartilage areas (on average, 27%), with improvement of cartilage quality in 11 of the 12 patients.

**Conclusions.** MSC therapy may be a valid alternative treatment for chronic knee osteoarthritis. The intervention is simple, does not require hospitalization or surgery, provides pain relief, and significantly improves cartilage quality.

**Keywords:** Osteoarthritis, Articular cartilage, T2 mapping, Mesenchymal stem cells, Stem cell therapy, Regenerative medicine.

(*Transplantation* 2013;95: 00–00)

Osteoarthritis is the most prevalent chronic joint disease and a frequent cause of joint pain, loss of function, and disability (1). In men ages more than 50 years, osteoarthritis represents the second leading cause of work disability. Furthermore, osteoarthritis is responsible for approximately

2% of all public health expenses (2) and large indirect costs derived from productivity decreases (3). Many treatments have been proposed but resulted in poor clinical results without cartilage repair (4). Articular replacement with prostheses is only recommended as the last treatment option. The American

Financial supports from Teknon Foundation of Barcelona, Program for Support of Independent Clinical Research of the Spanish Ministerio de Sanidad, Red de Terapia Celular (RD06/0010/0000) of the Instituto de Salud Carlos III, Ministerio de Economía y Competitividad, and Centro en Red de Medicina Regenerativa de Castilla y León are gratefully acknowledged. The sponsors had no role in the design and conduct of the study; the collection, management, analysis, and interpretation of the data; or the preparation, review, or approval of the article.

**AQ1** The authors declare no conflicts of interest.

<sup>1</sup> Institut de Teràpia Regenerativa Tissular (ITRT), Centro Médico Teknon, Barcelona, Spain.

<sup>2</sup> Instituto de Biología y Genética Molecular (IBGM), University of Valladolid and CSIC, Valladolid, Spain.

<sup>3</sup> Servicio de Traumatología, EGARSAT, Terrasa, Spain.

<sup>4</sup> Department of Magnetic Resonance Imaging, CETIR Clínica del Pilar, Barcelona, Spain.

<sup>5</sup> Department of Public Health, Medical School, University of Barcelona, Barcelona, Spain.

<sup>6</sup> Address correspondence to: Javier García-Sancho, M.D., Ph.D., Instituto de Biología y Genética Molecular (IBGM), University of Valladolid and CSIC, c/Sanz y Fores, 3, 47003 Valladolid, Spain.

E-mail: jgsancho@ibgm.uva.es

J.G.-S. had full access to all of the data in the study and takes responsibility for the integrity of the data and the accuracy of the data analysis. L.O., R.S., A.S., and J.G.-S. participated in the conception and design of this study. L.O., R.S., and F.S. were primarily responsible for the clinical work. A.M. was responsible for the clinical research and documentation. M.A. and A.S. were responsible for the cell production. M.H. was responsible for the MRI. J.S. was responsible for the statistical analysis. All authors participated in the analysis, discussion, and interpretation of data, contributed to the revision of the article, and gave final approval of the version to be published. J.G.-S. organized all data, conducted meta-analysis and image analysis, and wrote the final draft of the article.

Clinical trial registries: EudraCT 2009-017405-11 and NCT01183728.

Received 22 January 2013. Revision requested 14 February 2013.

Accepted 11 March 2013.

Supplemental digital content (SDC) is available for this article. Direct URL citations appear in the printed text, and links to the digital files are provided in the HTML text of this article on the journal's Web site ([www.transplantjournal.com](http://www.transplantjournal.com)).

Copyright © 2013 by Lippincott Williams & Wilkins

ISSN: 0041-1337/13/9512-00

DOI: 10.1097/TP.0b013e318291a2da

Academy of Orthopaedic Surgeons recommends only physical and educational therapy, symptomatic treatment with acetaminophen or nonsteroidal anti-inflammatory drugs, and sometimes local corticosteroid injection (5). Recommendations of the American College of Rheumatology are very similar (6). Common treatments (7), including physical therapy (8), viscosupplementation (9), glucosamine and/or chondroitin sulfate (10), arthroscopic surgery (11, 12), acupuncture (13, 14), and ultrasound (15), have demonstrated modest to no clinical benefit compared with placebo.

Cell therapy by surgically implanting autologous chondrocytes has been used to regenerate local cartilage defects for more than 20 years (16, 17). Mesenchymal stromal cells (MSCs) have chondrogenic potential (18, 19), which is enhanced by coculture with chondrocytes (20). Additionally, cocultured MSCs induce chondrocyte proliferation and extracellular matrix protein synthesis, including aggrecan and type II collagen (21–23). Therefore, MSCs might be used in place of chondrocytes for cartilage regeneration, and such replacement could be advantageous, especially for diffuse chondral lesions, because MSCs are easier to obtain and expand *in vitro* without differentiation (24). Beneficial MSC effects for chondrogenic repair have been documented in rabbits (18), rats (25, 26), pigs (27), and guinea pigs (28). Labeled MSCs injected into the knee joint are still present in the cartilage 1 week after transplantation and migrate, differentiate, and proliferate (28). In a recent report, a significant fraction of human MSCs that were injected into rat joints remained 2 to 8 weeks after transplantation. These cells became activated and expressed several human genes that triggered the paracrine expression of collagen II and other chondrogenic rat genes in recipient chondrocytes and resulted in meniscal repair (26). Our team performed a feasibility and safety study in three horses; knee joint-injected autologous MSCs were not associated with any identifiable local or general pathologic alterations in necropsy after 6 months. Similar results were obtained in an ovine model (see **Figure S1**, **SDC**, <http://links.lww.com/TP/A811>).

Cartilage defect repair has been performed in a few human cases by surgically implanting MSCs embedded in collagen pads covered with periosteum (24, 29). Autologous MSCs have also been administered by intra-articular injection in two case series with satisfactory results (30, 31).

We conducted a pilot study to test the technique's feasibility and safety and to obtain an early indication of the therapeutic value of MSC treatment in 12 human patients with grades II to IV chronic knee osteoarthritis that was unresponsive to conventional treatments. Using autologous bone marrow Good Manufacturing Practice (GMP)-compliant MSCs (32) maximized the biosecurity of the protocol based on their extensive use for bone marrow transplantation. The minimally invasive intervention does not require surgery. Our results suggest that MSC treatment improves pain and other clinical signs and, in some cases, delays or even reverts the cartilage damage of osteoarthritis.

## RESULTS

### Patient Treatment

This study included 12 patients (6 male and 6 female) ages 49±5 years (mean±SE) who were diagnosed with right (n=6) or left (n=6) Kellgren and Lawrence grades II to IV

knee osteoarthritis (33) by two independent observers. All the selected patients had been unresponsive to conservative treatment (physical and medical) for at least 6 months and nine of them had undergone previous surgery (for more details on antecedent history, see **Table S1**, **SDC**, <http://links.lww.com/TP/A811>). Patients were recruited between August 2010 and January 2011 and were treated between September 2010 and February 2011. No serious adverse events occurred. Minor adverse events are summarized in Table S2 (see **SDC**, <http://links.lww.com/TP/A811>). Transient mild local pain and discomfort in the injected knee during the first 1 to 6 days occurred frequently (50% of patients) and was controlled with ibuprofen.

### Cell Expansion

The following cell parameters were used (mean±SD; n=12): bone marrow volume, 86±9 mL; number of mononuclear cells obtained, 1.13±0.21×10<sup>9</sup>; expansion time, 22±1 days; number of MSCs, 40±1×10<sup>6</sup> suspended in Ringer-lactate at 5×10<sup>6</sup> cells/mL; and viability, 91%±6%. Higher cell densities resulted in decreased viability. After 7 to 10 days in culture, cells became relatively homogeneous and demonstrated a fibroblastic appearance when approaching confluence. This morphology remained unchanged until use (32). The antigenic profile conformed to the International Society for Cellular Therapy criteria for MSCs (34) (see **Figure S2**, **SDC**, <http://links.lww.com/TP/A811>).

### Evolution of Pain, Disability, and Quality of Life

Table 1 summarizes the distribution of knee pain and disability indexes throughout the observation period. The starting point was quite homogeneous in the cohort, with mean values of 45 and 47 for the Visual Analogue Scale (VAS) and Lequesne indexes, respectively. The Western Ontario and McMaster Universities Osteoarthritis Index (WOMAC) values were lower, with pain dominating over rigidity and function loss. These results were consistent with the results obtained in the quality-of-life test (Short Form [SF]-36), where the overall effect was moderate.

Pain was significantly reduced by 3 months after MSC transplantation followed by a smaller additional progressive improvement during the subsequent 9 months (Fig. 1A). **F1** Compared with the basal pain level, improvement was statistically significant at all time points. The MSC healing effect was quite rapid: the improvement at 3 months was 69% of the value obtained at 12 months (Fig. 1). The pattern of 1-year improvement was parallel for VAS, WOMAC, and Lequesne indices and resulted in the displacement of the whole distribution toward smaller values, with a strong decrease of median values (P50%) (Table 1). Pain relief during sports performance, followed systematically in eight patients, was even greater and faster (80% at 3 months) (see **Figure S3**, **SDC**, <http://links.lww.com/TP/A811>). All patients were satisfied with the treatment, and 11 of the 12 patients reported lasting pain relief throughout the 1-year observation period.

Figure 1B shows knee pain relief at the 1-year follow-up, assessed by VAS, as a function of the initial pain score (35). Treatment efficacy is equal to the slope of the line, with a slope of 1 (dotted line) indicating the "perfect treatment". An excellent positive correlation was observed between the

**TABLE 1.** Total score sum of VAS, WOMAC, and Lequesne severity indices

Test	Time	n	Mean	SE	Min	P25% <sup>a</sup>	P50% <sup>a</sup>	P75% <sup>a</sup>	Max
Knee pain VAS-DA (0–100)	0	12	46.9	7.5	0.0	35.8	52.5	66.5	80.0
	3 months	12	25.1	6.8	0.0	3.8	22.5	36.0	74.0
	6 months	12	24.8	6.0	0.0	8.8	16.5	44.0	58.0
	12 months	12	15.4	3.8	0.0	3.0	19.0	24.3	38.0
Knee pain VAS-SP (0–100)	0	8	79.8	6.4	49.0	74.0	88.0	94.5	99.0
	3 months	8	16.4	5.8	1.0	6.0	12.0	21.0	48.0
	6 months	8	11.1	5.1	0	0.0	12.0	26.0	75.0
	12 months	8	15.5	6.4	0	2.3	12.5	31.3	53.0
WOMAC (0–100)									
Pain Subscale	0	12	24.2	4.1	10.0	15.0	17.5	30.0	60.0
	12 months	12	5.8	1.6	0.0	0.0	5.0	10.0	15.0
Rigidity Subscale	0	12	10.4	3.7	0.0	0.0	6.3	15.6	37.5
	12 months	12	5.2	3.2	0.0	0.0	0.0	3.1	37.5
Function loss Subscale	0	12	19.1	3.8	4.4	8.5	14.0	29.0	41.2
	12 months	12	9.4	3.2	0.0	2.2	6.6	12.1	39.7
Total WOMAC Scale	0	12	19.4	3.6	6.3	9.1	14.6	28.1	42.7
	12 months	12	8.3	2.7	0.0	1.8	6.3	12.8	32.3
Lequesne (0–100)	0	12	45.1	5.6	16.7	29.2	43.8	60.4	75.0
	12 months	12	14.9	4.1	0.0	7.3	10.4	21.9	50.0

<sup>a</sup> P25%, P50%, and P75% represent 25th, 50th (median), and 75th percentiles, respectively.

In all cases, the scale was from 0 to 100%. Measurements were performed before cell transplantation (0) and 3, 6, and 12 months afterwards.

Max, maximum value; Min, minimum value; VAS, Visual Analogue Scale; VAS-DA, Visual Analogue Scale for pain associated to daily activities; VAS-SP, Visual Analogue Scale for pain associated to sports activities; WOMAC, Western Ontario and McMaster Universities Osteoarthritis Index.

amount of improvement and the initial score ( $r=0.86$ ), indicating that MSC treatment had a clear pain-relieving effect ( $P<0.001$ ). The slope of the line was 0.69. The evolution of the Lequesne index was very similar (Fig. 1C), wherein correlation between improvement and the initial score was good ( $r=0.70$ ;  $P<0.01$ ). The slope of this line was 0.65. Similar observations were found for the WOMAC index. The pain and physical function loss values are shown in Figure 1D. For the pain component, the correlation between improvement and the initial pain score was also very good ( $r=0.92$ ;  $P<0.001$ ); the efficacy was 0.78. The other components followed the same trends, but the numerical values were smaller.

The SF-36 Quality of Life Questionnaire revealed a very modest impact of MSC therapy by the end of the follow-up period. The differences between baseline and treated values were not significant for any of the eight test subscales (data not shown). The SF-36 questionnaire is known to be less sensitive for assessing knee arthritis than the WOMAC, which was developed specifically for patients with lower extremity arthritis (36). In fact, in several prior studies, the SF-36 scores were scarcely modified in either control or treated osteoarthritis patients (12, 14). Thus, we place more value on the WOMAC scoring system.

### Imaging

Magnetic resonance imaging (MRI) quantitative T2 mapping was used to evaluate articular cartilage quality (37, 38). T2 relaxation time is sensitive to both changes in cartilage hydration and collagen fibril orientation (39–41). T2 relaxation time is longer in remodeling inflammatory

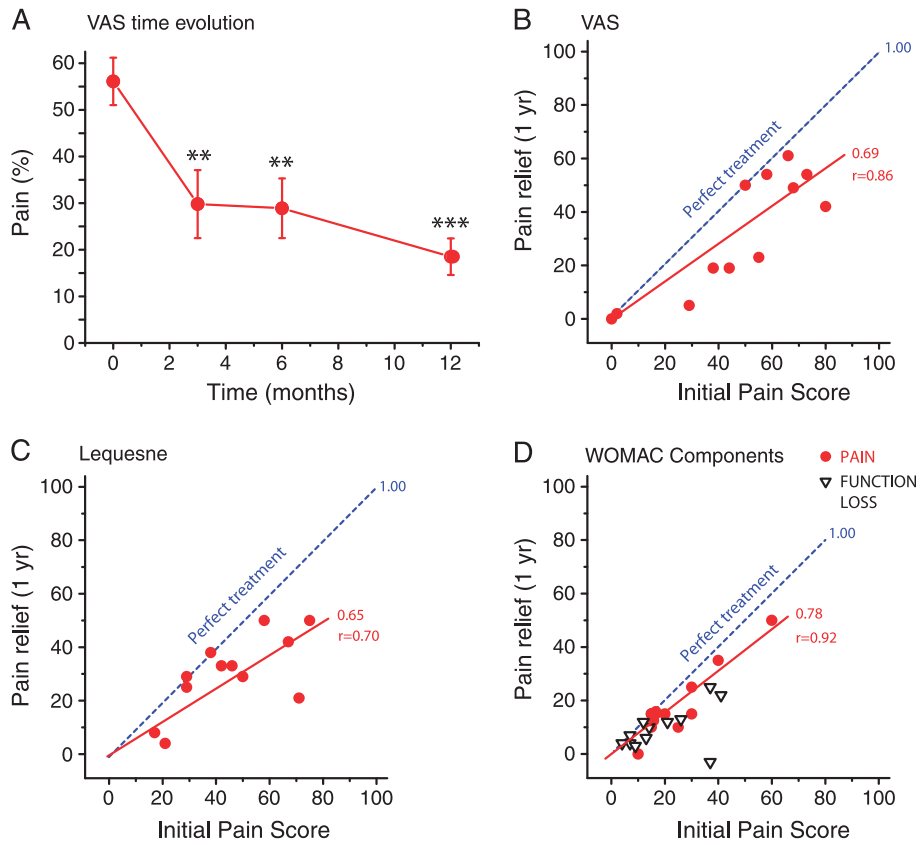
tissue versus hyaline cartilage (40–43) and increases in osteoarthritis (39, 44, 45).

Consistent with previous results in the healthy knee (39–41, 43, 44), the mean $\pm$ SD T2 value was 37.0 $\pm$ 6.8 ms (see Figure S4A, SDC, <http://links.lww.com/TP/A811>). Because 95% of values should be smaller than (mean+2 $\times$ SD), 50 was chosen as the threshold above which T2 values were considered inordinately high. To quantify T2 mapping, a Poor Cartilage Index (PCI) was estimated as the percentage of T2 values more than 50 ms. A PCI of 100 is the worst possible value, and a value near 5 is considered healthy. A positive correlation was identified between the baseline PCI and VAS scores ( $r=0.42$ ;  $P<0.001$ ) (see Figure S4B, SDC, <http://links.lww.com/TP/A811>). Additionally, the mean PCI significantly decreased from 19.5 to 15.4 during the first 6 months after treatment and further decreased to 14.3 at 12 months after injection (Fig. 2A). Figure S4C details individual patient evolution (see SDC, <http://links.lww.com/TP/A811>). The PCI decreased in 11 of 12 patients. Additionally, when PCI improvement was plotted against the initial PCI, a positive correlation ( $r=0.64$ ;  $P<0.020$ ) was noted. The slope of the best-fitting line was 0.27 (Fig. 2B).

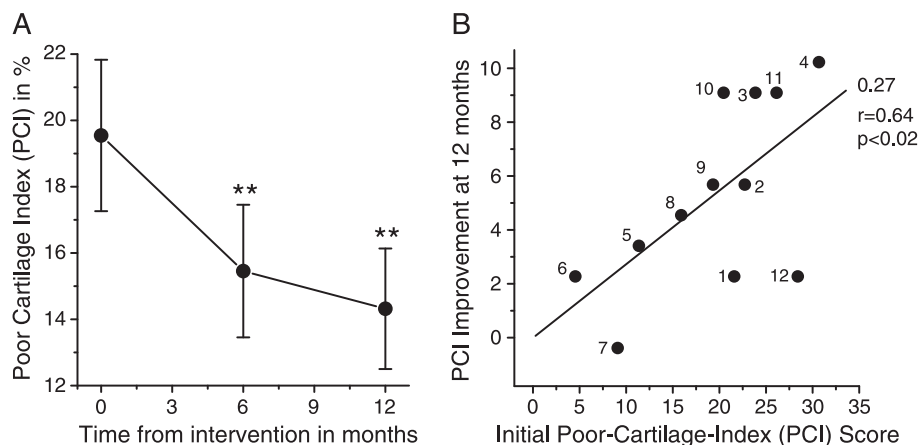
## DISCUSSION

Both animal experimentation and human case studies suggest that intra-articular MSC injection could be a useful therapeutic alternative for treating knee osteoarthritis. Our preliminary studies in horses and sheep (see Figure S1, SDC, <http://links.lww.com/TP/A811>) demonstrated procedural feasibility and safety. Here, we present a phase I to II study of

Fig 1 4/C



**FIGURE 1.** Pain improvement resulting from MSC treatment. A, evolution of knee pain over time, as measured by the VAS. Mean±SE values of 12 patients treated with MSCs. \*\* $P < 0.01$ ; \*\*\* $P < 0.001$  (ANOVA; Bonferroni test for paired values). B–D, correlation between improvement of knee pain 1 year after treatment with MSCs and initial pain score, as measured with different tests. The “perfect” treatment (dotted line with slope of 1) is shown for comparison. The best-fitting lines are shown with values for the slope and linear regression coefficient ( $r$ ) at the right. In case D, the pain and physical function loss subscales of the WOMAC test are shown with different signs (codes at top right). ANOVA, analysis of variance; MSC, mesenchymal stem cells; WOMAC, Western Ontario and McMaster Universities Osteoarthritis Index.

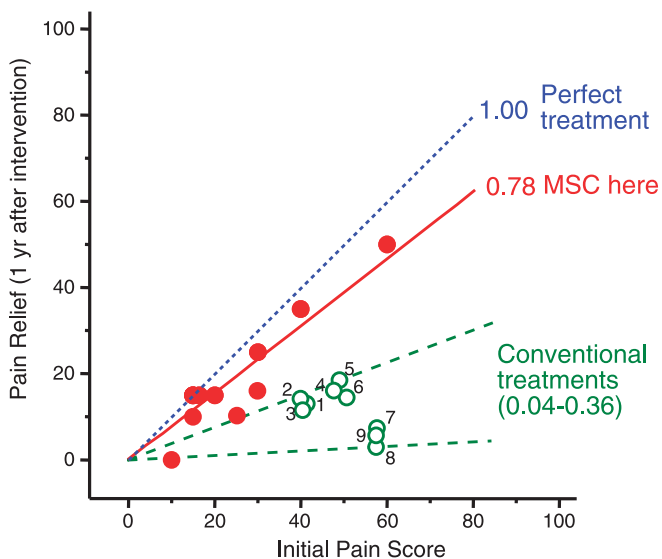


**FIGURE 2.** Cartilage quality improvement resulting from MSC treatment. Cartilage quality was assessed by MRI T2 mapping and is quantified as the PCI (computed as the percentage of sample points with a T2 relaxation value >50 ms). The worse possible value for PCI is 100, and healthy cartilage should approach 5. A, temporal evolution of PCI. Mean±SE values of 12 patients treated with MSCs. \*\* $P < 0.01$  (ANOVA; Bonferroni test for paired values). B, correlation between PCI improvement and initial PCI score for the 12 patients included in this study. Codes for each patient are given beside the data points. The best-fitting line is shown with values for the slope and linear regression coefficient ( $r$ ) at the right. ANOVA, analysis of variance; PCI, Poor Cartilage Index; MRI, magnetic resonance imaging; MSC, mesenchymal stem cells.

12 patients with clinical and objective follow-up coverage for 1 year after intra-articular MSC injection. Our results show that autologous MSC transplantation is both feasible and safe, with no major adverse events recorded. The postimplantation pain observed in 50% of patients responded well to ibuprofen and vanished within 1 to 6 days. Quality control and reproducibility of cell production is essential for meaningful evaluation of cell therapy trials. The GMP-compliant cell preparation (32) was very reproducible with respect to the number of cells ( $SD=3\%$ ) and the expansion time ( $SD=5\%$ ). Immunophenotypic characteristics were also adequate and stable over time. Cell viability was more than 90% and not affected by transport to the administration site.

The analgesic effect of MSC treatment is remarkable, resulting in 65% to 78% improvement in pain (Fig. 1B–D; see **Figure S3**, **SDC**, <http://links.lww.com/TP/A811>). Improvements in function (Fig. 1D) and quality of life are smaller. Our results supersede those of previous case reports, where results were described as “satisfactory” (31) or “encouraging” (30). In these case studies, the number of cells used was smaller ( $8\text{--}20 \times 10^6$ ), follow-up was for only 6 months, and the MRI study, when performed, was not quantitative.

**F3** Figure 3 presents a meta-analysis of four recent high-quality clinical trials (8, 11, 12, 14). Data on pain evolution were recalculated and expressed on a 0 to 100% scale. Quantification and comparison of several osteoarthritis treatments



**FIGURE 3.** Comparison of the efficacy of several osteoarthritis treatments for pain relief. Data from four prestigious clinical trials (8, 11, 12, 14), quantified using the algofunctional WOMAC index, are represented as pain relief versus initial pain score (35). The slope of the lines (values at right) represents efficacy. Lines were forced to pass through the origin. The data from the present study (“MSC here”) are included for comparison (each closed circle corresponds to one patient; three values overlap at 15,15 location). Open circles correspond to results obtained in different trials; the definition of the numerical codes is given in the last column of Table S3 (see **SDC**, <http://links.lww.com/TP/A811>). For a more detailed description, see **Table S3** (**SDC**, <http://links.lww.com/TP/A811>). MSC, mesenchymal stem cells; WOMAC, Western Ontario and McMaster Universities Osteoarthritis Index.

were performed using the initial pain score versus pain relief plot (35). The slope of the line defines the treatment efficacy, with complete pain relief reflected in a slope of 1. Each point represents a given condition (for codes, see last column in Table S3 [see **SDC**, <http://links.lww.com/TP/A811>], which also provides additional trial details). Overall, the slopes oscillated between 0.04 and 0.36 (mean $\pm$ SE,  $0.21\pm 0.04$ ) for seven conventional treatments (see **Table S3**, **SDC**, <http://links.lww.com/TP/A811>). Our results, labeled “MSCs here” in Figure 3, compare very favorably with previous trials that explored conventional treatments (8, 11, 12, 14).

The analgesic effect of MSC treatment was quite rapid, with more than 50% of the total improvement attained by 3 months (Fig. 1A). For sports activities-associated pain, the improvement was even faster (see **Figure S3**, **SDC**, <http://links.lww.com/TP/A811>). Early action has also been reported for the effects of MSCs on degenerative disc disease (32). After this rapid effect, improvement progressed more slowly and the maximum effect was observed at the 1-year follow-up. Pain improvement associated with sports activities was even larger than the pain improvement associated with daily activities (Figure S3).

Our novel approach for analyzing T2 mapping images filters out most spurious variations and enhances sensitivity by focusing on the evolution of the poor cartilage areas. We demonstrate a significant correlation between the PCI and the VAS (see **Figure S4B**, **SDC**, <http://links.lww.com/TP/A811>). Additionally, the PCI was improved significantly by MSC treatment (Fig. 2A), although the magnitude of this effect varied among cases (see **Figure S4C**, **SDC**, <http://links.lww.com/TP/A811>). Finally, the slope of the relationship between PCI improvement and initial the PCI was 0.27 (Fig. 2B), suggesting that cartilage healing, although significant ( $P<0.01$ ), was less than the analgesic effect. Further investigation of cartilage healing progression over longer evolution times, and the effect or repeated MSC application, will be informative.

We can only speculate regarding the mechanisms governing the beneficial effects of MSC treatment. Chondrocytes induce differentiation of cocultured MSCs toward a chondrocyte phenotype (20). Proliferation and differentiation of MSCs to chondrocytes also happen with MSCs injected into knee joints (28). Importantly, MSCs stimulate cocultured cells to proliferate and synthesize extracellular matrix (21, 23, 46). This action may be more important in vivo because few MSCs are required to trigger this effect (22). It was recently shown that transplanted MSCs engraft into the joint, are activated, and express Indian hedgehog and other genes. These genes in turn promote expression of collagen II and other chondrogenic genes by host cells (26). Additionally, MSCs have a well-known immunomodulatory effect (47, 48) and can induce anti-inflammatory cytokine production (22). These data indicate that MSCs may help analgesia by reducing inflammation. Because the analgesic effect is more evident than anatomic restoration, we conclude that the trophic and anti-inflammatory effects of MSCs on the damaged tissue may occur more quickly than the regenerative effects.

In summary, we propose that cell therapy with expanded bone marrow-derived MSCs should be considered as a putative treatment for chronic osteoarthritis. Cell handling and expansion is reproducible, and quality-control tests were satisfactory. The clinical procedure is feasible and safe and requires

only minimally invasive intervention without surgery or hospitalization. The results are better than those obtained with established treatments. Pain relief occurs by 3 months and increases for at least 1 year. The recovery of functional losses is less but also significant, and there is quantitative evidence of partial articular cartilage healing. Future studies will involve larger trials focused on efficacy, with greater patient numbers and longer follow-up periods. These studies will track long-term joint evolution and investigate the specific anatomic and functional changes that occur in the knee.

## MATERIALS AND METHODS

### Patients and Procedures

This pilot phase I to II trial was approved by the Teknon Medical Centre Ethics Committee and the Spanish Drug and Medicines Agency (EudraCT 2009-017405-11) and registered in ClinicalTrials.gov (NCT01183728). Twelve patients with chronic knee osteoarthritis unresponsive to conventional treatments (for details, see **Table S1**, **SDC**, <http://links.lww.com/TP/A811>) were included. Detailed inclusion and exclusion criteria are reported in Table 2. After clinical, analytical, and imaging evaluations to ensure compliance with these criteria, patients were informed about the protocol characteristics and provided written informed consent.

The protocol included seven visits (V0–V6). V0 involved the final check of compliance with inclusion criteria, performance of necessary complementary evaluations and tests, and scheduling of dates for V1 and V2. V1 involved bone marrow harvesting from the iliac crest (80–90 mL) for MSC isolation. This intervention was performed under local anesthesia and slight sedation, and patients were discharged after 2 hr of observation. V2 (21–24 days after V1) involved the injection of MSCs ( $40 \times 10^6$  cells per knee from a  $5 \times 10^6$  cells/mL suspension by medial parapatellar injection). V3 to V6 (8 days and 3, 6, and 12 months after implantation) included clinical evaluation and routine

**TABLE 2.** Inclusion and exclusion criteria

#### Inclusion criteria

1. Grade II to IV osteoarthritis according to the Kellgren–Lawrence grading scale (33) and concurred by two different observers.
2. Chronic knee pain of mechanical origin.
3. Absence of local or general infection.
4. Hematologic and biochemical analyses with no significant alterations that contraindicate intervention.
5. Patient is able to understand the nature of the study.
6. Informed written consent provided by the patient.

#### Exclusion criteria

1. Age >75 or <18 years or legally dependent.
2. Signs of infection or positive serology for HIV, hepatitis, or syphilis.
3. Congenital or acquired diseases leading to significant knee deformities that may interfere with cell application or interpretation of results.
4. Obesity, with body mass index >30 (calculated as mass in kg/height in m<sup>2</sup>).
5. Pregnancy or breast-feeding.
6. Neoplasia.
7. Immunosuppression.
8. Intra-articular injection of any drug during the previous 3 months.
9. Participation in another clinical trial or treatment with an other investigational product within 30 days before inclusion in the study.
10. Other conditions that may, according to medical criteria, discourage participation in the study.

analysis (V3–V6), VAS for daily activity and for sports (35), WOMAC and Lequesne algofunctional indices (49), SF-36 questionnaire (50), and quantitative MRI exploration (V0, V5, and V6). Outcomes were expressed on a 0 to 100% scale in all cases.

### Cell Isolation and Expansion

Cell isolation and expansion were performed in the Instituto de Biología y Genética Molecular Cell Production Unit under GMP conditions and with approval of the Spanish Drug and Medicines Agency (PEI No. 10-134), as described previously (32). Bone marrow samples were transported to the Cell Production Unit at 4°C to 12°C within 12 hr of harvesting. The mononuclear cell fraction was isolated by density-gradient centrifugation, resuspended, and cultured in MSC expansion culture medium (51) in 175-cm<sup>2</sup> tissue culture flasks, with periodic washing to remove nonadherent cells. When cells reached 80% confluence, they were trypsinized and replated, and the process was repeated for two more passages. At the end of this period (21–24 days), cells were harvested, resuspended in Ringer's lactate solution containing 0.5% human albumin (CSL Behring GmbH, Marburg, Germany) and 5 mM glucose, and transported at 4°C to 20°C by air courier (6 hr) to Teknon Medical Centre for application. In addition to quality-control tests, viability and flow cytometric immunophenotypic profiles (34, 51) were determined at this stage.

### MRI Assessments

MRI was used to assess cartilage state by T2 mapping using the GE CartiGram sequence (37–39). Mean T2 relaxation values (ms) were sampled in 88 well-defined regions of interest (ROIs), including patellar cartilage (24 ROIs), femoral condyles (32 ROIs), and tibial condyles (32 ROIs). Instrumental variation, computed as the mean of differences between two consecutive measurements, was approximately 4%. Interobserver variation was 3%. To analyze assay results, values were averaged in each area and those above 50 ms, which represent poor quality, remodeling, inflammatory tissue (40–42), were counted to compute the PCI (expressed as percentage of all values obtained in the 88 ROIs) as described in Results. Values above 90 were not used for computations. For the PCI, 100% represents the worst possible PCI value and values at or below 5% are considered healthy.

### Statistical Analysis

Data are reported as mean±SD (or mean±SE), as indicated. The significance of differences was assessed either by Student's *t* test or by one-way analysis of variance (ANOVA) and the corresponding nonparametric tests. GraphPad Instat3 package software version 3.06 (GraphPad Software, La Jolla, CA) was used for calculations.

### ACKNOWLEDGMENTS

The authors thank Mr. Jesús Fernández (Instituto de Biología y Genética Molecular, Valladolid, Spain) and Ms. Carmen Barbero (Institut de Teràpia Regenerativa Tissular, Barcelona, Spain) for technical support, Dr. Juan Carlos Vilanova (Centro Diagnóstico por la Imagen, Girona, Spain) and Dr. Sigfried Trattning (Medical University of Vienna, Vienna, Austria) for help with T2 mapping, Dr. Xavier Peirau (traumatology consultant at Institut de Teràpia Regenerativa Tissular), and the Banc de Sang i Teixits (Barcelona, Spain) for promoting the study of chondral defect repair in the sheep model.

### REFERENCES

1. Arden N, Nevitt MC. Osteoarthritis: epidemiology. *Best Pract Res Clin Rheumatol* 2006; 20: 3.
2. Le Pen C, Reygrobelle C, Gerentes I. Financial cost of osteoarthritis in France. The "COART" France study. *Joint Bone Spine* 2005; 72: 567.
3. Hermans J, Koopmanschap MA, Bierma-Zeinstra SM, et al. Productivity costs and medical costs among working patients with knee osteoarthritis. *Arthritis Care Res (Hoboken)* 2012; 64: 853.
4. Hawker GA, Mian S, Bednis K, et al. Osteoarthritis year 2010 in review: non-pharmacologic therapy. *Osteoarthritis Cartilage* 2011; 19: 366.

5. American Academy of Orthopaedic Surgery. *Treatment of Osteoarthritis of the Knee (Non-arthroplasty). Full Guideline*. Rosemont, IL: American Academy of Orthopaedic Surgeons; 2008.
6. Hochberg MC, Altman RD, April KT, et al. American College of Rheumatology 2012 recommendations for the use of nonpharmacologic and pharmacologic therapies in osteoarthritis of the hand, hip, and knee. *Arthritis Care Res (Hoboken)* 2012; 64: 465.
7. Samson DJ, Grant MD, Ratko TA, et al. Treatment of primary and secondary osteoarthritis of the knee. *Evid Rep Technol Assess (Full Rep)* 2007; 1.
8. Pisters MF, Veenhof C, Schellevis FG, et al. Long-term effectiveness of exercise therapy in patients with osteoarthritis of the hip or knee: a randomized controlled trial comparing two different physical therapy interventions. *Osteoarthritis Cartilage* 2010; 18: 1019.
9. Rutjes AW, Juni P, da Costa BR, et al. Viscosupplementation for osteoarthritis of the knee: a systematic review and meta-analysis. *Ann Intern Med* 2012; 157: 180.
10. Sawitzke AD, Shi H, Finco MF, et al. Clinical efficacy and safety of glucosamine, chondroitin sulphate, their combination, celecoxib or placebo taken to treat osteoarthritis of the knee: 2-year results from GAIT. *Ann Rheum Dis* 2010; 69: 1459.
11. Moseley JB, O'Malley K, Petersen NJ, et al. A controlled trial of arthroscopic surgery for osteoarthritis of the knee. *N Engl J Med* 2002; 347: 81.
12. Kirkley A, Birmingham TB, Litchfield RB, et al. A randomized trial of arthroscopic surgery for osteoarthritis of the knee. *N Engl J Med* 2008; 359: 1097.
13. Manheimer E, Cheng K, Linde K, et al. Acupuncture for peripheral joint osteoarthritis. *Cochrane Database Syst Rev* 2010; CD001977.
14. Witt C, Brinkhaus B, Jena S, et al. Acupuncture in patients with osteoarthritis of the knee: a randomised trial. *Lancet* 2005; 366: 136.
15. Rutjes AW, Nuesch E, Sterchi R, et al. Therapeutic ultrasound for osteoarthritis of the knee or hip. *Cochrane Database Syst Rev* 2010; CD003132.
16. Vasiliadis HS, Wasiak J. Autologous chondrocyte implantation for full thickness articular cartilage defects of the knee. *Cochrane Database Syst Rev* 2010; CD003323.
17. Brittberg M, Lindahl A, Nilsson A, et al. Treatment of deep cartilage defects in the knee with autologous chondrocyte transplantation. *N Engl J Med* 1994; 331: 889.
18. Gupta PK, Das AK, Chullikana A, et al. Mesenchymal stem cells for cartilage repair in osteoarthritis. *Stem Cell Res Ther* 2012; 3: 25.
19. Yoo JU, Barthel TS, Nishimura K, et al. The chondrogenic potential of human bone-marrow-derived mesenchymal progenitor cells. *J Bone Joint Surg Am* 1998; 80: 1745.
20. Hwang NS, Im SG, Wu PB, et al. Chondrogenic priming adipose-mesenchymal stem cells for cartilage tissue regeneration. *Pharm Res* 2011; 28: 1395.
21. Acharya C, Adesida A, Zajac P, et al. Enhanced chondrocyte proliferation and mesenchymal stromal cells chondrogenesis in coculture pellets mediate improved cartilage formation. *J Cell Physiol* 2012; 227: 88.
22. Yang SH, Wu CC, Shih TT, et al. In vitro study on interaction between human nucleus pulposus cells and mesenchymal stem cells through paracrine stimulation. *Spine* 2008; 33: 1951.
23. Wu L, Prins HJ, Helder MN, et al. Trophic effects of mesenchymal stem cells in chondrocyte co-cultures are independent of culture conditions and cell sources. *Tissue Eng Part A* 2012; 18: 1542.
24. Matsumoto T, Okabe T, Ikawa T, et al. Articular cartilage repair with autologous bone marrow mesenchymal cells. *J Cell Physiol* 2010; 225: 291.
25. Horie M, Sekiya I, Muneta T, et al. Intra-articular injected synovial stem cells differentiate into meniscal cells directly and promote meniscal regeneration without mobilization to distant organs in rat massive meniscal defect. *Stem Cells* 2009; 27: 878.
26. Horie M, Choi H, Lee RH, et al. Intra-articular injection of human mesenchymal stem cells (MSCs) promote rat meniscal regeneration by being activated to express Indian hedgehog that enhances expression of type II collagen. *Osteoarthritis Cartilage* 2012; 20: 1197.
27. Lee KB, Hui JH, Song IC, et al. Injectable mesenchymal stem cell therapy for large cartilage defects—a porcine model. *Stem Cells* 2007; 25: 2964.
28. Sato M, Uchida K, Nakajima H, et al. Direct transplantation of mesenchymal stem cells into the knee joints of Hartley strain guinea pigs with spontaneous osteoarthritis. *Arthritis Res Ther* 2012; 14: R31.
29. Wakitani S, Imoto K, Yamamoto T, et al. Human autologous culture expanded bone marrow mesenchymal cell transplantation for repair of cartilage defects in osteoarthritic knees. *Osteoarthritis Cartilage* 2002; 10: 199.
30. Davatchi F, Abdollahi BS, Mohyeddin M, et al. Mesenchymal stem cell therapy for knee osteoarthritis. Preliminary report of four patients. *Int J Rheum Dis* 2011; 14: 211.
31. Emadedin M, Aghdami N, Taghiyar L, et al. Intra-articular injection of autologous mesenchymal stem cells in six patients with knee osteoarthritis. *Arch Iran Med* 2012; 15: 422.
32. Orozco L, Soler R, Morera C, et al. Intervertebral disc repair by autologous mesenchymal bone marrow cells: a pilot study. *Transplantation* 2011; 92: 822.
33. Kellgren JH, Lawrence JS. Radiological assessment of osteo-arthrosis. *Ann Rheum Dis* 1957; 16: 494.
34. Dominici M, Le Blanc K, Mueller I, et al. Minimal criteria for defining multipotent mesenchymal stromal cells. The International Society for Cellular Therapy position statement. *Cytotherapy* 2006; 8: 315.
35. Huskisson EC. Measurement of pain. *Lancet*. 1974; 2: 1127.
36. Hawker G, Melfi C, Paul J, et al. Comparison of a generic (SF-36) and a disease specific (WOMAC) (Western Ontario and McMaster Universities Osteoarthritis Index) instrument in the measurement of outcomes after knee replacement surgery. *J Rheumatol* 1995; 22: 1193.
37. Trattnig S, Mamisch TC, Welsch GH, et al. Quantitative T2 mapping of matrix-associated autologous chondrocyte transplantation at 3 Tesla: an in vivo cross-sectional study. *Invest Radiol* 2007; 42: 442.
38. Apprigh S, Welsch GH, Mamisch TC, et al. Detection of degenerative cartilage disease: comparison of high-resolution morphological MR and quantitative T2 mapping at 3.0 Tesla. *Osteoarthritis Cartilage* 2010; 18: 1211.
39. Crema MD, Roemer FW, Marra MD, et al. Articular cartilage in the knee: current MR imaging techniques and applications in clinical practice and research. *Radiographics* 2011; 31: 37.
40. Battaglia M, Vannini F, Buda R, et al. Arthroscopic autologous chondrocyte implantation in osteochondral lesions of the talus: mid-term T2-mapping MRI evaluation. *Knee Surg Sports Traumatol Arthrosc* 2011; 19: 1376.
41. Battaglia M, Rimondi E, Monti C, et al. Validity of T2 mapping in characterization of the regeneration tissue by bone marrow derived cell transplantation in osteochondral lesions of the ankle. *Eur J Radiol* 2011; 80: e132.
42. Giannini S, Battaglia M, Buda R, et al. Surgical treatment of osteochondral lesions of the talus by open-field autologous chondrocyte implantation: a 10-year follow-up clinical and magnetic resonance imaging T2-mapping evaluation. *Am J Sports Med* 2009; 37: 112S.
43. White LM, Sussman MS, Hurtig M, et al. Cartilage T2 assessment: differentiation of normal hyaline cartilage and reparative tissue after arthroscopic cartilage repair in equine subjects. *Radiology* 2006; 241: 407.
44. Dunn TC, Lu Y, Jin H, et al. T2 relaxation time of cartilage at MR imaging: comparison with severity of knee osteoarthritis. *Radiology* 2004; 232: 592.
45. Kim HK, Laor T, Graham TB, et al. T2 relaxation time changes in distal femoral articular cartilage in children with juvenile idiopathic arthritis: a 3-year longitudinal study. *AJR Am J Roentgenol* 2010; 195: 1021.
46. Qing C, Wei-ding C, Wei-min F. Co-culture of chondrocytes and bone marrow mesenchymal stem cells in vitro enhances the expression of cartilaginous extracellular matrix components. *Braz J Med Biol Res* 2011; 44: 303.
47. Le Blanc K, Ringden O. Immunomodulation by mesenchymal stem cells and clinical experience. *J Intern Med* 2007; 262: 509.
48. Aggarwal S, Pittenger MF. Human mesenchymal stem cells modulate allogeneic immune cell responses. *Blood* 2005; 105: 1815.
49. Faucher M, Poiraudou S, Lefevre-Colau MM, et al. Assessment of the test-retest reliability and construct validity of a modified WOMAC index in knee osteoarthritis. *Joint Bone Spine* 2004; 71: 121.
50. Kosinski M, Keller SD, Hatoum HT, et al. The SF-36 Health Survey as a generic outcome measure in clinical trials of patients with osteoarthritis and rheumatoid arthritis: tests of data quality, scaling assumptions and score reliability. *Med Care* 1999; 37: MS10.
51. Blanco JF, Graciani IF, Sanchez-Guijo FM, et al. Isolation and characterization of mesenchymal stromal cells from human degenerated nucleus pulposus: comparison with bone marrow mesenchymal stromal cells from the same subjects. *Spine* 2010; 35: 2259.

## **SUPPLEMENTAL DIGITAL CONTENT (SDC)**

### **Contents:**

#### **SUPPLEMENTARY TABLES**

- Supplementary Table S1. Antecedent history of the patients included in this trial.
- Supplementary Table S2. Minor adverse events
- Supplementary Table S3. Meta-analysis of clinical trials with different osteoarthritis treatments and comparison of their efficacies

#### **SUPPLEMENTARY FIGURES**

- Supplementary Figure S1. Effects of MSCs in horses.
- Supplementary Figure S2. Immunophenotypic characterization of MSCs.
- Supplementary Figure S3. Effects of MSC on sports activity-associated pain
- Supplementary Figure S4. T2 mapping results.



Table S1. Antecedent history of the patients included in this trial.

Pat. Num.	Sex	Age	Side	OA Grade	Previous Surgery	RHB	NSAID	Corti-coids	Hyaluronic Acid	PRP Num. (Date)	Date MSV
1	F	66	L	IV		Yes	Yes			3 (2007) 3 (2008)	2010
2	M	41	R	III	ACL+MM (1991) MCL (2004)	Yes	Yes				2010
3	M	44	R	II	MM (2009) ACL (2009)	Yes	Yes				2010
4	F	41	L	III	LM (2001)	Yes	Yes	3 (2002) 3 (2003)			2010
5	F	35	R	II	ACL (1991) MM (2001) LM(2010)	Yes	Yes				2010
6	M	33	L	II	ACL (1998) MM (2007) MM(2009)	Yes	Yes			4 (2010)	2010

<b>7</b>	M	29	R	II	ACL (2001) MM + LM (2007)	Yes	Yes	3 (2009)		2010
<b>8</b>	M	43	L	IV	LM (2001)	Yes	Yes		3 (2003) 3 (2006) 3(2007)	2010
<b>9</b>	F	39	R	III	ACL+MM (1991)	Yes	Yes	2 (2010)		2010
<b>10</b>	M	75	R	IV		Yes	Yes	3 (2005) 3 (2006)		2011
<b>11</b>	M	71	L	IV		Yes	Yes	3 (2007)	3 (2010)	2011
<b>12</b>	F	72	L	IV	OSTEOT. (2000)	Yes	Yes	2 (2007)	4 (2009) 4 (2010)	2011

OA, Osteoarthritis; RHB, Rehabilitation; NSAID, non-steroidal antiinflammatory drug; Cortic., Infiltration with corticosteroids; PRP, Platelet-rich plasma; MSV, Mesenchymal Stem Cells; ACL, Anterior cruciate ligament; MM, Medial meniscus; LM, Lateral meniscus; MCL, medial collateral ligament; OSTEOT., Osteotomy (tibial).

**Table S2. Minor adverse events**

<b>Minor adverse event (Comments)</b>	<b>Participants affected (%)</b>
Post-implantation pain at days 1-6 (E, SR)	6/12 (50%)
Articular inflammation attributable to knee overloading (E, PSR)	3/12 (25%)
Unexpected knee inflammation with synovial fluid effusion and articular swelling (UE, PSR)	3/12 (25%)
Low back pain (UE, PSR)	3/12 (25%)
Pain in the contralateral knee (UE, PSR)	1/12 (8%)
Ischiotibial tendonitis (UE, PSR)	1/12 (8%)
Arthroscopic surgery in the contralateral knee (UE, NSR)	1/12 (8%)
Dental implant (UE, NSR)	1/12 (8%)
Influenza (UE, NSR)	1/12 (8%)
Intolerance to gluten and and to lactose (UE, NSR)	1/12 (8%)

Comments: (E) Expected; (UE) Unexpected; (SR) Study-Related; (NSR) Not Study-Related; (PSR) Possibly Study-Related.

In all cases, the adverse events responded to medical/physical therapy.

Table S3. Meta-analysis of clinical trials with different osteoarthritis treatments and comparison of their efficacies.

Clinical Trial	Intervention <sup>(a)</sup>	Duration <sup>(b)</sup>	n	Basal <sup>(c)</sup>	+Treatment <sup>(c)</sup>	Improvement <sup>(d)</sup>	Impr./Basal slope <sup>(e)</sup>	Code <sup>(f)</sup>
Pisters et al., 2010 ( <a href="#">15</a> )	BGA	1 yr	55-75	43±14	31	13	0.29	1
	UC	1 yr	51-70	43±13	29	13	0.31	2
	BGA	5 yr	55-75	43±14	31	12	0.28	-
	UC	5 yr	51-70	43±13	34	8	0.19	-
Kirkley et al., 2008 ( <a href="#">13</a> )	CONT	3 m	86	43±23	34±22	9	0.20	-
	SURG	3 m	92	49±20	31±20	19	0.37	-
	CONT	2 yr	86	43±23	37±24	6	0.13	-
	SURG	2 yr	92	49±20	36±26	13	0.26	-
	CONT	1 yr	86	43±23	31±21	12	0.28	3
	SURG	1 yr	92	49±20	34±24	16	0.32	4
Witt et al., 2005 ( <a href="#">14</a> )	ACCUP	2 m	149	51±19	27±1	24	0.47	-
	SHAM	2 m	75	53±19	36±2	17	0.32	-
	ACCUP	1 yr	149	51±19	33±22	18	0.36	5

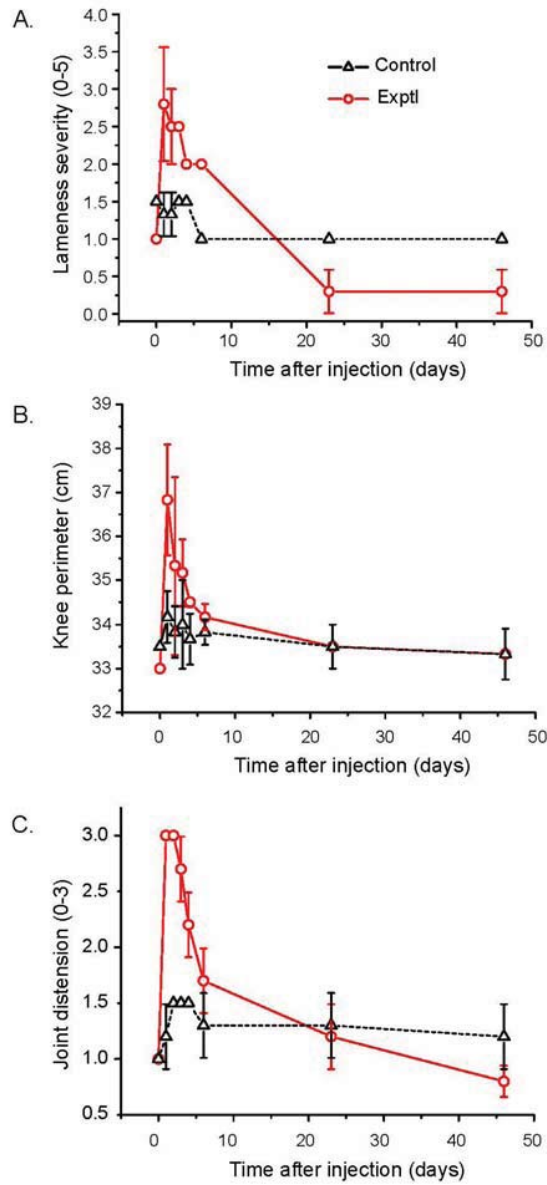
	SHAM	1 yr	75	53±19	38±23	14	0.27	6
Moseley <i>et al.</i> ,	PCB	0.5 m	59	60±19	48±24	12	0.19	-
2002 (10)	LAV	0.5 m	61	59±17	52±20	7	0.12	-
	DEBR	0.5 m	58	59±22	53±22	6	0.10	-
	PCB	2 yr	59	60±19	53±25	7	0.10	7
	LAV	2 yr	61	59±17	57±24	3	0.04	8
	DEBR	2 yr	58	59±22	54±23	5	0.09	9
This Study, 2012	MSCs	1 yr	12	24±14	6±6	18	0.78	•

<sup>(a)</sup>BGA, Behavior-Graded Activity (no drugs); UC, Usual Care (only physical; no drugs); ACCUP, acupuncture (non-steroidal anti-inflammatories as needed; compares with sham-treated); PCB, Placebo; LAV, Lavage (medical treatment as needed); DEBR, Debridement (medical treatment as needed); CONT, control; SURG, surgery (lavage plus debridement; physical and medical therapy as required); MSCs, Mesenchymal stem cells expanded from bone marrow samples in the current study shown here. The Western Ontario and McMaster Universities Arthritis

(WOMAC) index (pain component) has been used; scale 0-100. <sup>(b)</sup>Duration in years (yr) or months (m); <sup>(c)</sup>Where appropriate, mean±SD is given;

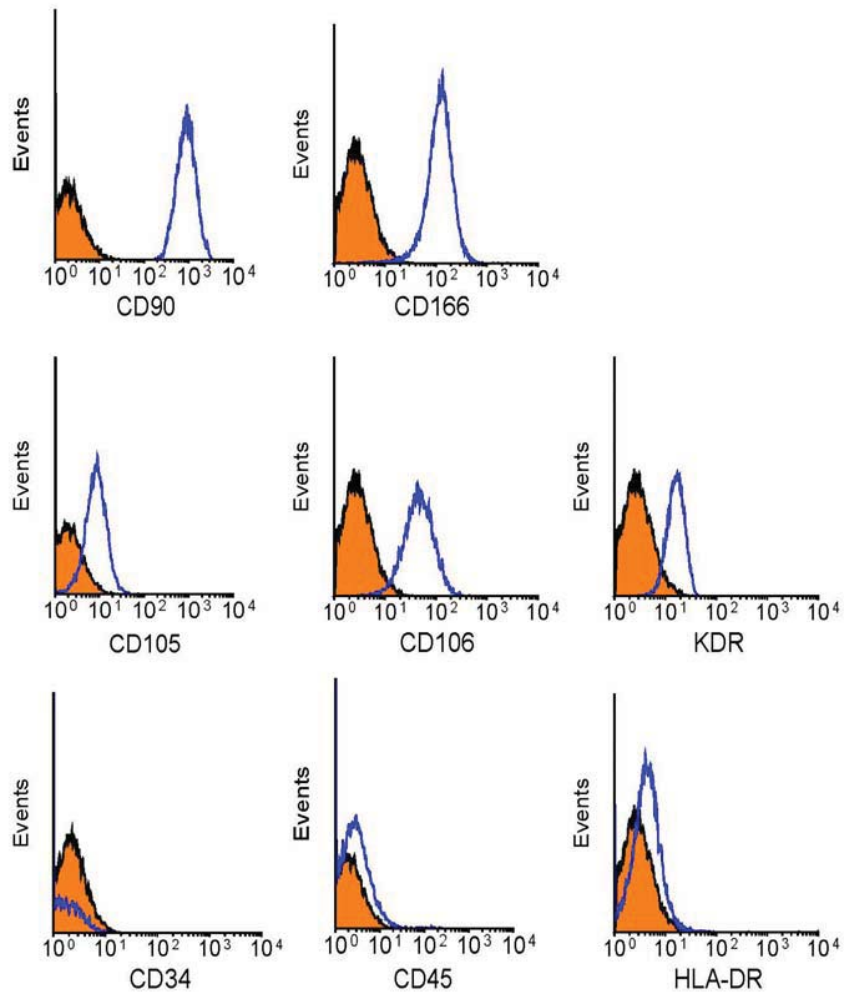
<sup>(d)</sup>Difference between “basal” and “treatment” values. <sup>(e)</sup>Impr./Basal slope, ratio improvement/basal = slope in Figure 3; <sup>(f)</sup>Code in Figure 3.

**Figure S1. Effects of MSCs in horses.**



The intended clinical protocol was first tested in three horses to assess feasibility and safety. Experiments in horses were approved by the Autonomous University of Barcelona's Animal Care and Use Committee. The tibiotarsal joint was chosen for the experiments. Limited lesions (1.5×1.5 cm laterally, and 4 mm deep, avoiding the subchondral plate) were produced in trochlea tali of both posterior legs. Autologous MSCs were prepared from

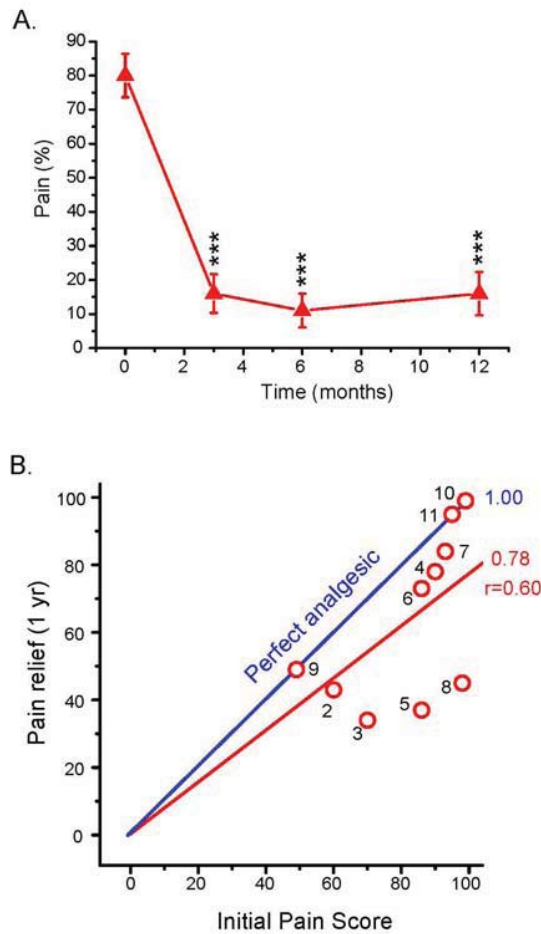
approximately 80-ml sternum bone marrow samples, which were expanded for 21 days to obtain  $50 \times 10^6$  MSCs, following the same protocol used in humans (see *Methods*). Cells were suspended in 10 ml of autologous plasma and injected intra-articularly 2 weeks after the lesion was created. A volume of 10 ml of MSC suspension was injected into one joint and 10 ml of vehicle (phosphate-buffered saline) into the contralateral joint. The follow-up period was 46 days. The horses were maintained in stalls during the first 3 days and then in a 10×10 m fenced space for 43 additional days. Clinical tests were performed at the times shown and included quantification of **(A)** lameness severity (0-5 scale), **(B)** knee diameter, and **(C)** joint distension (0-3 scale, appreciated by palpation). The values shown are the mean  $\pm$  SE of three independent experiments. The lesion produced lameness and inflammation, estimated from knee diameter and joint distension. Injection of MSCs produced considerable additional inflammation and worsened lameness during the first 1-2 days. Then symptoms declined slowly during the whole observation period with a half-time period of 6-12 days. In controls injected with saline the inflammatory peak was much smaller. By the end of the observation period, inflammation was less in the joints injected with MSCs. The necropsy, performed at the end of the 6 months period, did not reveal local nor general alterations. Overall, results supported feasibility and safety of the procedure. Our team also performed a preliminary study in 10 sheep, in which a limited lesion was generated in the femoral condyles and the internal meniscus. Five sheep were injected with 8 ml of saline as controls and the other five animals received the same solution containing  $50 \times 10^6$  autologous bone marrow MSCs. We observed clear regeneration of cartilage and the meniscus in the MSC-treated sheep at 12 months post-treatment compared to no improvement in control animals. Necropsy did not reveal other local or general alterations (unpublished results by R. Soler and L. Orozco).

**Figure S2. Immunophenotypic characterization of MSCs.**

Flow cytometric analysis of MSCs (blue) compared with isotype controls (orange). MSCs were strongly positive for CD90 and CD166; moderately positive for CD105, CD106, and KDR; and negative for CD34, CD45, and HLA-DR. Representative results are shown.



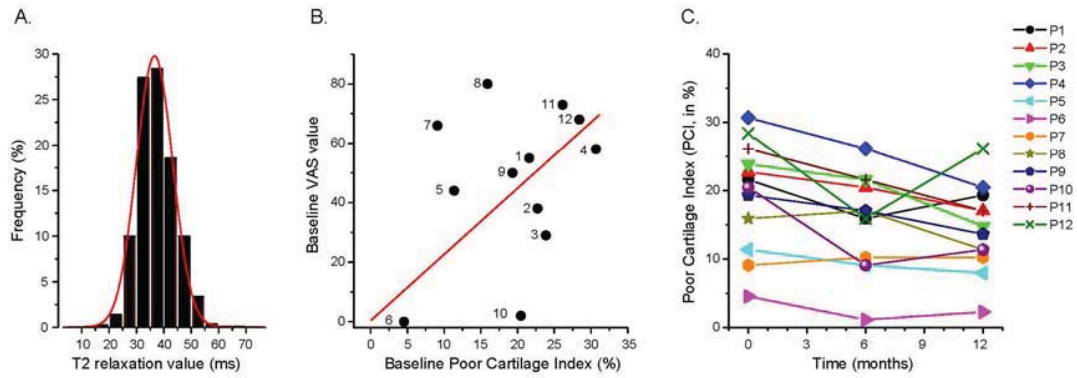
**Figure S3. Effects of MSC on sports activity-associated pain.**



**A.** Graph showing evolution of knee pain associated to sports activity, as measured by VAS (VAS-SA), over time. Mean  $\pm$  standard error (SE) values of 8 patients treated with MSC. Data from 4 patients were not included because these series were not complete. \*\*\* $p < 0.001$  (ANOVA; Bonferroni test for paired values). **B.** Correlation between improvement of knee pain 1 year after treatment with MSCs and initial pain score, as measured with VAS-SA. The “perfect” treatment (dotted line with slope of 1) is shown for comparison. The best-fitting line is shown with values for the slope and linear regression coefficient ( $r$ ) at the right. The figures besides data points are the patient codes. Patients 4 and 8 were not included because data were incomplete.

**Figure S4. T2 mapping results.**

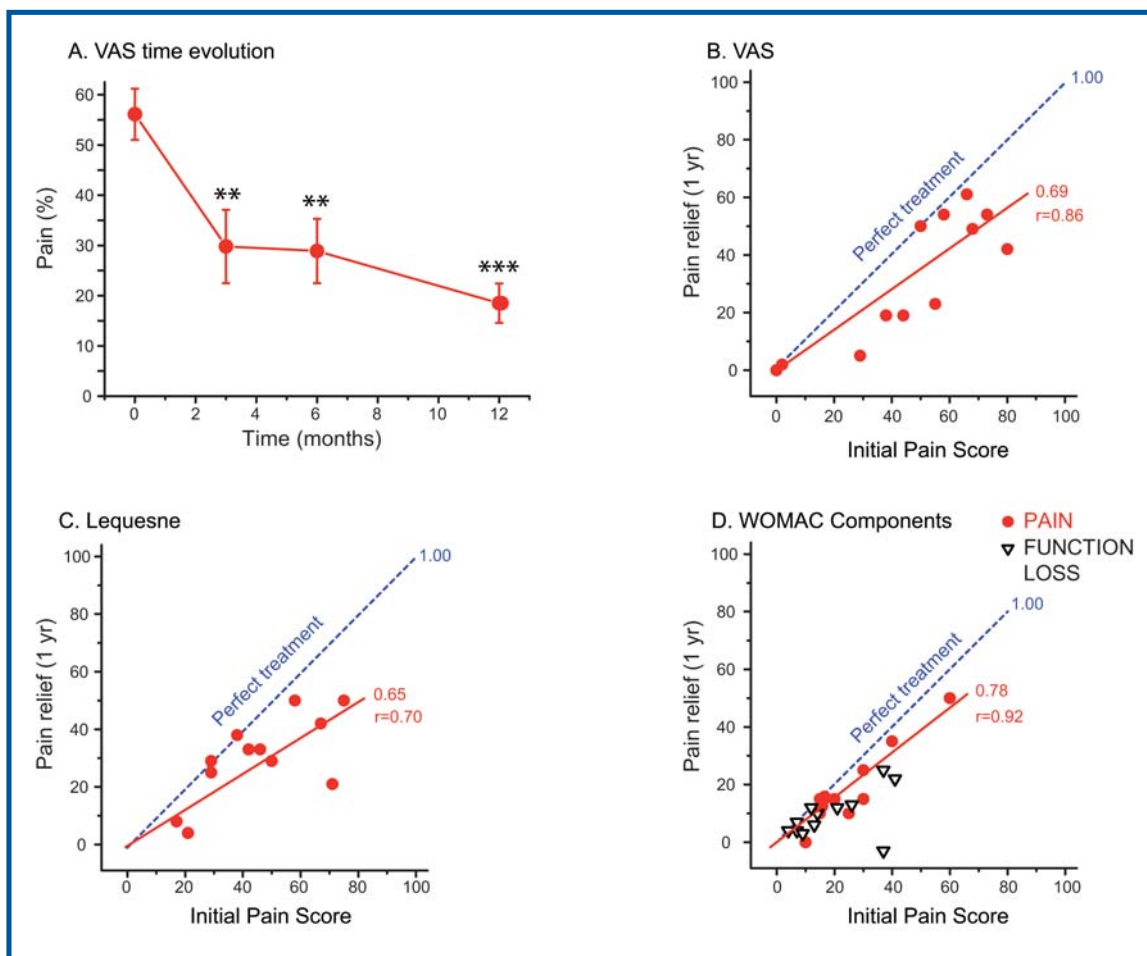
**Figure S4**



**A.** Distribution of the T2 relaxation values (ms) obtained in nine measurements in healthy individuals; 88 areas were analyzed in each knee articulation: 24 in the patella, 32 in the femoral condyles, and 32 in the tibial condyles. Mean $\pm$ SD = 39.0 $\pm$ 6.8 (n=792). Percentile 95=50; Gaussian fitting is also shown (r=0.984). **B.** Correlation between baseline values of Poor Cartilage Index (PCI) and VAS. PCI was computed as the percentage of T2 relaxation readings >50 ms. Numbers beside data points correspond to patient codes. The best-fitting line is also shown. Linear regression analysis: r=0.34; p<0.001. **C.** Temporal evolution of PCI in each individual patient. Codes as in Panel B.

# Transplantation®

THE OFFICIAL JOURNAL OF THE TRANSPLANTATION SOCIETY



## Treatment of Knee Osteoarthritis with Autologous Mesenchymal Stem Cells (pp. 1535-1541)