

## Article

# Characterization of *Leptoglossus occidentalis* Eggs and Egg Glue

Eva Sánchez-Hernández <sup>1,\*</sup>, Pablo Martín-Ramos <sup>1,\*</sup>, Jonatan Niño-Sánchez <sup>2,3</sup>, Sergio Diez-Hernando <sup>2,3</sup>, Flor Álvarez-Taboada <sup>4</sup>, Rodrigo Pérez-García <sup>2,3</sup>, Alberto Santiago-Aliste <sup>1</sup>, Jesús Martín-Gil <sup>1</sup>, and Julio Javier Diez-Casero <sup>2,3</sup>

<sup>1</sup> Department of Agricultural and Forestry Engineering, ETSIIAA, University of Valladolid, Avenida de Madrid 44, 34004 Palencia, Spain; alberto.santiago@estudiantes.uva.es (A.S.-A.); jesus.martin.gil@uva.es (J.M.-G.)

<sup>2</sup> Instituto Universitario de Investigación en Gestión Forestal Sostenible (iuFOR), Universidad de Valladolid, Avenida de Madrid 57, 34071 Palencia, Spain; jonatan.nino@uva.es (J.N.-S.); sergio.diez.hernando@uva.es (S.D.-H.); rodrigo.pg1993@gmail.com (R.P.-G.); juliojavier.diez@uva.es (J.J.D.-C.)

<sup>3</sup> Departamento de Producción Vegetal y Recursos Forestales, ETSIIAA, Universidad de Valladolid, Avenida de Madrid 57, 34071 Palencia, Spain

<sup>4</sup> School of Agrarian and Forest Engineering, DRACONES, Universidad de León, Avenida de Portugal 41, 24401 Ponferrada, Spain; flor.alvarez@unileon.es

\* Correspondence: eva.sanchez.hernandez@uva.es (E.S.-H.); pmr@uva.es (P.M.-R.)

**Simple Summary:** This study explored the chemical components of the egg glue used by the Western Conifer Seed Bug (*Leptoglossus occidentalis* Heidemann, 1910) to agglutinate eggs and adhere to pine needles. Results showed that the adhesive secretion includes plasticizers and thermoplastic elastomer resins with semiochemical properties in an oily matrix containing proteins. This knowledge of the egg glue composition can be used to develop new control strategies for *L. occidentalis*, potentially limiting the economic impact caused by this pest insect that reduces the production of pine nuts by up to 25%.

**Abstract:** The western conifer seed bug (*Leptoglossus occidentalis* Heidemann, 1910, Heteroptera: Coreidae) has a significant economic impact due to the reduction in the quality and viability of conifer seed crops; it can feed on up to 40 different species of conifers, showing a clear predilection for *Pinus pinea* L. in Europe. Its incidence is especially relevant for the pine nut-producing industry, given that the action of this pest insect can reduce the production of pine nuts by up to 25%. As part of ongoing efforts aimed at the design of control strategies for this insect, this work focuses on the characterization (by scanning electron microscopy–energy-dispersive X-ray spectroscopy, Fourier-transform infrared spectroscopy, and gas chromatography–mass spectroscopy, GC–MS) of the compounds released by these insects during oviposition, with emphasis on the adhesive secretion that holds *L. occidentalis* eggs together. Elemental analysis pointed to the presence of significant amounts of compounds with high nitrogen content. Functional groups identified by infrared spectroscopy were compatible with the presence of chitin, scleroproteins, LNSP-like and gelatin proteins, shellac wax analogs, and policosanol. Regarding the chemical species identified by GC–MS, eggs and glue hydromethanolic extracts shared constituents such as butyl citrate, dibutyl itaconate, tributyl aconitate, oleic acid, oleamide, erucamide, and palmitic acid, while eggs also showed stearic and linoleic acid-related compounds. Knowledge of this composition may allow advances in new strategies to address the problem caused by *L. occidentalis*.

**Keywords:** eggs; GC–MS; FTIR; glue; semiochemicals; SEM-EDS; oviposition; western conifer seed bug; WCSB; pine nuts; edible pine



**Citation:** Sánchez-Hernández, E.; Martín-Ramos, P.; Niño-Sánchez, J.; Diez-Hernando, S.; Álvarez-Taboada, F.; Pérez-García, R.; Santiago-Aliste, A.; Martín-Gil, J.; Diez-Casero, J.J. Characterization of *Leptoglossus occidentalis* Eggs and Egg Glue. *Insects* **2023**, *14*, 396. <https://doi.org/10.3390/insects14040396>

Academic Editors: Nickolas G. Kavallieratos, Dimitrios Avtzis and Maria C. Boukouvala

Received: 20 March 2023

Revised: 16 April 2023

Accepted: 18 April 2023

Published: 19 April 2023



**Copyright:** © 2023 by the authors. Licensee MDPI, Basel, Switzerland. This article is an open access article distributed under the terms and conditions of the Creative Commons Attribution (CC BY) license (<https://creativecommons.org/licenses/by/4.0/>).

## 1. Introduction

### 1.1. On Compounds Released by Insects

The secretions of insects and the effects that they trigger in host plants have been the subject of research since the early 2000s [1]. Some of these secretions fulfill a defensive function (e.g., osmeterial secretions), others convey specific chemical messages that modify behavior or physiology (e.g., semiochemicals), but most are involved in egg attachment.

Osmeterial-like secretions (which are odoriferous liquids secreted by epidermal glands present in the prothoracic segment of papilionid larvae when the larva feels threatened) contain monoterpene hydrocarbons, sesquiterpenic compounds, or a mixture of aliphatic acids and esters: isobutyric acid, 2-methylbutyric acid, and their methyl esters, methyl 3-hydroxybutanoate, 3-hydroxybutanoic acid,  $\alpha$ -pinene, myrcene, limonene, 2-methylpropanoic acid, 2-methylbutanoic acid, and their methyl and ethyl esters.

Semiochemicals are organic compounds used by insects to locate the potential host community (kairomones) or for attractive sexual purposes (pheromones). For example, *Phthia picta* (Drury, 1773) male-produced sex pheromone contains 5,9,17-trimethylhenicosane [2], but, in some cases, the male-released *trans*-2-hexenyl *trans*-2-hexenoate, *trans*-2-hexenyl *cis*-3-hexenoate, and myristyl isobutyrate play the double role of attractant pheromone for adults as well as aggregation pheromone.

Concerning extracts of egg clusters (such as those from *Telenomus podisi* Ashmead, 1893), previous studies showed that the major components were saturated and unsaturated fatty acids, including hexadecanoic acid, linoleic acid, and *cis*-9-octadecenoic acid [3]. In regards to egg glues, hydrogel glues proved to be rich in glycine, serine, and/or proline, and some contained substantial levels of 4-hydroxyproline [4]. Egg glue proteins (EGPs), produced by female insects, can make the eggs firmly attached to the oviposition sites. For instance, the full-length sequence and secondary structure of silkworm EGP are that of a repetitive pentapeptide motif, G-G-N/K/D-Q/E/K-Q/P, repeated 346 times, forming a hydrophilic and elastic  $\beta$ -spiral structure [5].

The most complex fluid composition an insect can produce is one that comprises four key components: an aqueous portion rich in amino acids and carbohydrates; oily nanodroplets containing hydrocarbons; an emulsifier (e.g., cholesterol, monoglycerides, etc.) to stabilize the mixture; and volatile organic compounds like kairomones or pheromones.

### 1.2. Description and Importance of *Leptoglossus occidentalis*

The western conifer seed bug, *Leptoglossus occidentalis* Heidemann (1910) (Hemiptera: Coreidae), is a pest that causes significant damage to *Pinus pinea* L. nut production (one of the most profitable non-wood forest products in several Mediterranean countries) [6,7] and to other host conifers such as *Pinus contorta* Douglas ex Loudon, *Pinus glauca* Moench, and *Pseudotsuga menziesii* (Mirb.) Franco. Both nymphs and adults feed on seeds by piercing their stylets into cones, causing conelet abortion and seed loss. Based on previously determined damage estimates for each life stage of feeding during three periods of cone development, a hypothetical density of one seed bug per tree early in the season will result in an expected seed loss of approximately 310 seeds [8]. Due to globalization, this pest has colonized almost all European countries and beyond, including marine islands, from Portugal to the south of Russia and Kazakhstan, and from Norway to the Maghreb, Turkey, Lebanon, and the Syrian Golan Heights, as well as other areas of the world such as Japan, Korea, Chile, or Uruguay [9]. The ruin of businesses by this pest has led many companies and self-employed to abandon the activity.

Phenology is dependent on weather conditions, which may vary between years. The life cycle of the western conifer seed bug in the Mediterranean area has two annual generations, with the first laying in mid-May and the second in August [10]. According to Barta [11], a single female in the field can lay up to 30 eggs during her life cycle; in laboratory observations, clutches range from 9 to 16 eggs in a row. Eggs are laid on pine needles, from which the first-instar nymphs emerge. After emergence, the newly hatched nymphs remain together on a shoot close to where the clutch is located [12]. Young nymphs

are orange and brown, turning reddish-brown as they develop [13]. Approximately 9% of them survive until adulthood [8]. *L. occidentalis* nymphs go through five instar stages, which last between one and three weeks, before transforming into the first generation of adults (mid-July). These adults lay further clutches, which give rise to the second generation of nymphs during the second half of the summer and to new adults from late August and September onward. These adults do not reproduce and overwinter in groups until the following spring [10].

Environmentally friendly management of this species is the main objective of the different research groups working with *L. occidentalis*. Recently, a new Tachinid parasitizing western conifer seed bugs was found in Portugal [14]. However, the biological control of this species is still far away. Under this scenario, the use of semiochemicals for the management of this species may be a promising strategy for the control of this pest. To the best of our knowledge, there is no effective trapping technique for *L. occidentalis*. Traps with different colors and conformations were tested, but all performed poorly to attract this bug [15], and although *L. occidentalis* males produce an aggregation pheromone to which both males and females respond [16–18], it has not yet been identified. However, important advances have been recently made by Millar et al. [19]: leptotriene (i.e., 1*S*,8*R*,*E*)-9,9-dimethyl-2-methylene-5-vinylbicyclo[6.2.0]dec-4-ene, a unique sesquiterpene hydrocarbon produced by sexually mature males of the leaf-footed bugs *Leptoglossus zonatus* (Dallas, 1852) and *L. occidentalis*, was recently described and identified by electroantennogram response.

Applications of dimethoate or carbaryl, used to control other insects, have been suggested as possible treatments for the control of conifer seed bugs. Another control option, using traps that emit infrared light wavelengths, was explored by researchers at Simon Fraser University and the British Columbia Ministry of Forests and Range [20]. The traps that achieved the best results for *L. zonatus*, a relative species of *L. occidentalis*, were green and blue, according to Franco-Archundia et al. [21], and yellow ones with a polytetrafluoroethylene (Fluon<sup>®</sup>) lubricant coating [22]. In a recent article by Inoue et al. [23], the identification of the alarm and sex pheromones from nymphs and adults of the leaf-footed bug, *L. zonatus*, was elucidated as 1-hexanol, hexanoic acid, hexyl acetate, octyl acetate, 5-ethyl-2(5H)-furanone, *cis*- $\beta$ -ocimene, *cis*-allo-ocimene, decanal,  $\alpha$ -*trans*-bergamotene, and *trans*- $\beta$ -farnesene.

### 1.3. Aim of the Study

As part of ongoing efforts aimed at the design of control strategies for the western conifer seed bug, the work presented herein attempts to: (1) characterize the egg attachment glue of *L. occidentalis*; (2) identify volatile compounds in *L. occidentalis* eggs analogous to those of *L. zonatus*; and (3) determine if any odorous volatile component of pine bark or pine nuts can be related to the unknown secretion released by *L. occidentalis*. This information may provide leads that can be developed for the control of this insect.

## 2. Material and Methods

### 2.1. Egg and Egg Glue Samples

Fresh eggs of *L. occidentalis* were used for this study. The eggs and glue samples were collected from the pine needles of 2-3-year-old potted *Pinus halepensis* Mill. saplings (provided as ovipositional substrate) at the Forest Pathology Lab at the University of Valladolid (Palencia, Spain), where the western conifer seed bugs are reproduced and maintained in cages under controlled laboratory conditions at a temperature of  $21 \pm 2$  °C, a relative humidity of  $40 \pm 10\%$ , and under daylight photoperiod. The individuals were housed in rearing boxes measuring 47.5 cm  $\times$  47.5 cm  $\times$  93 cm, with a transparent plastic front panel with two openings for manual handling and side walls made of 1 mm  $\times$  0.3 mm light polyester mesh. *Ad libitum* shelled *P. pinea* kernels were provided as food [19].

The aforementioned colony was reared from adults collected from a heavily infected *P. pinea* forest in the province of Valladolid ('El Molinillo', Tordesillas, Valladolid, Spain).

Needle removal from the potted pine saplings was carried out during the months of May and June, selecting needles with fully hatched clutches. For this purpose, the presence of an operculum due to the nymph's exit (or a color change indicating the abortion of the embryo) was checked for each egg. The selected needles were cut using scissors, placed in Petri dishes, and sealed with Parafilm.

## 2.2. Characterization

The morphology and multi-elemental composition of the egg and glue samples from the abovementioned colony reared in captivity were analyzed by scanning electron microscopy with energy-dispersive X-ray spectroscopy (SEM-EDX), using an EVO HD 25 (Carl Zeiss, Oberkochen, Germany) apparatus. Measurement conditions are indicated in each micrograph.

The infrared spectra were recorded using a Nicolet iS50 (ThermoFisher Scientific; Waltham, MA, USA) FTIR spectrometer with a diamond attenuated total reflection (ATR) module. Operative conditions were: room temperature; a 400–4000  $\text{cm}^{-1}$  range; a 0.5  $\text{cm}^{-1}$  spectral resolution; and the co-addition of 64 scans.

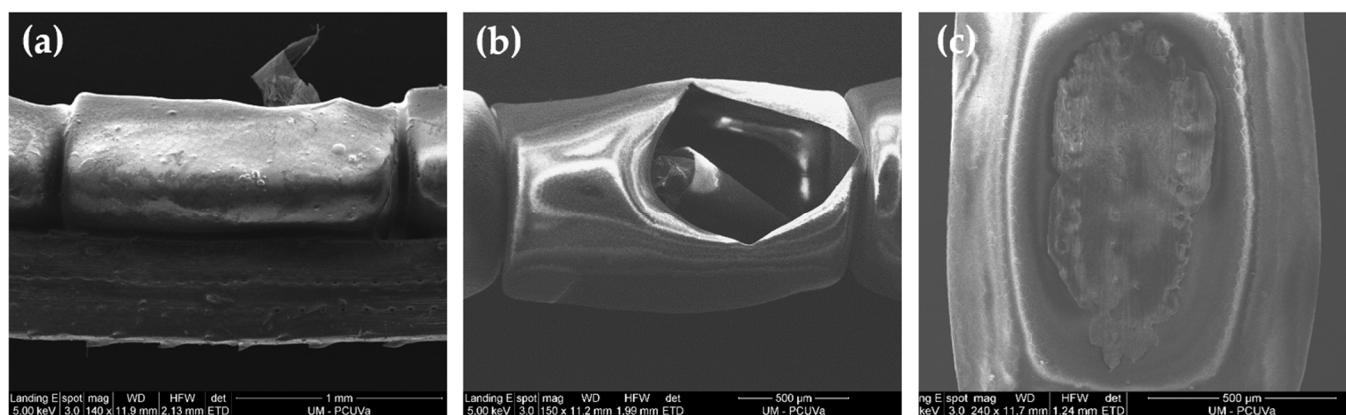
Egg/egg glue samples were mixed in a 1:20 (*w/v*) ratio with a methanol/water solution (1:1 *v/v*) and heated in a water bath at 50 °C for 30 min. The mixture was then sonicated in pulse mode for 5 min with a 1-min stop every 2.5 min, using a model UIP1000hdT probe-type ultrasonicator (Hielscher Ultrasonics; Teltow, Germany). The solution was centrifuged at 9000 rpm for 15 min, and the supernatant was filtered through Whatman No. 1 paper before being freeze-dried to obtain the solid residue. For subsequent gas chromatography-mass spectrometry (GC-MS) analysis, 25 mg of the freeze-dried extract was dissolved in 5 mL of HPLC-grade methanol (gradient grade, suitable as an ACS-grade LC reagent,  $\geq 99.9$ ; Sigma-Aldrich) to obtain a 5  $\text{mg}\cdot\text{mL}^{-1}$  solution, which was further filtered.

The GC-MS characterization was outsourced to the University of Alicante's Research Support Services (STI) and was conducted using a model 7890A gas chromatograph coupled to a model 5975C quadrupole mass spectrometer (both from Agilent Technologies; Santa Clara, CA, USA). The chromatographic conditions were as follows: 1  $\mu\text{L}$  injection volume; 280 °C injector temperature; splitless mode; 60 °C initial oven temperature, kept for 2 min, followed by a 10 °C $\cdot\text{min}^{-1}$  ramp up to a final temperature of 300 °C, maintained for 15 min. For the separation of the compounds, an Agilent Technologies HP-5MS UI chromatographic column (30 m in length, 0.250 mm in diameter, and 0.25  $\mu\text{m}$  film) was used. In regards to the mass spectrometer conditions, the temperature of the electron impact source of the mass spectrometer and the quadrupole were 230 and 150 °C, respectively, with a 70 eV ionization energy. For the identification of components, their mass spectra and retention times were compared with those of the authentic compounds and with the database of the National Institute of Standards and Technology. Siloxane-derivatives, which may arise from contamination from a variety of sources such as inlet septa, columns, valves, solvents, and vial cap seals, represented less than 0.9% of the peak area in the egg and glue sample chromatograms and were removed from the identified phytochemical lists.

## 3. Results and Discussion

### 3.1. SEM-EDS Characterization

Scanning electron micrographs of both the hemicylindrical eggs, which are laid in long chains, end to end, along the needles of the host tree [24], and the egg glue are presented in Figure 1. Figure 1a shows an intact egg, while Figure 1b shows a hatched egg. Figure 1c shows the egg glue.



**Figure 1.** Scanning electron micrographs of *L. occidentalis* eggs and egg glue: (a) an egg on a pine needle; (b) a hatched egg; (c) egg glue.

The EDS analysis results are summarized in Table 1, along with the elemental composition of several potentially related organic chemicals.

**Table 1.** EDS elemental analyses and C/N, C/O, and N/O ratios of *L. occidentalis* eggs and egg glue components, together with those of potentially associated organic chemicals.

	C	N	O	S	Si	C/N	C/O	N/O	C <sub>x</sub> N <sub>y</sub> O <sub>z</sub>
Eggs (inner surface)	56.8	25.1	18.0	-	-	2.27	3.15	1.40	C <sub>5</sub> N <sub>2</sub> O
Eggs (outer surface)	72.0	9.7	18.3	-	-	7.42	5.57	0.53	C <sub>10</sub> NO <sub>2</sub>
Eggs glue	65.5	15.0	19.5	-	-	4.36	3.36	0.77	C <sub>10</sub> N <sub>2</sub> O <sub>2</sub> or C <sub>x</sub> NO
Gelatin	50.3	17.8	25.6	-	-	2.82	1.97	0.69	C <sub>102</sub> [H <sub>151</sub> ]N <sub>31</sub> O <sub>39</sub>
Lignin	46.7	9.1	27.6	1.4	-	5.13	1.69	0.33	C <sub>18</sub> [H <sub>13</sub> ]N <sub>3</sub> O <sub>8</sub> S <sub>2</sub>
Arginine	41.4	32.2	18.4	-	-	1.28	2.25	1.75	C <sub>6</sub> [H <sub>14</sub> ]N <sub>4</sub> O <sub>2</sub>
Chitin	47.2	6.9	39.4	-	-	6.84	1.20	0.18	C <sub>6</sub> [H <sub>14</sub> ]NO <sub>5</sub>
4-Hydroxyproline	45.8	10.7	35.1	-	-	4.28	1.31	0.30	C <sub>5</sub> [H <sub>9</sub> ]NO <sub>3</sub>
Shellac	61.4	-	30.0	-	-	-	2.04	-	C <sub>30</sub> [H <sub>50</sub> ]O <sub>11</sub>
Hexadecanoic acid	75.0	-	12.5	-	-	-	6.00	-	C <sub>16</sub> [H <sub>32</sub> ]O <sub>2</sub>
Oleic acid	76.6	-	14.8	-	-	-	5.17	-	C <sub>18</sub> [H <sub>34</sub> ]O <sub>2</sub>
Pine needle	67.0	-	28.5	-	4.5	-	2.35	-	C <sub>10</sub> [H <sub>11</sub> ]O <sub>3</sub>

### 3.2. Vibrational Characterization of the Eggs and Their Glue

The absorption bands of *L. occidentalis* eggs and glue (as shown in Table 2) correspond to functional groups compatible with the components found in the cuticle (chitin and scleroproteins), Louse Nit Sheath Protein (LNSP)-like and gelatin proteins, shellac wax analogs, and related products (such as policosanol). These components are all essential for maintaining the viability of the egg, besides the adhesive function.

The prediction of protein secondary structure from FTIR spectra typically relies on the amide I–amide II region, specifically the band at approximately 1630 cm<sup>-1</sup>. The characterization of the nit sheath of the human head louse (*Pediculus humanus* subsp. *capitis* de Geer, 1778) reveals that the glue consists mainly of proteins, such as LNSP 1 and 2 [25], which predominantly contain Gly (25.4%), Glx (Glu or Gln, 24.4%), Ala (20.2%), and Val (10.0%) residues. In the amide spectral range, arginine has a strong absorption near 1673 cm<sup>-1</sup> that is assigned to  $\nu_{as}(\text{CN}_3\text{H}_5^+)$ , a less strong one near 1633 cm<sup>-1</sup> that is assigned to  $\nu_s(\text{CN}_3\text{H}_5^+)$ , and a weaker one at 1522 cm<sup>-1</sup> that is assigned to  $\delta_s(\text{CN}_3\text{H}_5^+)$ . Furthermore, the deconvoluted amide I bands are centered around 1610, 1626, 1651, and 1691 cm<sup>-1</sup>.

The band of gelatin is generally located at 1630 cm<sup>-1</sup>, and its shift to 1634 cm<sup>-1</sup> may indicate complexation, such as through the grafting of a polypeptide chain (gelatin) onto chitin. Other bands, such as those at 1445 and 1156 cm<sup>-1</sup>, appear to correspond to PAla.



Bands at 2922, 2858, 1729, 1455, 1226, 1173, 1015, and 729  $\text{cm}^{-1}$  have been previously associated with policosanol-rich insect waxes [26,27], such as shellac, and with saffron [28]. Saffron's composition includes carotenoids, safranal, and primarily lanierone (2-hydroxy-4,4,6-trimethylcyclohexa-2,5-dien-1-one), which serves as both an odorous volatile component of saffron and a pheromone emitted by the pine engraver (*Ips* spp.).

**Table 2.** Main infrared absorption bands of western conifer seed bug eggs and egg glue and possible assignments, together with bands reported in the literature (for comparison purposes).

Eggs	Egg Glue	Gum Moth Eggs Glue [4]	Sorghum Bugs Gelatin [29]	Shellac Wax [27]	Saffron [28]	Assignment
	3422 3386				3365	O-H stretching in alcohols
3270	3269		3274	3269		N-H stretching/typical of geraniol
3068	3106	3081				hydrocarbon chains in polymeric films/ =C-H stretching in aromatics
2965	2960	2953		2955		C-H methoxyl, cuticles (chitins)
2922	2918		2927	2916	2924	CH <sub>2</sub> - asymmetrical stretching, in butyl itaconate/ COCH <sub>3</sub> , in chitins/policosanol
2858	2849			2850	2854	CH <sub>2</sub> - symmetrical stretching, in policosanol and cuticles (chitins)
1729	1736			1738	1741	C=O stretching, in policosanol, fatty acids, and lipids/C=C, phorone
1634	1626	1653	1633		1653	amide I (C=O of N-acetyl group), in gelatin and chitins
	1547	1544	1542		1543	C-N stretching/amide II (N-H bend), in chitins and chitosan
1515	1472					aromatic skeletal vibrations
1455	1463 1445			1462	1462	C-H bending (scissor)/aromatic -C=C stretching, in PALa and policosanol
1385	1377	1378	1399	1374	1400 1376	-OH bending /-C-O-H in-plane bending /-CH <sub>3</sub> out-of-plane bending/CH <sub>2</sub> - wagging and twisting/in chitins
	1308				1317	CH <sub>3</sub> wagging, in amide III, proteins
1226	1245	1265		1246	1227	C-O-C chitosan/C-O polyols
	1173			1173		C(O)O policosanol
	1156	1150		1148	1157	C-O stretch in C-O-C linkages)/-C-H in chitosan and PALa
	1115			1115	1119	asymmetric in-phase ring stretching
	1073	1065	1067	1081	1075	C-H bending/C-O-C asym. stretching, in saccharide rings
1015	1028		1042	1029	1020	C-OH stretching/aromatics, phenols
	953	945		943	945	CH <sub>3</sub> wagging along the chain
		837	862			<i>trans</i> =C-H out-of-plane bending
	759 729	759		720	740	<i>cis</i> =C-H out-of-plane bending/C=C in aromatic structures

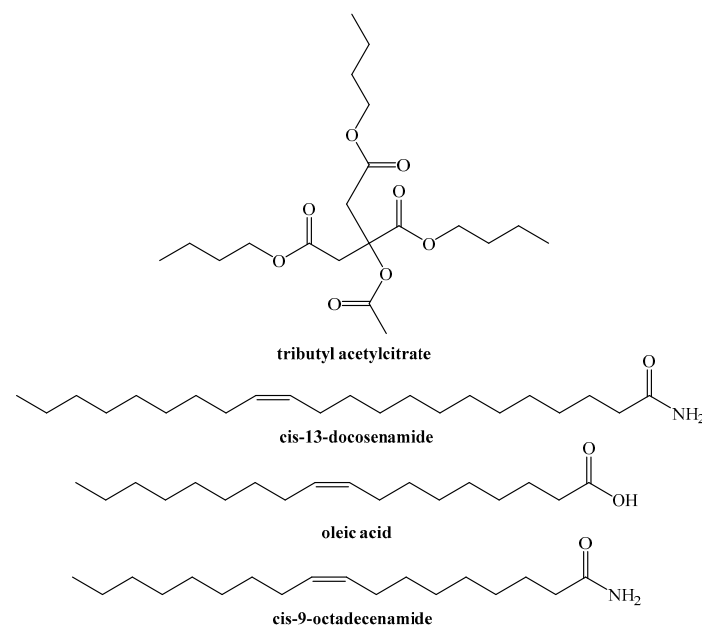
### 3.3. GC-MS Characterization of Chemical Species Present in Eggs and Their Glue

In the hydroalcoholic extracts of eggs (Figure S1), the organic compounds listed in Table S1 were identified by GC-MS. The major components were tributyl acetylcitrate (33.3%) and butyl citrate (7.3%); 9,12-octadecadienoic acid (linoleic acid) and its methyl ester (25.6%); n-hexadecanoic acid (palmitic acid) and its methyl ester (6%); 1-propene-1,2,3-tricarboxylic acid tributyl ester (tributyl aconitate) (6%); octadecanoic acid (stearic acid) (4.9%); dibutyl itaconate (3.8%); and 9-octadecenoic acid (oleic acid) methyl ester (2.7%). Additionally, secondary constituents such as 9-octadecenamide (oleamide),

*cis*-13-docosenamide (erucamide), squalene, and heptaethylene glycol were identified. Sex-specific elicitors such as nonanal, decanal, ocimene, caryophyllene, farnesene, and leptotriene [19] were not detected.

The egg glue hydroalcoholic extract was analyzed by GC-MS (Figure S2), and the organic compounds identified are listed in Table S2. Butyl citrate (61.4%) was found to be the major component, followed by heptaethylene glycol (6.5%), dibutyl itaconate (4.7%), 1-propene-tributyl aconitate (3.8%), and oleic acid (3.2%). The minor components identified were oleamide, erucamide, dianhydromanitol, squalene, adipic acid, 2-ethylhexyl isobutyl ester, and palmitic acid.

Based on the information provided, it appears that eggs and egg glue share many chemical species in common, as shown in Figure 2. These include butyl citrate, dibutyl itaconate, tributyl itaconate, oleic acid (or its methyl ester), oleamide, erucamide, squalene, palmitic acid, and heptaethylene glycol. However, eggs also contain stearic and linoleic acid-related compounds that are not present in egg glue.



**Figure 2.** Chemical species detected by GC–MS both in *L. occidentalis* eggs and egg glue.

## 4. Discussion

### 4.1. On Elemental Analysis Results

In a first approximation, if a simplified binary mixture approach is chosen and some constituents identified by other techniques are taken as a reference, the C and O data for eggs (Table 1) could be justified by, for instance, a combination of oleic acid (ca. 84%) and chitin or 4-hydroxyproline (ca. 16%). Additionally, the data from egg glue would be compatible with a tentative combination of ca. 60% gelatin and ca. 40% oleic acid or ca. 60% arginine and ca. 40% oleic acid. However, it should be noted that the actual combinations would not be binary but would involve multiple nitrogenated and non-nitrogenated constituents. In any case, apart from speculative considerations, elemental analyses demonstrated that the egg shells and egg glue contained a significant proportion of nitrogen, indicating the presence of peptides, proteins, or other compounds with high nitrogen content.

### 4.2. On Compounds Identified by GC–MS

Concerning the accuracy of the identification of the compounds, it is worth noting that methyl esters, such as hexadecanoic acid methyl ester, 9,12-octadecadienoic acid methyl ester, and 9-octadecenoic acid methyl ester, could be artifacts associated with the use of methanol as a solvent for GC–MS analyses [30].

Regarding the known functions of the chemical species identified by GC–MS (Tables S1 and S2), several of them are plasticizers. Tributyl citrate and tributyl acetyl citrate are hydrophobic plasticizers and lacquer-forming agents [31]. 1-Propene-1,2,3-tricarboxylic acid tributyl ester (tributyl aconitate) is a hydrolysis product of tributyl acetyl citrate [32], while dibutyl itaconate is used for making plasticizers, adhesives, lubricants, and gelation accelerators [33]. They all exhibit high plasticization efficiency, excellent intermiscibility, outstanding light, water, and cold resistance, low volatility, great ductility, strong weatherability, and good biodegradability. On the other hand, other organic compounds identified in *L. occidentalis* eggs and egg glue have been previously identified as semiochemicals. High levels of *cis*-13-docosenamide (an elastomer resin) were found on the surface of females of the lone star tick, *Amblyomma americanum* L. [34]. Hexadecanoic acid methyl ester is known to be attractive to female moths of *Ostrinia furnacalis* Guenée, 1854 [35], while oleic acid, the second most abundant fatty acid in pine nut oil, is a necromone across arthropod taxa [36]. Additionally, *cis*-9-octadecenamide has been reported to be an oviposition stimulant and attractive to female moths of *O. furnacalis* [35]. Concerning palmitic, oleic, and linoleic acids, they have been previously reported in extracts of egg clusters of *T. podisi* [3].

With regards to the detection of the aforementioned ‘plasticizers’, initially, reasonable doubts arose as they were generally considered non-natural products resulting from contamination. However, they were not present in black controls (ruling out contamination from the extraction and injection methods used), and in additional GC-MS analyses conducted for new samples, their presence was confirmed. Unlike other plasticizers, such as phthalate esters that may result from solvent storage in plastic containers, their presence as contaminants in extracts has not been referred to in the review paper by Venditti [30]. It should be noted that butyl-related compounds, such as isobutyric and 2-methylbutyric acids, and their methyl and ethyl esters, have been previously reported in osmeterial secretions from the swallowtail butterfly (*Papilio memnon heronus* Frunstorfer) [37] and of papilionid larvae in the genera *Luehdorfia*, *Graphium*, and *Atrophaneura* [38], thus a natural origin may be advocated. Aldrich et al. [39] reported that gypsy moth caterpillars (*Lymantria dispar* L.) secretions include biogenic amides (e.g.,  $\gamma$ -aminobutyric acid), short-chain hydroxy acids ( $\alpha$ -hydroxyisobutyric acid), and Krebs cycle acids (e.g., isocitric acid). In the compounds identified herein, apart from citric acid, other two Krebs cycle intermediates, namely aconitate and itaconate, would be involved [40], thus supporting the natural origin of butyl citrate, dibutyl itaconate, and tributyl aconitate. Regarding the possible role these compounds may play, it is reasonable to assume that they would promote adhesion to pine components such as pine needles, cones, nutshells, etc.

#### 4.3. Comparison with Pine Constituents

In their study, Liu and Xu [41] identified forty-eight volatile chemicals in pine nut shells using GC–MS, of which the following are particularly relevant:  $\alpha$ -pinene (12.4%);  $\beta$ -pinene (1.8%); oleic (33.1%), palmitic (13.6%), and stearic (7.2%) acids; 3-carene (1.5%); and 1-methyl-4-(1-methylethenyl)-(S)-cyclohexene (7.9%). Pinene was not found in *L. occidentalis* samples, but oleic and palmitic acids were detected in *L. occidentalis* eggs, egg glue, and pine nuts, and stearic acid was present in eggs and pine nuts. The presence of linoleic acid in the eggs is consistent with the findings of Kadri et al. [42], who reported a 30.7% content in *P. pinea* seeds (used as a food source in our experiments), as well as the occurrence of *cis*-oleic, linolenic, palmitic, and stearic acids. Should the composition of the ovipositional substrate (*P. halepensis* saplings) be considered instead, a recent review paper by El Omari et al. [43] on the phytochemistry of this species showed that the fatty acid profile varies depending on the analyzed plant part (e.g., seeds, cones, branches, and needles [42,44–46]), geographical provenance, and extraction procedure. However, there is general agreement that the main unsaturated fatty acids are linoleic and oleic acids, and that the main saturated fatty acid is palmitic acid, whereas stearic, succinic, azelaic, linolenic, decanoic, myristic, and arachidic acids would be minor constituents.



#### 4.4. Usefulness of the Obtained Results

The combination of reduced penetration through the eggshell (which acts as an excellent barrier to insecticides, fungal pathogens, and some fumigants) and pesticide resistance (given that eggs treated with insecticides repeatedly have been shown to produce high levels of enzymatic activity that break down insecticides) makes eggs an extremely difficult life stage to kill for both agricultural and urban pest species [47].

While the usual management strategy is to wait for the eggs to hatch and then treat the nymphs that emerge because they are easier to kill, the reported data may find application in the development of alternative management strategies, with associated advantages (e.g., avoiding reinfestation due to eggs left behind that were not killed by the treatment, the possibility of using repellants or solvents as non-toxic means of control, etc.).

Hence, based on the reported information regarding the composition of the glue (which consists of oily and proteinaceous components with plasticizers as minority constituents), other possible control strategies (besides spraying with a neonicotinoid/pyrethroid mix) may be envisaged to attack the *L. occidentalis* egg glue system. These include spraying needles with proteases dispersed in a fatty acid medium and/or hydrolyzing the plasticizers using dehydrogenases (given that, according to Bruns and Werners [48], tributyl citrate and tributyl acetyl citrate can be hydrolyzed to citric acid and butanol).

Another relevant topic for follow-up studies would be subjecting the identified material to bioassays to determine its semiochemical properties.

#### 5. Conclusions

The vibrational and GC–MS characterization results suggest that the glue system used by *L. occidentalis* females to agglutinate eggs and adhere to pine components includes plasticizers (such as butyl citrate, dibutyl itaconate, and tributyl acitonate) and thermoplastic elastomer resins with semiochemical properties (such as *cis*-13-docosenamide and *cis*-9-octadecenamide) in an oily matrix (with oleic, palmitic, and stearic acid) and proteinaceous components. Knowledge of this composition paves the way to the development of new *L. occidentalis* control strategies during the egg stage by using proteases dispersed in fatty acid media and/or dehydrogenases to attack the egg glue.

**Supplementary Materials:** The following supporting information can be downloaded at: <https://www.mdpi.com/article/10.3390/insects14040396/s1>, Figure S1: GC–MS chromatogram of *L. occidentalis* eggs; Figure S2: GC–MS chromatogram of *L. occidentalis* egg glue; Table S1: Main chemical species identified in *L. occidentalis* eggs by GC–MS; Table S2: Main chemical species identified in *L. occidentalis* egg glue by GC–MS.

**Author Contributions:** Conceptualization, P.M.-R. and J.J.D.-C.; methodology, J.M.-G. and F.Á.-T.; validation, J.N.-S., S.D.-H. and R.P.-G.; formal analysis: E.S.-H., P.M.-R., J.M.-G. and J.J.D.-C.; investigation, E.S.-H., P.M.-R., J.N.-S., S.D.-H., F.Á.-T., R.P.-G., A.S.-A., J.M.-G. and J.J.D.-C.; resources, J.J.D.-C.; writing—original draft preparation, E.S.-H., P.M.-R., J.M.-G. and J.J.D.-C.; writing—review and editing, E.S.-H., P.M.-R. and J.J.D.-C.; visualization, A.S.-A.; supervision: P.M.-R. and J.J.D.-C.; project administration, J.J.D.-C.; funding acquisition, J.J.D.-C. All authors have read and agreed to the published version of the manuscript.

**Funding:** This research was funded by LIFE project MYCORESTORE, “Innovative use of mycological resources for resilient and productive Mediterranean forests threatened by climate change”, LIFE18 CCA/ES/001110.

**Data Availability Statement:** The data presented in this study are available on request from the corresponding author.

**Acknowledgments:** To Pilar Blasco and Pablo Candela, from the Technical Research Services of the University of Alicante, for conducting the GC-MS analyses. Thanks to Laura Ponce-Herrero for providing some of the insect samples for the analyses.

**Conflicts of Interest:** The authors declare no conflict of interest. The funders had no role in the design of the study, in the collection, analysis, or interpretation of data, in the writing of the manuscript, or in the decision to publish the results.

## References

- Hilker, M.; Meiners, T. *Chemoecology of Insect Eggs and Egg Deposition*; Wiley-Blackwell: Berlin, Germany, 2003; p. 416. [\[CrossRef\]](#)
- Soldi, R.A.; Rodrigues, M.A.C.M.; Aldrich, J.R.; Zarbin, P.H.G. The male-produced sex pheromone of the true bug, *Phthia picta*, is an unusual hydrocarbon. *J. Chem. Ecol.* **2012**, *38*, 814–824. [\[CrossRef\]](#) [\[PubMed\]](#)
- Michereff, M.F.F.; Borges, M.; Aquino, M.F.S.; Laumann, R.A.; Mendes Gomes, A.C.M.; Blassioli-Moraes, M.C. The influence of volatile semiochemicals from stink bug eggs and oviposition-damaged plants on the foraging behaviour of the egg parasitoid *Telenomus podisi*. *Bull. Entomol. Res.* **2016**, *106*, 663–671. [\[CrossRef\]](#) [\[PubMed\]](#)
- Li, D.; Huson, M.G.; Graham, L.D. Proteinaceous adhesive secretions from insects, and in particular the egg attachment glue of *Opodiphthera* sp. moths. *Arch. Insect Biochem. Physiol.* **2008**, *69*, 85–105. [\[CrossRef\]](#)
- Lei, Y.; Guo, K.; Zhang, Y.; Zhang, X.; Qin, L.; Wang, X.; Zhu, H.; Guo, Y.; Yang, W.; Li, B.; et al. Adhesive property and mechanism of silkworm egg glue protein. *Acta Biomater.* **2021**, *134*, 499–512. [\[CrossRef\]](#) [\[PubMed\]](#)
- Oliveira Farinha, A.C. *Impact and Ecological Adaptation of Leptoglossus occidentalis (Hemiptera, Coreidae) on Pinus pinea*; Universidade de Lisboa: Lisbon, Portugal, 2019.
- Connelly, A.E.; Schowalter, T.D. Seed losses to feeding by *Leptoglossus occidentalis* (Heteroptera: Coreidae) during two periods of second-year cone development in western white pine. *J. Econ. Entomol.* **1991**, *84*, 215–217. [\[CrossRef\]](#)
- Bates, S.L.; Borden, J.H. Life table for *Leptoglossus occidentalis* Heidemann (Heteroptera: Coreidae) and prediction of damage in lodgepole pine seed orchards. *Agric. For. Entomol.* **2005**, *7*, 145–151. [\[CrossRef\]](#)
- Mutke, S. *Leptoglossus*, la chinche del piñón en el mundo y cómo afecta al piñón mediterráneo. *Forestalis* **2019**, *32*, 26–29.
- Ponce Herrero, L.; Domínguez Alonso, J.C. El chinche de las piñas *Leptoglossus occidentalis* Heidemann. *Rev. For.* **2020**, *79*, 90–99.
- Barta, M. Biology and temperature requirements of the invasive seed bug *Leptoglossus occidentalis* (Heteroptera: Coreidae) in Europe. *J. Pest Sci.* **2015**, *89*, 31–44. [\[CrossRef\]](#)
- Mas, H.; Naya, M.; Pérez-Laorga, E.; Aguado, A.; Marco, M.; Aragoneses, J.; Rodrigo, E. Estudio del ciclo biológico de *Leptoglossus occidentalis* Heidemann, 1910 (Hemiptera, Coreidae) en la Comunitat Valenciana. In Proceedings of the 6th Spanish Forest Congress, Vitoria, Spain, 10–14 June 2013; pp. 10–14.
- Bernardinelli, I.; Zandigiacomo, P. *Leptoglossus occidentalis* Heidemann (Heteroptera, Coreidae): A conifer seed bug recently found in northern Italy. *J. For. Sci.* **2001**, *47*, 56–58.
- Naves, P.; Nóbrega, F.; de Sousa, E. An adult *Leptoglossus occidentalis* (Heteroptera: Coreidae) parasitized in Portugal by the native Tachinid fly *Elomya lateralis* (Diptera: Tachinidae). *Ann. Soc. Entomol. Fr. (N.S.)* **2022**, *58*, 287–291. [\[CrossRef\]](#)
- Strong, W. *BC Cone and Seed Pest Research Program*; Research and Knowledge Management Branch Seminar Series; Ministry of Forests and Range: Vernon, BC, Canada, 2010.
- Blatt, S. An unusually large aggregation of the western conifer seed bug, *Leptoglossus occidentalis* (Hemiptera: Coreidae), in a man-made structure. *J. Entomol. Soc. B. C.* **1994**, *91*, 71–72.
- Blatt, S.E.; Borden, J.H. Evidence for a male-produced aggregation pheromone in the western conifer seed bug, *Leptoglossus occidentalis* Heidemann (Hemiptera: Coreidae). *Can. Entomol.* **1996**, *128*, 777–778. [\[CrossRef\]](#)
- Blatt, S.E.; Borden, J.H.; Pierce, J.H.D.; Gries, R.; Gries, G. Alarm pheromone system of the western conifer seed bug, *Leptoglossus occidentalis*. *J. Chem. Ecol.* **1998**, *24*, 1013–1031. [\[CrossRef\]](#)
- Millar, J.G.; Zou, Y.; Hall, D.R.; Halloran, S.; Pajares, J.A.; Ponce-Herrero, L.; Shates, T.; Wilson, H.; Daane, K.M. Identification and synthesis of Leptotriene, a unique sesquiterpene hydrocarbon from males of the leaf-footed bugs *Leptoglossus zonatus* and *L. occidentalis*. *J. Nat. Prod.* **2022**, *85*, 2062–2070. [\[CrossRef\]](#)
- Takács, S.; Bottomley, H.; Andreller, I.; Zaradnik, T.; Schwarz, J.; Bennett, R.; Strong, W.; Gries, G. Infrared radiation from hot cones on cool conifers attracts seed-feeding insects. *Proc. R. Soc. B Biol. Sci.* **2008**, *276*, 649–655. [\[CrossRef\]](#)
- Franco-Archundia, S.; Gonzaga-Segura, A.; Jiménez-Pérez, A.; Castrejón-Gómez, V. Behavioral response of *Leptoglossus zonatus* (Heteroptera: Coreidae) to stimuli based on colors and its aggregation pheromone. *Insects* **2018**, *9*, 91. [\[CrossRef\]](#)
- Wilson, H.; Maccaro, J.; Daane, K. Optimizing trap characteristics to monitor the leaf-footed bug *Leptoglossus zonatus* (Heteroptera: Coreidae) in orchards. *Insects* **2020**, *11*, 358. [\[CrossRef\]](#)
- Inoue, K.; Vidal, D.; Saad, E.; Martins, C.; Zarbin, P. Identification of the alarm and sex pheromones of the leaf-footed bug, *Leptoglossus zonatus* (Heteroptera: Coreidae). *J. Braz. Chem. Soc.* **2018**, *30*, 939–947. [\[CrossRef\]](#)
- Mitchell, P.L. Leaf-footed bugs (Coreidae). In *Heteroptera of Economic Importance*; Schaefer, C.W., Panizzi, A.R., Eds.; CRC Press: Boca Raton, FL, USA, 2000; pp. 337–403. [\[CrossRef\]](#)
- Kim, J.H.; Lee, D.E.; Park, S.; Clark, J.M.; Lee, S.H. Characterization of nit sheath protein functions and transglutaminase-mediated cross-linking in the human head louse, *Pediculus humanus capitis*. *Parasites Vectors* **2021**, *14*, 425. [\[CrossRef\]](#)
- Ma, J.; Ma, L.; Zhang, H.; Zhang, Z.; Wang, Y.; Li, K.; Chen, X. Policosanol fabrication from insect wax and optimization by response surface methodology. *PLoS ONE* **2018**, *13*, e0197343. [\[CrossRef\]](#)
- Yan, G.; Cao, Z.; Devine, D.; Penning, M.; Gately, N.M. Physical properties of shellac material used for hot melt extrusion with potential application in the pharmaceutical industry. *Polymers* **2021**, *13*, 3723. [\[CrossRef\]](#)

28. Andronie, L.; Coroian, A.; Miresan, V.; Pop, I.; Raducu, C.; Rotaru, A.; Olar, L. Results obtained by investigating saffron using FT-IR spectroscopy. *Bull. Univ. Agric. Sci. Vet. Med. Cluj-Napoca Anim. Sci. Biotechnol.* **2016**, *73*, 238. [[CrossRef](#)] [[PubMed](#)]
29. Mariod, A.A.; Fadul, H. Extraction and characterization of gelatin from two edible Sudanese insects and its applications in ice cream making. *Food Sci. Technol. Int.* **2015**, *21*, 380–391. [[CrossRef](#)] [[PubMed](#)]
30. Venditti, A. What is and what should never be: Artifacts, improbable phytochemicals, contaminants and natural products. *Nat. Prod. Res.* **2018**, *34*, 1014–1031. [[CrossRef](#)] [[PubMed](#)]
31. Chaos, A.; Sangroniz, A.; Gonzalez, A.; Iriarte, M.; Sarasua, J.-R.; del Río, J.; Etxeberria, A. Tributyl citrate as an effective plasticizer for biodegradable polymers: Effect of plasticizer on free volume and transport and mechanical properties. *Polym. Int.* **2019**, *68*, 125–133. [[CrossRef](#)]
32. Tsochatzis, E.D.; Alberto Lopes, J.; Hoekstra, E.; Emons, H. Development and validation of a multi-analyte GC-MS method for the determination of 84 substances from plastic food contact materials. *Anal. Bioanal. Chem.* **2020**, *412*, 5419–5434. [[CrossRef](#)]
33. Yu, Y.; Wang, S.; Yang, Z.; Wang, F.; Deng, L. A novel environment-friendly synthetic technology of dibutyl itaconate. *J. Chem. Technol. Biotechnol.* **2020**, *95*, 2879–2885. [[CrossRef](#)]
34. Renthall, R.; Lohmeyer, K.; Borges, L.M.F.; Pérez de León, A.A. Surface lipidome of the lone star tick, *Amblyomma americanum*, provides leads on semiochemicals and lipid metabolism. *Ticks Tick-Borne Dis.* **2019**, *10*, 138–145. [[CrossRef](#)]
35. Jiang, X.-C.; Wen-Xia, D.; Chen, B.; Xiao, C.; Gui, F.-R.; Nai-Sheng, Y.A.N.; Qian, L.; Li, Z.-Y. Electrophysiological and oviposition responses of Asian corn borer, *Ostrinia furnacalis* (Lepidoptera: Crambidae), to compounds rinsed from the surfaces of sugarcane and maize leaves. *Eur. J. Entomol.* **2015**, *112*, 295–301. [[CrossRef](#)]
36. McAfee, A.; Chapman, A.; Iovinella, I.; Gallagher-Kurtzke, Y.; Collins, T.F.; Higo, H.; Madilao, L.L.; Pelosi, P.; Foster, L.J. A death pheromone, oleic acid, triggers hygienic behavior in honey bees (*Apis mellifera* L.). *Sci. Rep.* **2018**, *8*, 5719. [[CrossRef](#)]
37. Chow, Y.S.; Tsai, R.S. Protective chemicals in caterpillar survival. *Experientia* **1989**, *45*, 390–392. [[CrossRef](#)]
38. Honda, K. Osmeterial secretions of papilionid larvae in the genera *Luehdorfia*, *Graphium* and *Atrophaneura* (Lepidoptera). *Insect Biochem.* **1980**, *10*, 583–588. [[CrossRef](#)]
39. Aldrich, J.R.; Schaefer, P.W.; Oliver, J.E.; Puapoomchareon, P.; Lee, C.-J.; Meer, R.K.V. Biochemistry of the exocrine secretion from gypsy moth caterpillars (Lepidoptera: Lymantriidae). *Ann. Entomol. Soc. Am.* **1997**, *90*, 75–82. [[CrossRef](#)]
40. Murphy, M.P.; O'Neill, L.A.J. Krebs cycle reimaged: The emerging roles of succinate and itaconate as signal transducers. *Cell* **2018**, *174*, 780–784. [[CrossRef](#)] [[PubMed](#)]
41. Liu, R.; Xu, B. Characterization of essential oil in pine nut shells from commodity waste in China by steam distillation and GC-MS. *Food Anal. Methods* **2011**, *5*, 435–440. [[CrossRef](#)]
42. Kadri, N.; Khettal, B.; Aid, Y.; Kherfellah, S.; Sobhi, W.; Barragan-Montero, V. Some physicochemical characteristics of pinus (*Pinus halepensis* Mill., *Pinus pinea* L., *Pinus pinaster* and *Pinus canariensis*) seeds from North Algeria, their lipid profiles and volatile contents. *Food Chem.* **2015**, *188*, 184–192. [[CrossRef](#)] [[PubMed](#)]
43. El Omari, N.; Ezzahrae Guaouguaou, F.; El Menyiy, N.; Benali, T.; Aanniz, T.; Chamkhi, I.; Balahbib, A.; Taha, D.; Shariati, M.A.; Zengin, G.; et al. Phytochemical and biological activities of *Pinus halepensis* mill., and their ethnomedicinal use. *J. Ethnopharmacol.* **2021**, *268*, 113661. [[CrossRef](#)]
44. Mohamed, A.A.; Behiry, S.I.; Ali, H.M.; El-Hefny, M.; Salem, M.Z.M.; Ashmawy, N.A. Phytochemical compounds of branches from *P. halepensis* oily liquid extract and *S. terebinthifolius* essential oil and their potential antifungal activity. *Processes* **2020**, *8*, 330. [[CrossRef](#)]
45. Dhibi, M.; Mechri, B.; Brahmi, F.; Skhiri, F.; Alsaif, M.A.; Hammami, M. Fatty acid profiles, antioxidant compounds and antiradical properties of *Pinus halepensis* Mill. cones and seeds. *J. Sci. Food Agric.* **2012**, *92*, 1702–1708. [[CrossRef](#)]
46. Anttonen, S.; Herranen, J.; Peura, P.; Kärenlampi, L. Fatty acids and ultrastructure of ozone-exposed Aleppo pine (*Pinus halepensis* Mill.) needles. *Environ. Pollut.* **1995**, *87*, 235–242. [[CrossRef](#)] [[PubMed](#)]
47. Campbell, B.E.; Pereira, R.M.; Koehler, P.G. Complications with controlling insect eggs. In *Insecticides Resistance*; Trdan, S., Ed.; InTechOpen: London, UK, 2016; pp. 83–96. [[CrossRef](#)]
48. Bruns, F.H.; Werners, P.H. Dehydrogenases: Glucose-6-phosphate dehydrogenase, 6-phosphogluconate dehydrogenase, glutathione reductase, methemoglobin reductase, polyol dehydrogenases. In *Advances in Clinical Chemistry*; Elsevier: Amsterdam, The Netherlands, 1963; Volume 5, pp. 237–294. [[CrossRef](#)]

**Disclaimer/Publisher's Note:** The statements, opinions and data contained in all publications are solely those of the individual author(s) and contributor(s) and not of MDPI and/or the editor(s). MDPI and/or the editor(s) disclaim responsibility for any injury to people or property resulting from any ideas, methods, instructions or products referred to in the content.